

## PRODUCT DATA SHEET

January, 2007

## YARDNEY 3-POD SAND FILTER SYSTEM (IL4824-3AS)

### GENERAL INFORMATION

Skid mounted high rate automatic backwashing sand media filter [3 tanks (pods)] designed for general-purpose water filtration of organic and inorganic solids. Powered by 120 V external power supply.

### WEIGHTS AND MEASURES

» Capacity:	285 – 565 gpm (Normal flow range) 756 gpm (Peak flow)
» Design Pressure:	80 psi maximum
» Temperature:	Limit to ambient. Consult BakerCorp if temperature exceeds 100 degrees.
» Filtration:	Down to 50 microns
» Height:	7'-7" (overall)
» Width:	5'-0"
» Length:	15'-3" (overall); 13'-11" (skid)
» Weight:	3,950 lbs. – equipment only 7,365 lbs. – media only 16,700 lbs. – operational
» Backflush:	240 gpm, automatic

### OPERATING REQUIREMENTS

» Compressed Air:	5 cfm minimum at 60 psi
» Sand Media:	Crushed silica, 0.47MM (#80 grit); 21 cu. ft. per vessel
» Gravel Media:	#3 crushed rock, ½" x ¾"; 7 cu. ft. per vessel
» Input Power:	120 V AC (customer supplied)

### FEATURES

» System Controller:	Automatic Filter Controller. Flush activation based on elapsed time and/or pressure differential.
» Piping:	Inlet & outlet pipe is 6" A53B, 3/16" wall; weld fittings are A234; flanges are A106. Backflush piping is 4" schedule 40 PVC.

### FEATURES – con't

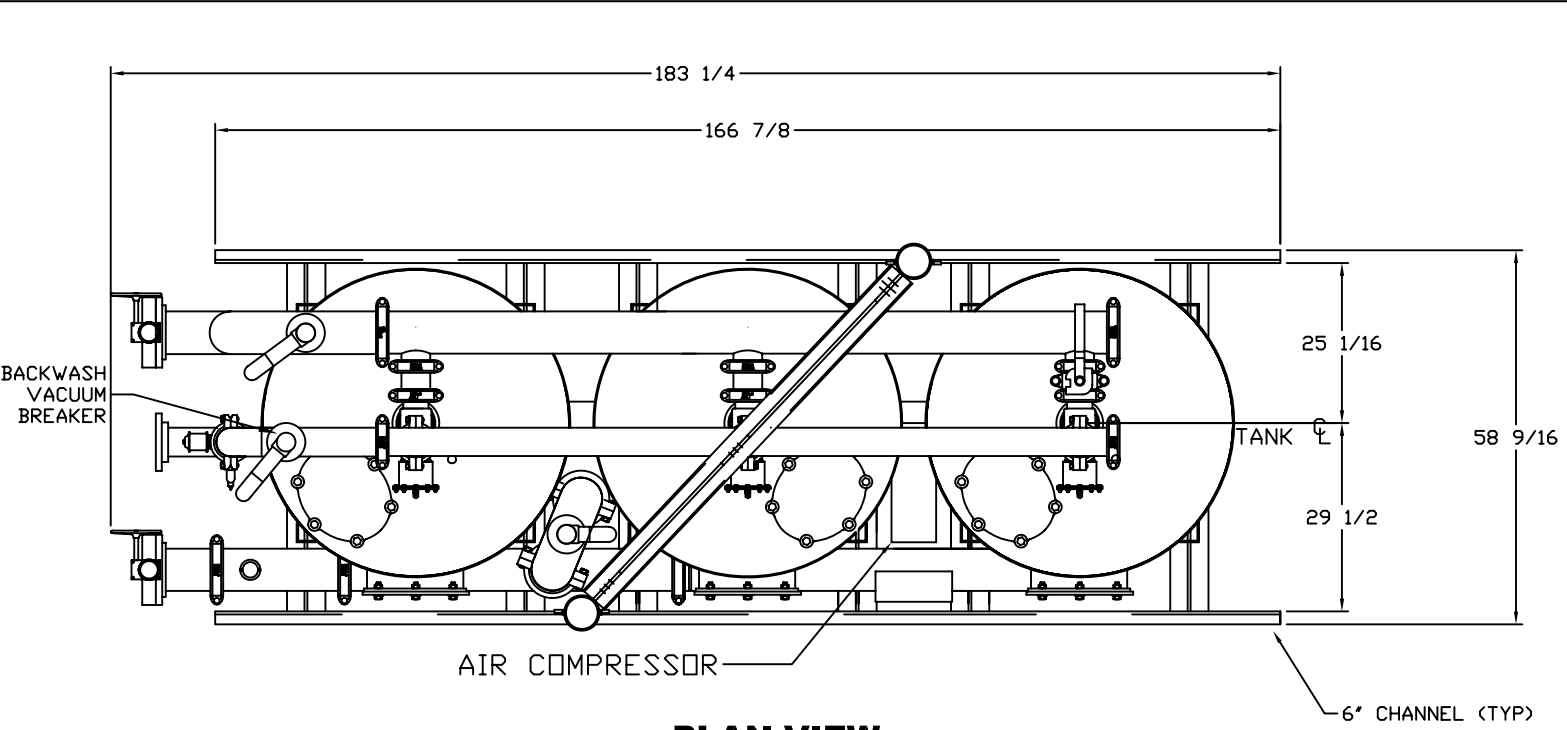
» Press. Gauge:	2" face, ¼" NPT bottom connection, stainless steel case, plexiglass lens, brass bourdon tube, 0-100 psi range.
» Flowmeter:	Six-inch propeller type meter, AWWA C704-92 compliant. Instantaneous flowrate indicator and six-digit totalizer. Accuracy is ±2% of reading. Repeatability of 0.25%. Rated at 90-1200 gpm, 150 psi, 160°F. Tube: epoxy-coated carbon steel; Impeller: high-impact plastic.
» Butterfly Valves:	<u>Effluent / Inluent:</u> 6" with cast iron body (epoxy coated), EPDM seat, 304 SS stem and aluminum bronze disc. <u>Tank Isolation:</u> 4", grooved ends, EPDM disc coating
» Differential Pressure Switch:	0-30 psid. Two-inch dial, plated steel case, ±3% accuracy.
» Air / Vacuum Release Valve:	2" mounted on backwash, influent and effluent lines
» Tubing:	Pressurized – ¼" 304 ss w/ Hoke fittings; Drain - ¼" polypropylene; Vent – schedule 80 PVC

### SURFACE DETAILS

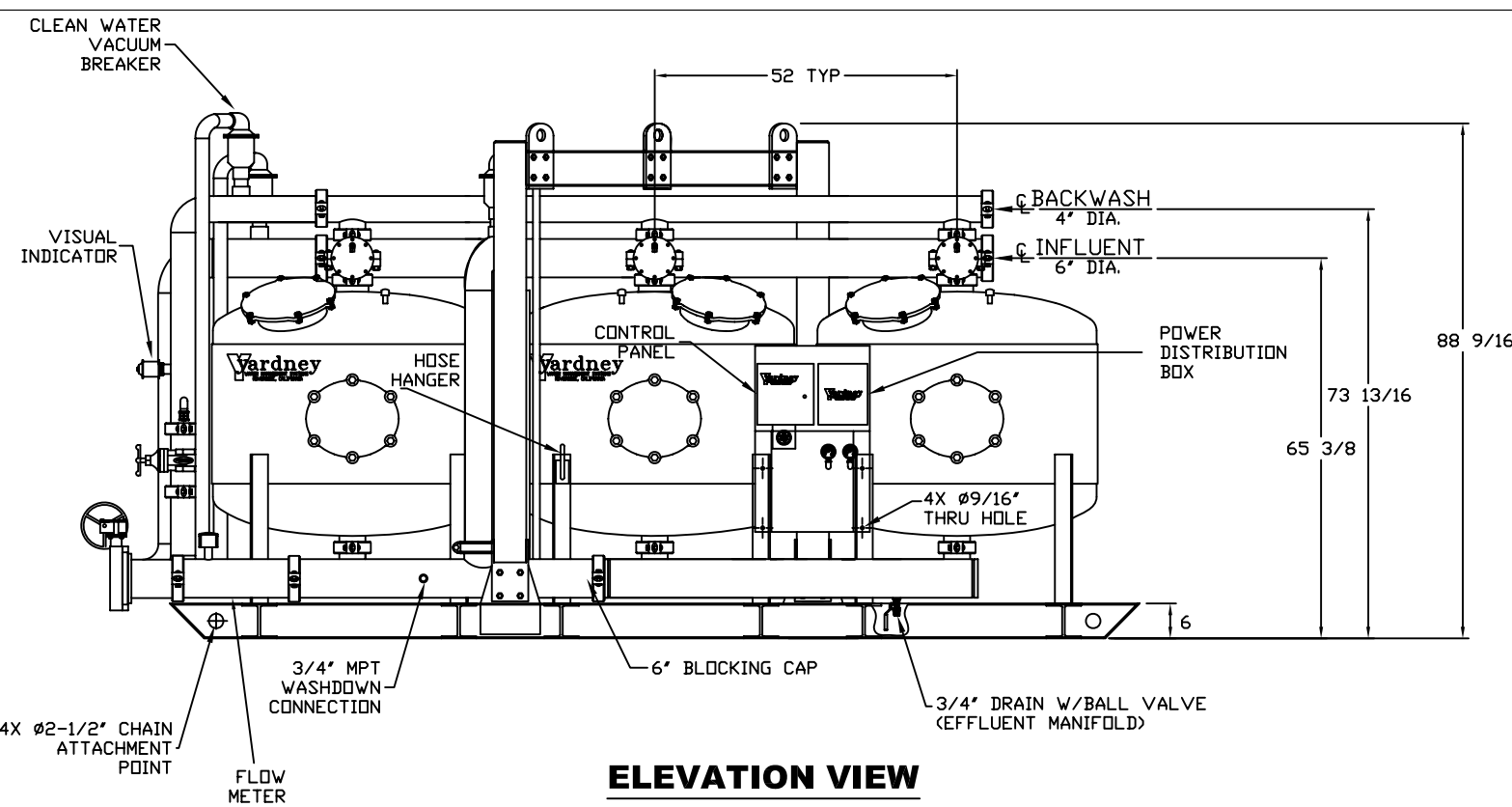
» Interior Coating:	3M Scotchkote 134
» Exterior Coating:	High Gloss Polyurethane

### TESTS/CERTIFICATIONS

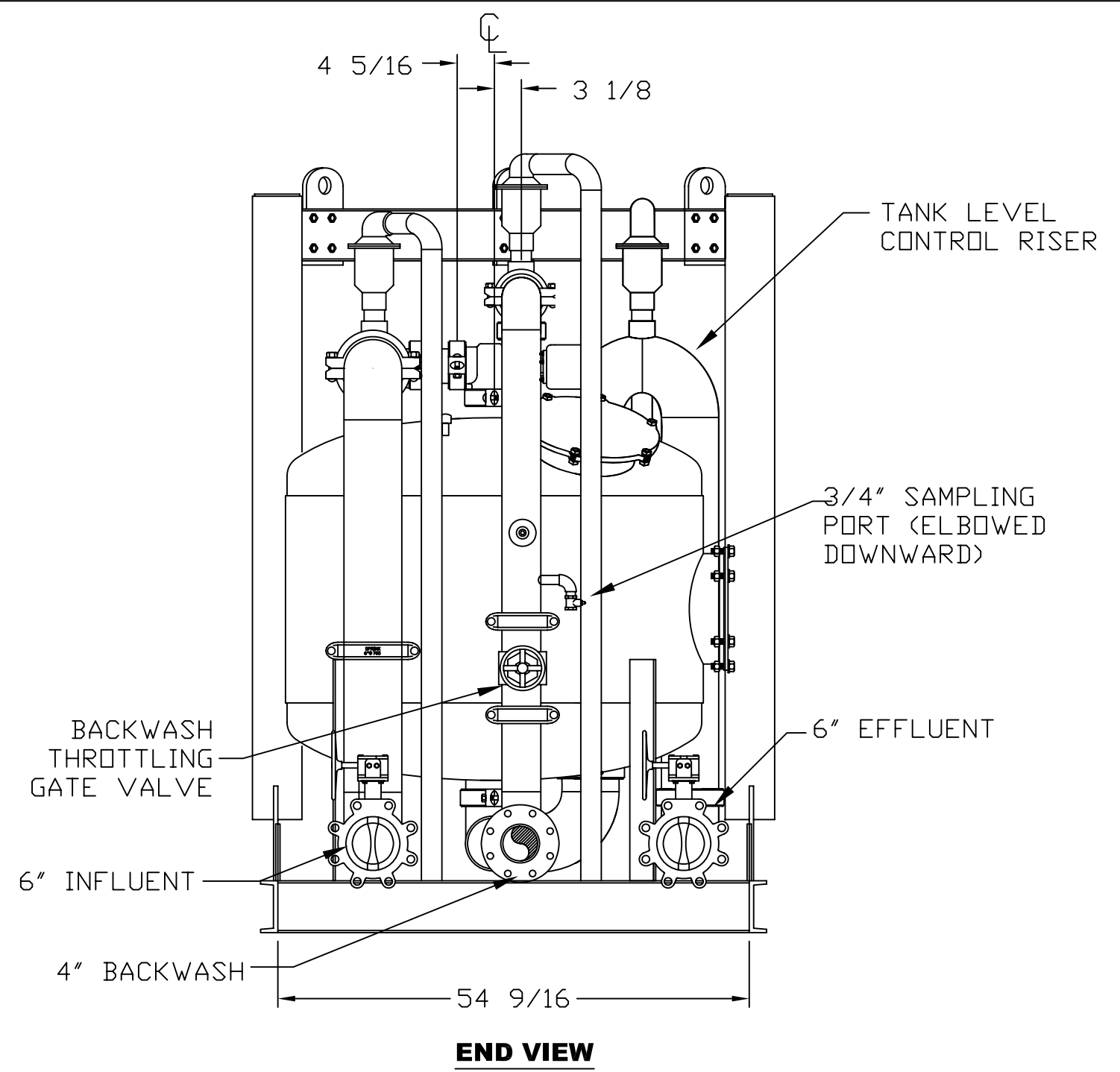
» Tests Performed:	OEM pressure tested. BakerCorp performs scheduled QMS inspections.
--------------------	--



**PLAN VIEW**



**ELEVATION VIEW**



**END VIEW**

The information contained herein is proprietary to BakerCorp and shall not be reproduced or disclosed in whole or in part, or used for any design or manufacture except when user obtains direct written authorization from BakerCorp.

**BAKERCORP™** 3020 OLD RANCH PARKWAY  
SEAL BEACH, CA 90740-2751

G				SCALE: Varies w/ view	SIZE <b>B</b>	ORIGINAL DWG. DATE 06AUG04
F						
E				DRAWN BY: P.J.B.	APPROVED BY: -	CAT/CLASS --
D						
C	fixed a few lines that were missing	7/12/05	Z.E.R.	TITLE YARDNEY MODEL IL 4824-3AS SAND FILTER w/AIR COMPRESSOR		SHEET 1 OF 1
B	Increased font size of Specifications to improve readability	3/16/05	P.J.B.	DRAWING NO. <b>S-9-M0015-1-</b>		REV. <b>C</b>
A	This drawing is a revision of S-9-M0014-1	8/6/04	P.J.B.			
REV.	DESCRIPTION	DATE	BY			

**NOTES:**  
1. This drawing is a baseline representation for this model filter. Variations between this drawing and the actual equipment in the field may exist. Consult your local BakerCorp representative if specific needs exist.

**SPECIFICATIONS**

1. FLOW RATE DESIGN - 285 - 565 GPM
2. MAXIMUM WORKING PRESSURE - 80 PSI
3. ELECTRICAL:
  - CONTROLLER 120V, 1A
  - COMPRESSOR 120V, 5A
  - SOLENOIDS 12VDC
4. MEDIA REQUIREMENTS PER TANK:
  - A. 1/2"x3/4" CRUSHED ROCK - 7.0 CU. FT.
  - B. 0.47mm CRUSHED SILICA SAND - 21.0 CU. FT.
5. WEIGHT: (APPROX.)
  - SHIPPING - 3,950 LBS. (LESS MEDIA)
  - MEDIA - 7,365 LBS.
  - OPERATIONS - 16,700 LBS.
6. BACKWASH RATE: 15 GPM/FT^2 - 190 GPM
7. PNEUMATICALLY ACTUATED VALVES W/SS TUBING.
8. STEEL CONDUIT
9. TUBE TANK VENT VALVES TO GROUND.