

PRODUCT DATA SHEET

January, 2007

450 BBL FIXED AXLE (WADE SINGLE WALL)

GENERAL INFORMATION

This tank has a smooth interior wall and round bottom for easy cleaning.

WEIGHTS AND MEASURES

» Capacity:	450 BBL (18,900 gal.)
» Height:	9'-7" (grade to top of tank roof steel) 13'-1" (grade to handrails in upright position)
» Width:	8'-0"
» Length:	47'-8" (overall) 42'-11" (tank only)
» Weight:	25,600 lbs.

STRUCTURAL DESIGN

» Floor:	1/4" ASTM A36 carbon steel
» Sides/Ends:	1/4" ASTM A36 carbon steel
» Roof Deck:	1/4" ASTM A36 carbon steel
» Wall / Roof Frame:	5 1/4" x 3 1/4" formed channel (steel)

FEATURES

» Valves:	(2) Front & (1) Rear: 4" wafer butterfly valve, Buna-N; (1) 8" wafer butterfly valve on manifold connection.
» Relief Valve:	16 oz./in ² pressure setting, 0.4 oz./in ² vacuum setting; Buna-N seal
» Manifold:	Some are equipped with 8" incl. (4) 3" threaded collars, plugged & chained
» Fill Line:	3" stub at rear, top, driver side
» Overflow:	3" collar on front & rear walls

FEATURES – cont.

» Drains:	Two (2) – 4" at center of tank, front/rear
» Misc. Piping Connections:	One (1) – 4" top vent (blinded)
» Manways:	Three (3) – 22" round manways on front, side & top, made of flat 1/2" flat plate with 5/8" bolts and nuts.
» Manway Seals:	1/2" x 1/2" square Buna-N spliced ring
» Walkway:	None
» Stairway:	At rear of tank with OSHA handrail
» Guardrails:	Self locking, 1 1/4" square tubing on top of tank
» Internal Ladder:	None
» Level Gauge:	Ball float style, 2-8" 304 SS floats
» Tires:	1 1R x 22.5

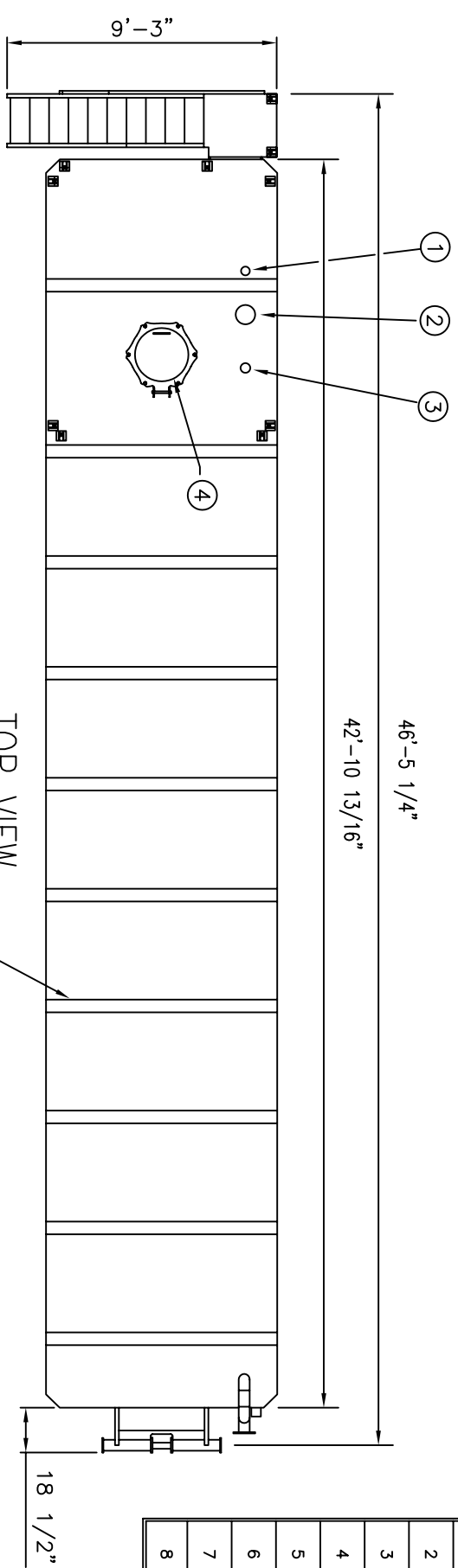
SURFACE DETAILS

» Exterior Coating:	High gloss polyurethane
» Interior Coating:	Chemical resistant lining
» Safety Paint:	On stairs, handrails, top safety rails and top hatches

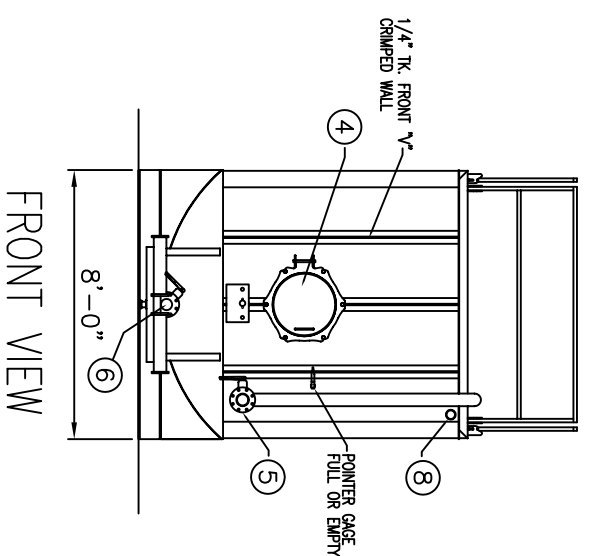
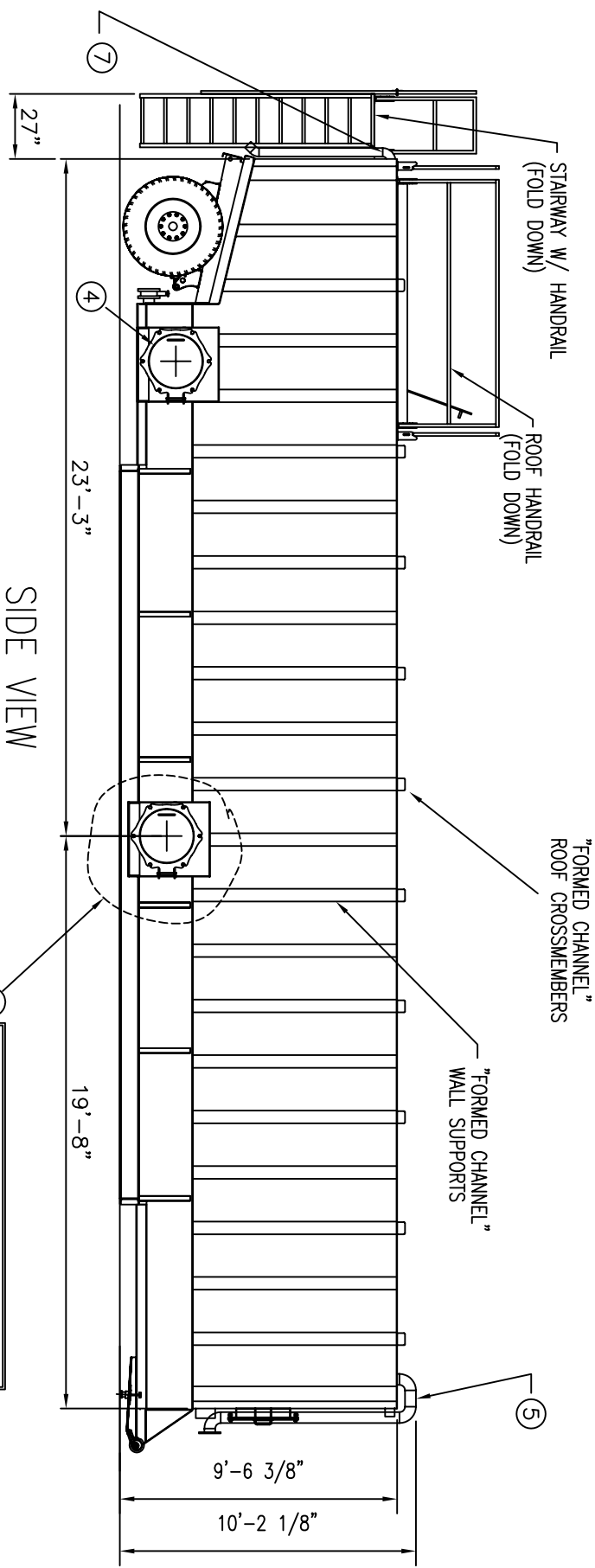
TESTS/CERTIFICATIONS

» Test Performed:	3 psi air test; Scheduled Level I, II and III OMS inspections
-------------------	-------	---

THIS DRAWING APPLIES TO TANKS WITH EQUIPMENT NUMBERS SFVP8315RL - SFVP8321RL



ITEM	QTY	DESCRIPTION
1	1	3" 90 deg. ell with cap and chain (fill)
2	1	Press. (16 oz./sq.in.)/Vac. (0.4 oz./sq.in.) vent valve
3	1	4" Blind flange (vapor recovery conn.)
4	3	22" Manway with Bund-N gasket
5	1	4" Top fill line with butterfly valve
6	1	4" Rear bottom drain with butterfly valve
7	1	3" Overflow line with threaded cap & chain
8	1	3" Overflow



NOTE: THIS MANWAY ONLY ON TANKS SFVP8315RL & SFVP8316RL IN LIEU OF MANWAY AT REAR LOCATION

SPECIFICATIONS:
1) TANK CAPACITY: 18,900 GAL (450 BBL.)

- NOTES:
- THIS DRAWING IS A BASELINE REPRESENTATION FOR THIS MODEL TANK. VARIATIONS BETWEEN THE DRAWING AND THE ACTUAL EQUIPMENT IN THE FIELD CAN AND DO EXIST, PRIMARILY WITH APPURTENANCE LOCATIONS, SIZES AND QUANTITIES. CONSULT YOUR LOCAL BAKER REPRESENTATIVE IF SPECIFIC NEEDS EXIST.
 - THIS TANK IS TO BE TRANSPORTED WHILE EMPTY ONLY. IT IS NOT DESIGNED TO TRANSPORT LOADS.
 - MOST TANKS OF THIS TYPE HAVE AN INTERNAL LINING (COATING).

The information contained herein is proprietary to Baker Tanks and shall not be reproduced or disclosed in whole or in part, or used for any design or manufacture except when user obtains direct written authorization from Baker Tanks.



3020 OLD RANCH PARKWAY
SEAL BEACH, CA 90740-2751

REV.	DESCRIPTION	DATE	BY	SCALE:	SIZE	ORIGINAL DWG. DATE
G				Do Not Scale	B	19SEP02
F						
E						
D						
C						
B						
A						

TITLE	APPROVED BY:	CAT/CLASS	SHEET
WADE SINGLE WALL FIXED AXLE TANK LINED ROUND BOTTOM	P.J.B.	110-1200	1 OF 1

REV.	DESCRIPTION	DATE	BY
S-2-M0011-1			