

PRODUCT DATA SHEET

January, 2007

WATER TOWER (Klein Products of Kansas)

GENERAL INFORMATION

Transportable (meets DOT standards) water storage tank for filling trucks at construction, mining and agricultural sites. This tank is for **WATER STORAGE ONLY**. Tank is pulled behind a tractor to the job site, dropped off and jacked up to operational height via hydraulic legs.

WEIGHTS AND MEASURES

» Capacity:	12,000 gallons
» Height:	13'-6" (lowered – highest point) 22'-0" (raised – highest point)
» Width :	8'-0"
» Length:	42'-10" (nose to ladder cage o.d.) 32'-4" (front tank head to rear tank head)
» Weight:	18,000 lbs. (empty)
» Clearance:	12'-6" from bottom of 5 th wheel plate to grade (raised position)

STRUCTURAL DESIGN

» Tank Shell:	3/16" thick A36 carbon steel
» Legs:	Carbon steel; gusseted
» Skids:	Carbon steel channels

FEATURES

» Down Spout:	12" size with quick opening quarter-turn butterfly valve (chain operated); 4200 gpm max flow. Heavy duty PVC sock.
» Overflow Protection:	3" NPT outlet on rear tank head
» Clean Out:	6" flanged connection on bottom of front tank head

FEATURES – cont.

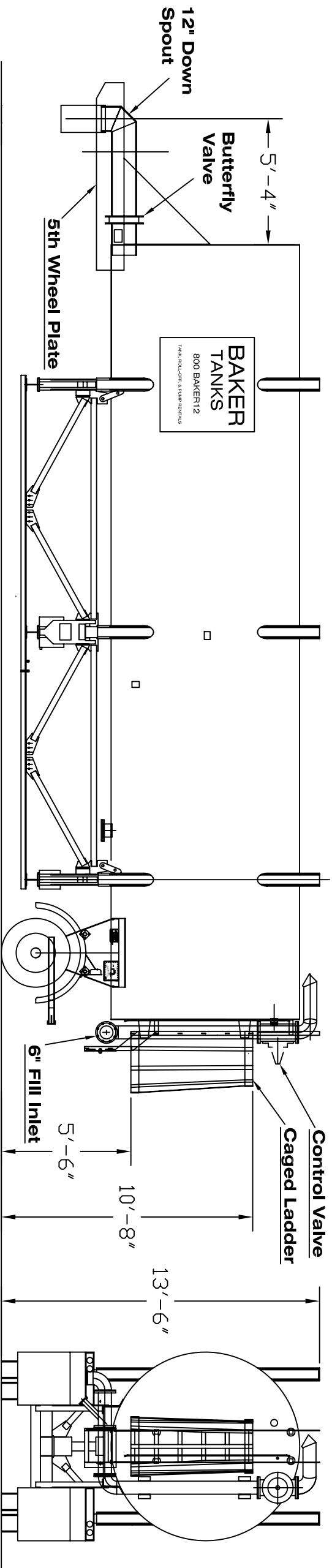
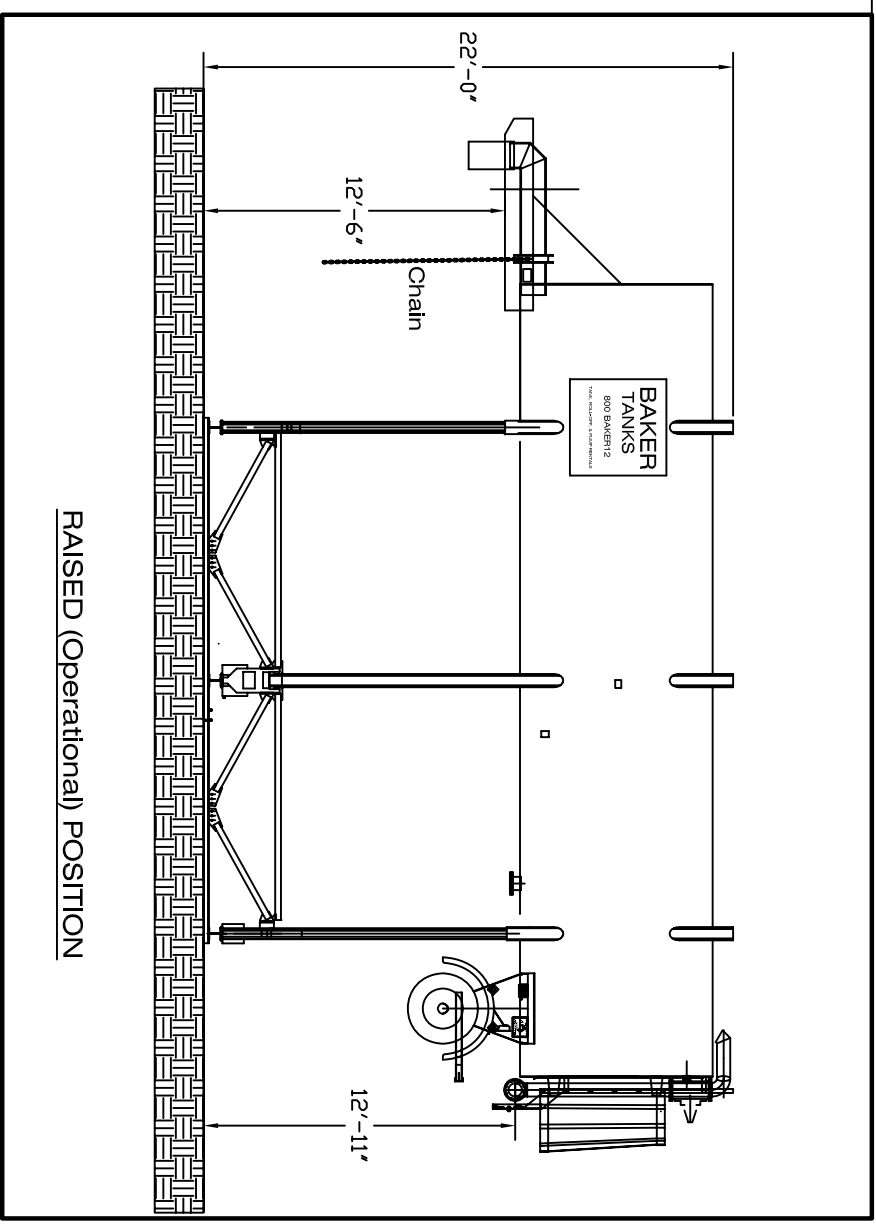
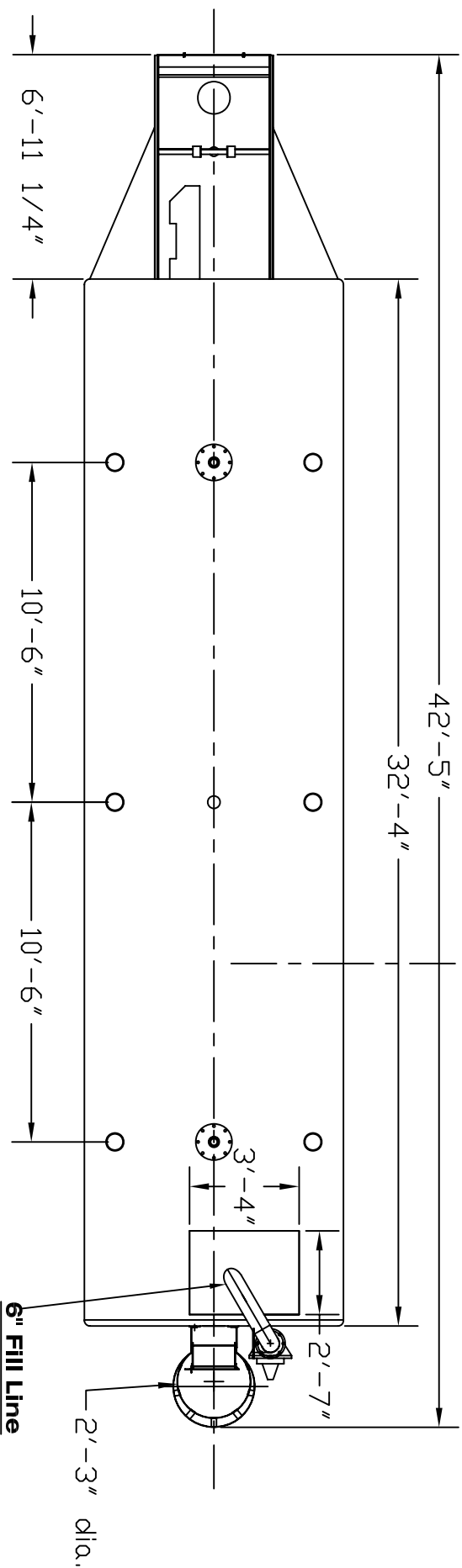
» Level Control:	Ball float at rear tank head
» Wheels:	10-hole Budd; Dual 11x22.5 tires; rise with tank for theft prevention
» Axles:	22,000 lb. rated, fitted with slack adjusters
» Brakes:	ABS. 12¼"x7½" cam shoe type with std. DOT quick disconnects
» Power Pack:	Portable hydraulic, 5 hp gasoline engine with high volume dry brake disconnects
» Light Package:	Turn signal, stop/tail, running and I.C.C. seven-connector plug
» Exterior Ladder:	Rear of tank; enclosed by safety cage
» Landing Gear:	Hydraulically powered

SURFACE DETAILS

» Exterior Coating:	High Gloss Polyurethane
» Interior Coating:	Plexi black

TESTS/CERTIFICATIONS

➤ Test Performed:	OMS inspections on a scheduled basis
-------------------	--------------------------------------



SPECIFICATIONS:
 Nominal Capacity: 12,000 gallons
 Weight (empty): 18,000 lbs.
 Tank Shell: 3/16" thick A36 Carbon Steel
 Max. Fill Rate: 1200 GPM
 Max. Dump Rate: 4200 GPM

The information contained herein is proprietary to BakerCorp and shall not be reproduced or disclosed in whole or in part, or used for any design or manufacture except when user obtains direct written authorization from BakerCorp.

BAKER CORP 3020 OLD RANCH PARKWAY
 SEAL BEACH, CA 90740-2751

REV.	DESCRIPTION	DATE	BY	SCALE:	SIZE	ORIGINAL DWG. DATE
G				To Scale	B	300CT03
F						
E						
D						
C						
B						
A						
REV.						

TITLE	DRAWING NO.	SHEET
KLEIN WATER TOWER	S-9-M0009-1-	1 OF 1
		REV. 0