

PRODUCT DATA SHEET

April, 2008

MODERN FIXED AXLE TANK

(Flat Top Oil Field Frac)

GENERAL INFORMATION

This tank has a corrugated interior wall and "V" shaped bottom for easy cleaning.

WEIGHTS AND MEASURES

» Capacity:	500 BBL (21,000 gallons)
» Height:	9'-9" (grade to roof plate) 10'-3" (grade to top of rear top fill pipe)
» Width :	8'-6"
» Length:	45'-9" (front nose bar to rear top fill pipe)
» Weight:	28,500 lbs.

STRUCTURAL DESIGN

» Floor:	¼" thick ASTM A36 carbon steel "V" bottom sloping from each side into the center
» Walls/Ends:	¼" thick A36 corrugated carbon steel plate
» Roof Deck:	¼" thick A36 carbon steel flat plate
» Floor Support:	10" channel longitudinal runners w/8" channel & formed ¼" plate channel xbeams
» Roof Frame:	¼" thick A36 carbon steel channels (on exterior side of roof)

FEATURES

» Valves:	1-8" front manifold; 1-4" lower front fill; 1-4" front gel line; 1-4" rear drain. All valves are wafer butterfly. Cast iron body, Buna-N seat & seals, 316 SS stem, Nylon 11 coated ductile iron disk w/ plug and chain.
» Relief Valve:	None
» Manifold:	8" header with 4-4" threaded and male-plugged connections on front; 8" hammer unions on both ends.

FEATURES – cont.

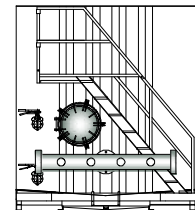
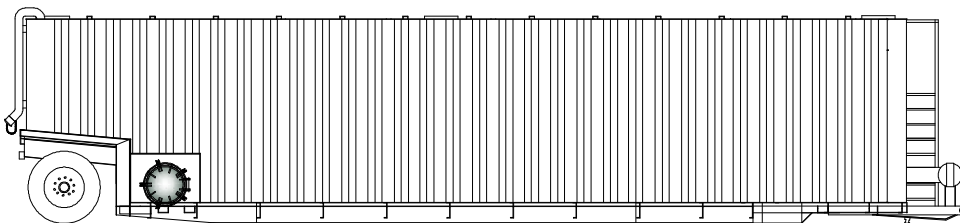
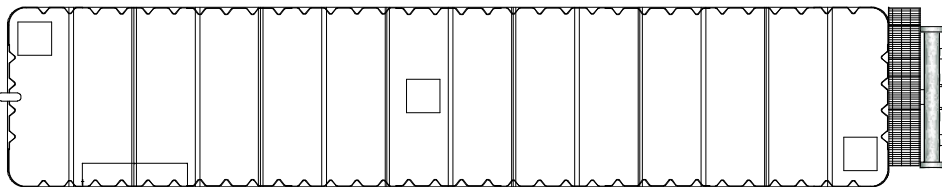
» Top Hatches:	Three 19"x19" hinged lids. One at each end of tank and one in the center.
» Top Fill Line:	3" pipe on rear endwall; capped and chained
» Front Manway:	21" I.D., slotted hinges and 5 - ¾" T or eye bolt with wing nut fasteners, hinged away from stairs, ½" flat plate or 3/8" if domed ASTM A36 steel. Buna N formed gasket, thermally fused.
» Side Manway:	21" I.D., slotted hinges and 5 - ¾" T or eye bolt with wing nut fasteners, mounted on passenger side and hinged to front of tank, ½" flat plate or 3/8" if domed ASTM A36 steel. Buna N formed gasket, thermally fused.
» Stairway:	Front mounted; Non-slip with handrails and guardrails; OSHA compliant
» Level Gauge:	None
» Tires:	11.00 x 22.5 (nylon tubeless)
» Axles:	Standard 22,500#, with air brakes

SURFACE DETAILS

» Exterior Coating:	High gloss polyurethane paint
» Interior Coating:	Chemical resistant lining
» Decals:	See Technical Information Manual

TESTS/CERTIFICATIONS

» Test Performed:	100% water tested to full capacity, BakerCorp Level I, II and III inspections on a scheduled basis
-------------------	--



To the best of our knowledge the technical data contained herein are true and accurate at the date of issuance and are subject to change without prior notice. No guarantee of accuracy is given or implied because variations can and do exist. NO WARRANTY OR GUARANTEE OF ANY KIND IS MADE BY BAKERCORP™, EITHER EXPRESSED OR IMPLIED.