

PRODUCT DATA SHEET

April, 2008

**EZ CLEAN FIXED AXLE
OPEN ACCESS TANK**

GENERAL INFORMATION

This fixed axle tank is designed to provide easy viewing of the contents. Very economical tank for smaller jobs or where space is a premium. Smooth interior walls for easy cleaning.

WEIGHTS AND MEASURES

» Capacity:	480 BBL (20,160 gal.)
» Height:	11'-4" (grade to top rim) 14'-10" (grade to top of upright guardrails)
» Width:	8'-6" (between side runners)
» Length:	39'-11" (front nose to outside of rear stairway) 37'-6" (tank only)
» Weight:	22,860 lbs.

STRUCTURAL DESIGN

» Floor:	¼" thick ASTM A36 carbon steel (V-bottom)
» Sides/Ends:	¼" thick ASTM A36 carbon steel
» Top Catwalk:	1" deep bar grating
» Wall Frame:	3/16"x3"x5" ASTM A36 formed channel
» Top Rim:	4"x4" structural tubing
» Skid Rails:	C8x11.5 structural channel

FEATURES

» Valves:	1-Front & 1-Rear: 6"- wafer butterfly valve. Cast iron body, Buna-N seat & seals, 316 SS stem, Nylon 11 coated ductile iron disk w/ plug and chain.
» Relief Valve:	None (open top)
» Side Manway:	One on curb side of tank; 20" diameter.

FEATURES – cont.

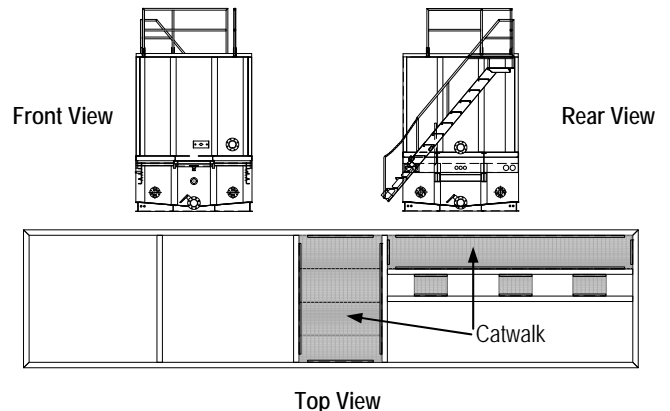
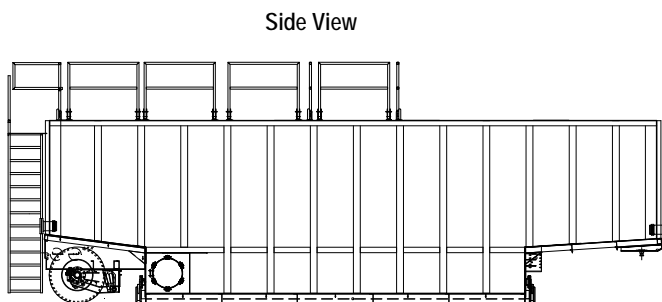
» Front Piping Connections:	<u>Bottom Drain:</u> 6"-150# flanged nozzle and butterfly valve <u>Inlet/Outlet:</u> 2 - 4"-150# raised face flange with blind flange (chained) <u>Thermowell:</u> 1 - 2" 150# blind flanged connection <u>Adjustable Discharge:</u> 1 - 6" 150# blind flanged nozzle
» Rear Piping Connections:	<u>Bottom Drain:</u> 6"-150# flanged nozzle and butterfly valve <u>Inlet/Outlet:</u> 2 - 4"-150# raised face flange with blind flange (chained) <u>Adjustable Discharge:</u> 1 - 6" 150# blind flanged nozzle
» Interior Access:	One internal ladder from middle catwalk
» Manway Seal:	Buna N gasket
» Catwalk Access Stairway:	Rear mounted – lower section folds up for transport and down for use. Stairway includes handrails.
» Guardrails:	Top deck, fold-down, 1¼" x 1¼" square tubing.
» Level Indication:	None
» Axle:	77½ track straight, non steer, 22,500# capacity.
» Suspension:	Silent Drive, 3 air-bags with manual release.

SURFACE DETAILS

» Exterior Coating:	High Gloss Polyurethane
» Interior Coating:	Chemical resistant lining

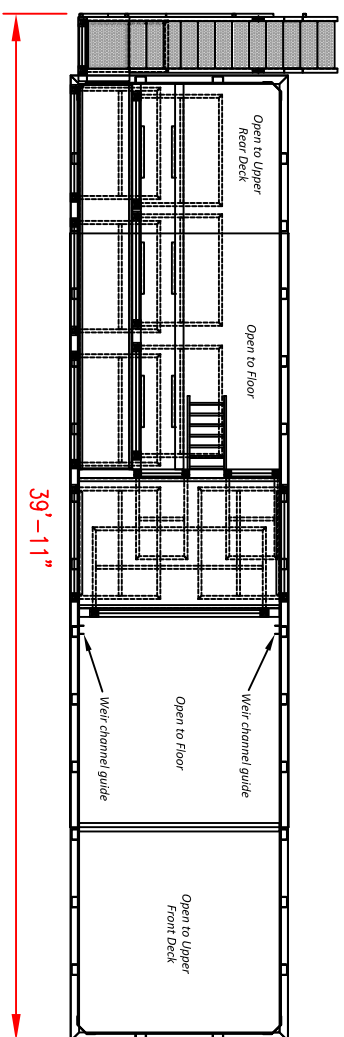
TESTS/CERTIFICATIONS

» Tests Performed:	Major repairs – hydrotest Scheduled- Level I, II and III inspections
--------------------	-------	---

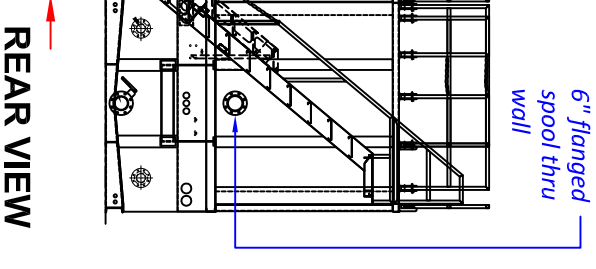
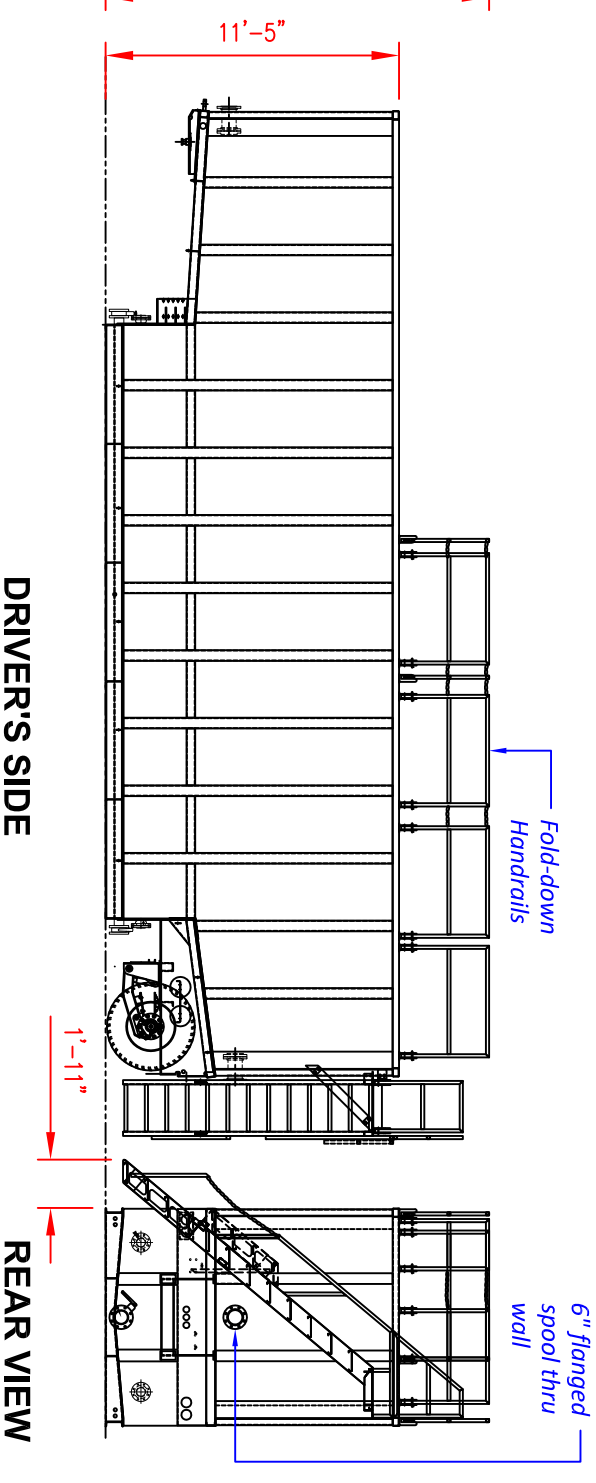
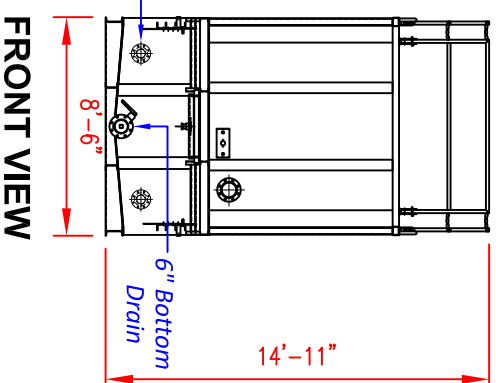
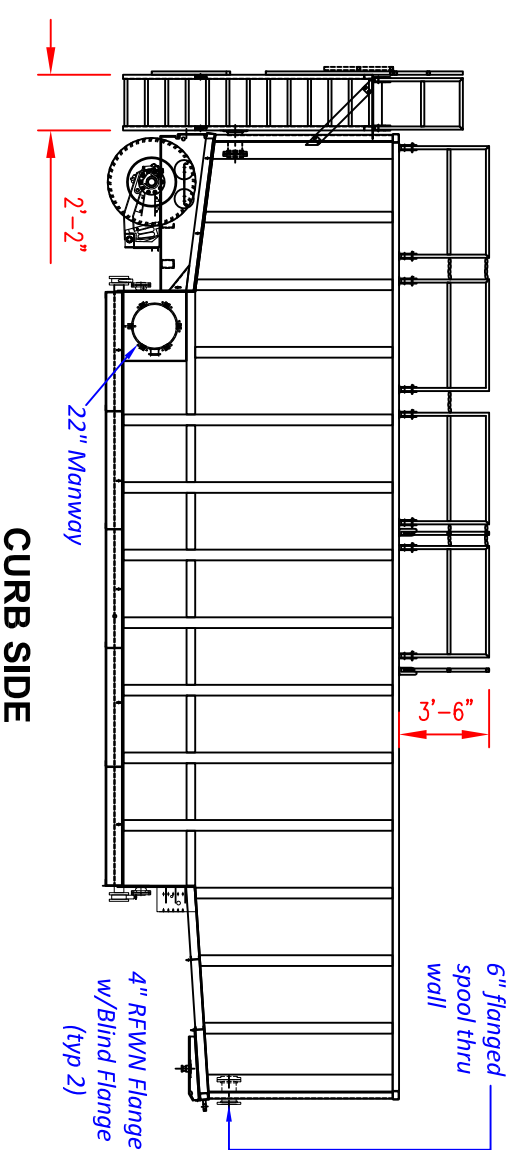
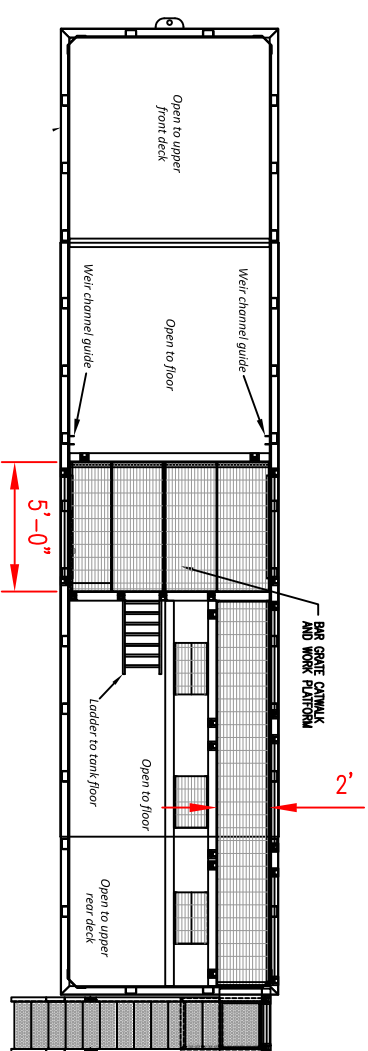


To the best of our knowledge the technical data contained herein are true and accurate at the date of issuance and are subject to change without prior notice. No guarantee of accuracy is given or implied because variations can and do exist. NO WARRANTY OR GUARANTEE OF ANY KIND IS MADE BY BAKERCORP, EITHER EXPRESSED OR IMPLIED.

PLAN VIEW -CATWALK NOT SHOWN / GUARDRAILS DOWN



PLAN VIEW -CATWALK SHOWN/GUARDRAILS NOT SHOWN



SPECIFICATIONS:

- 1) Tank Capacity: 20,160 gallons (480 BBL)
- 2) Tank Weight: 22,860 lbs. (empty)
- 3) Tank is constructed of A36 carbon steel

NOTES:

1. This drawing is a baseline representation for this model of tank. Variations between this drawing and the actual equipment in the field can and do exist, primarily with appurtenance locations, sizes and quantities. Consult your local BakerCorp representative if specific needs exist.
2. **THIS TANK IS NOT DESIGNED FOR TRANSPORTING LIQUIDS.** It should be moved only when empty.
3. Tanks of this type have an internal lining (coating) on the wetted surfaces.

The information contained herein is proprietary to BakerCorp and shall not be reproduced or disclosed in whole or in part, or used for any design or manufacture except when user obtains direct written authorization from BakerCorp.				3020 OLD RANCH PARKWAY SEAL BEACH, CA 90740-2751			
G	SCALE:	Do Not Scale	SIZE	B	ORIGINAL DWG. DATE	30SEP08	
F	DRAWN BY:	P.J.B.	APPROVED BY:	--	CAT/CLASS	--	
E	TITLE	EZ CLEAN FIXED AXLE OPEN ACCESS VERSION		SHEET	1 OF 1		
D	DRAWING NO.	S-2-M0019-1-		REV.	0		
C	DESCRIPTION	DATE	BY				
B							
A							
REV.							