

PRODUCT DATA SHEET

October, 2007

OPEN ACCESS TANK

GENERAL INFORMATION

This tank is designed to provide easy viewing of the contents and is a variation of the standard Open Top tank. A fixed stairway has been added to the rear of the Open Top tank, as well as a catwalk from the stairway landing to the center catwalk.

WEIGHTS AND MEASURES

» Capacity:	500 BBL. (21,000 gal.)
» Height:	12'-5" (grade to roof)
» Width :	8'-0"
» Length:	35'-0"
» Weight:	18,000 lbs. (approx.)

STRUCTURAL DESIGN

» Floor:	¼" thick ASTM A36 carbon steel
» Sides/Ends:	¼" thick ASTM A36 carbon steel
» Wall Frame:	Structural steel channel/angle on interior side
» Floor Frame:	6" carbon steel I-beam on exterior side
» Top Frame:	Structural steel for catwalks
» Internal Cross Bracing:	17 - 3"x3"x¼" angle iron

FEATURES

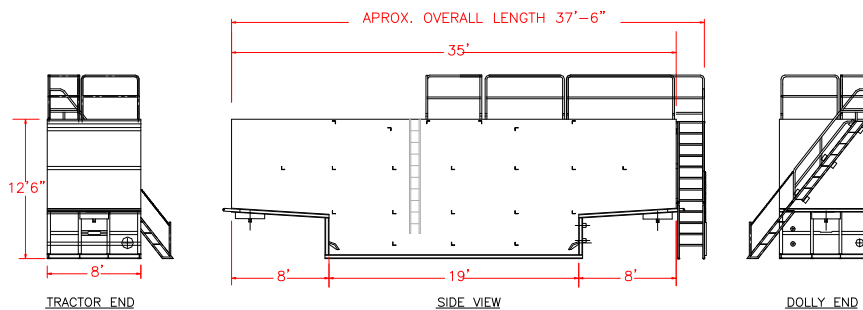
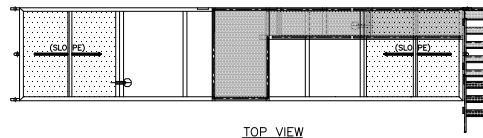
» Valves:	1-4" butterfly valve front end – driver side; 1-4" butterfly valve rear end – passenger side (some tanks have 6")
» Relief Valve:	None
» Interior Access:	Open top with catwalk from stairway to middle and then across the tank
» Exterior Stairway:	Rear end – lower section folds for extension and retraction. Stairway includes handrails.
» Internal Ladder:	One; fixed and accessed from catwalk
» Bottom Sump:	One on each end of tank, either flat bottomed, 12" diameter, 3" deep, or domed, 14" diameter, 4" deep
» Front Inlet:	4" diameter capped nipple
» Front Drain:	4" diameter capped nipple (some tanks have 6") (some may also be total drain with valve)
» Level Gauge:	None
» Guardrails:	Along stairway and catwalks only
» Rear Wheels:	Removable dolly (not a fixed axle)

SURFACE DETAILS

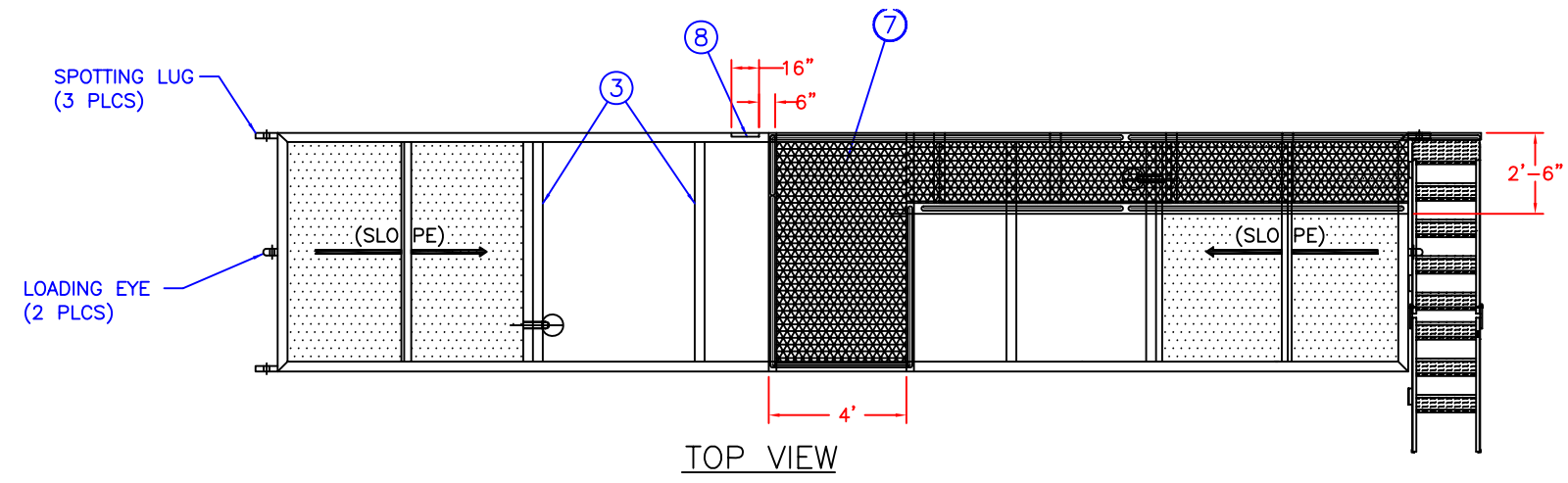
» Exterior Coating:	High Gloss Polyurethane
» Interior Coating:	None

TESTS/CERTIFICATIONS

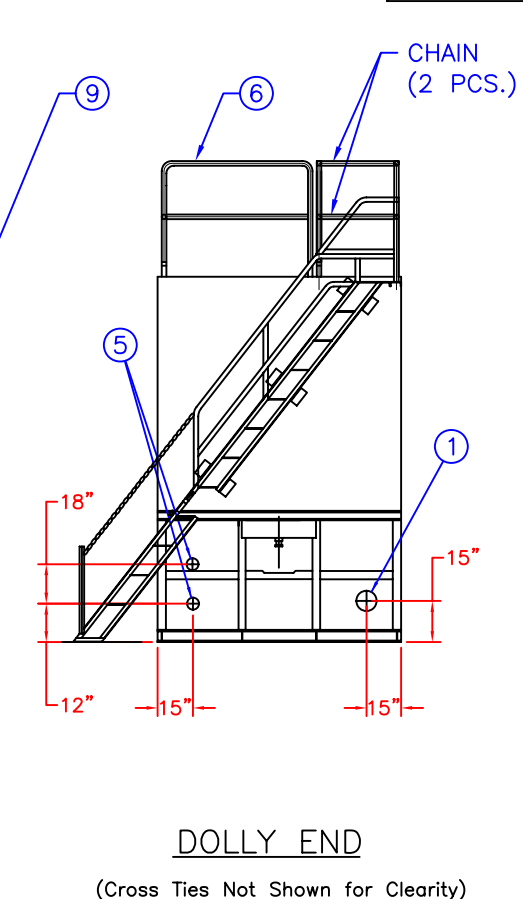
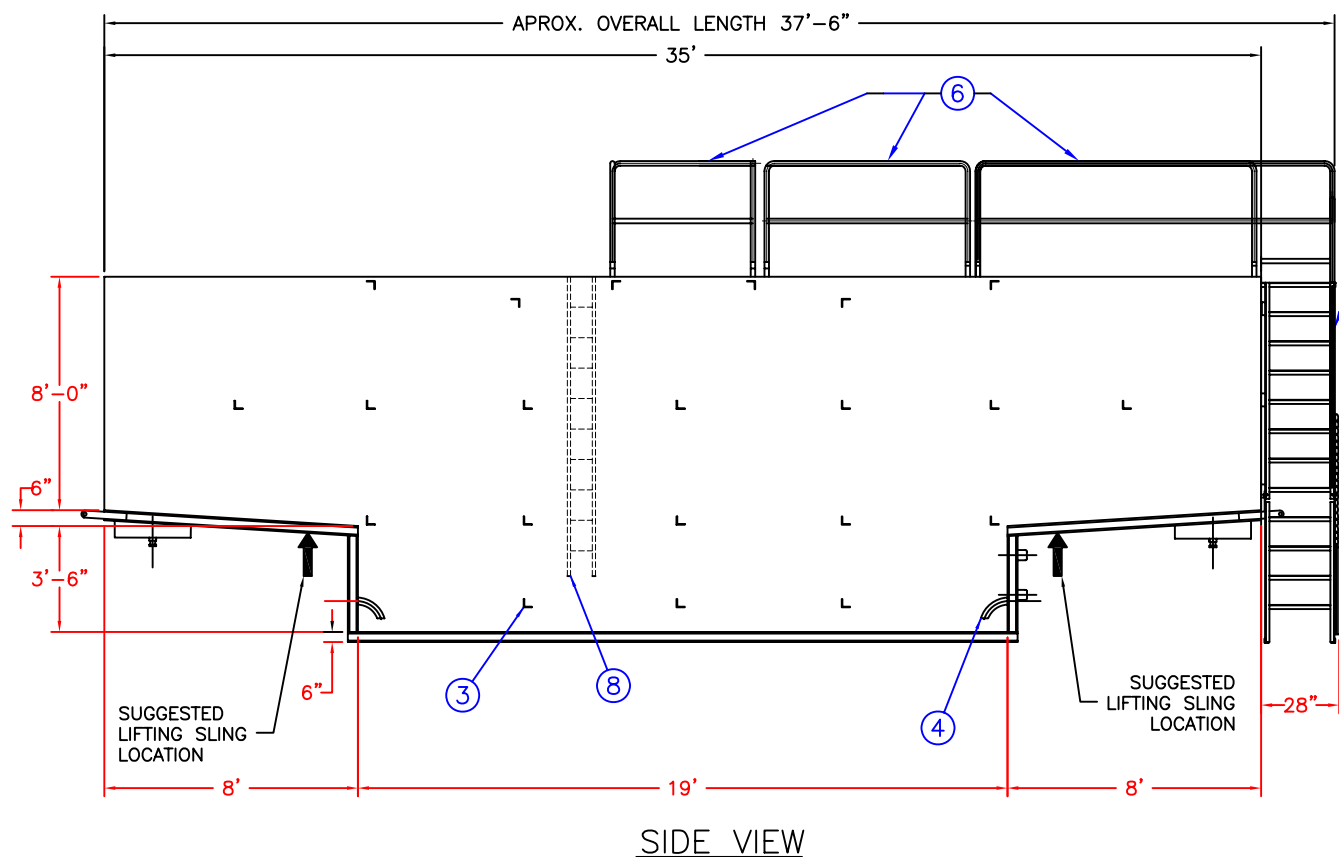
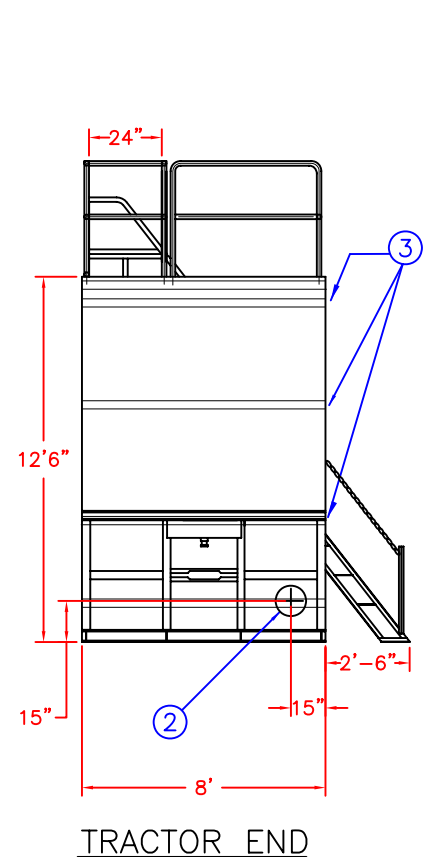
» Test Performed:	Major repairs – hydrotest Scheduled- Level I, II and III inspections
-------------------	---



To the best of our knowledge the technical data contained herein are true and accurate at the date of issuance and are subject to change without prior notice. No guarantee of accuracy is given or implied because variations can and do exist. NO WARRANTY OR GUARANTEE OF ANY KIND IS MADE BY BAKERCORP, EITHER EXPRESS OR IMPLIED.



ITEM	QTY	DESCRIPTION
1	1	4" BUTTERFLY VALVE (SEE NOTE 1)
2	1	6" BUTTERFLY VALVE (SEE NOTE 1)
3	TBD	INTERNAL CROSS TIES
4	2	SUMP DRAW
5	2	4" DIA. CAPPED NIPPLE (SEE NOTE 1)
6	1 SET	OSHA COMPLIANT FOLDABLE CATWALK HANDRAIL
7	1	EXPANDED METAL CATWALK
8	1	INTERNAL LADDER
9	1	OSHA COMPLIANT STAIRWAY AND RAILS



SPECIFICATIONS:

- 1) Tank Capacity: 21,000 gallons (500 BBL)
- 2) Tank Weight: 18,000 - 19,000 lbs. (empty)
- 3) Material of Construction: A36 Carbon Steel

NOTES:

- 1. This drawing is a baseline representation for this model of tank. Variations between this drawing and the actual equipment in the field can and do exist, primarily with appurtenance locations, sizes and quantities. Consult your local BakerCorp representative if specific needs exist.
- 2. THESE TANKS ARE NOT DESIGNED FOR TRANSPORTING LIQUIDS. Tanks should be moved only when empty.

The information contained herein is proprietary to BakerCorp and shall not be reproduced or disclosed in whole or in part, or used for any design or manufacture except when user obtains direct written authorization from BakerCorp.				3020 OLD RANCH PARKWAY SEAL BEACH, CA 90740-2751					
G				SCALE:	None	SIZE	B	ORIGINAL DWG. DATE	12MAR02
F				DRAWN BY:	A. R.	APPROVED BY:	-	CAT/CLASS	--
E				TITLE	OPEN ACCESS TANK			SHEET	1 OF 1
D				DRAWING NO.	S-1-M0005-1-			REV.	A
C				REV.	DESCRIPTION	DATE	BY		
B									
A	ADDED HIDDEN LINES	7/12/05	Z.E.R.						