

PRODUCT DATA SHEET

January, 2007

MODERN FIXED AXLE TANK

(500 BBL ROUND BOTTOM VERSION)

GENERAL INFORMATION

This tank has a smooth interior wall and round bottom for easy cleaning.

WEIGHTS AND MEASURES

» Capacity:	500 BBL (21,000 gallons)
» Height:	10'-8" (grade to roof plate) 13'-4" (grade to upright guardrail)
» Width :	8'-6"
» Length:	47'-2" (nose to tail) 42'-11" (end wall to end wall)
» Weight:	29,000 lbs. (est.)

STRUCTURAL DESIGN

» Floor:	¼" thick ASTM A36 carbon steel round bottom
» Sides/Ends:	¼" thick ASTM A36 carbon steel
» Top Deck:	¼" thick ASTM A36 carbon steel
» Wall Frame:	6" wide channel-shaped steel (on exterior side of walls)
» Roof Frame:	3" wide x 1½" tall channel-shaped steel (on exterior side of roof deck)
» Internal Cross Bracing:	None

FEATURES

» Valves:	2-Front & 1-Rear: 4"- wafer butterfly valve. Cast iron body, Buna-N seat & seals, 416 SS stem, Nylon 11 coated ductile iron disk w/ plug and chain.
» Relief Valve:	16 oz./in ² pressure setting, 0.4 oz./in ² vacuum setting; Buna-N seal
» Front Inlet:	8" connection, flanged on the inside and outside of the tank
» Front Drain:	4"-150# flanged connection with butterfly valve
» Rear Drain:	4"-150# flanged connection with butterfly valve and remote operation handle

FEATURES – cont.

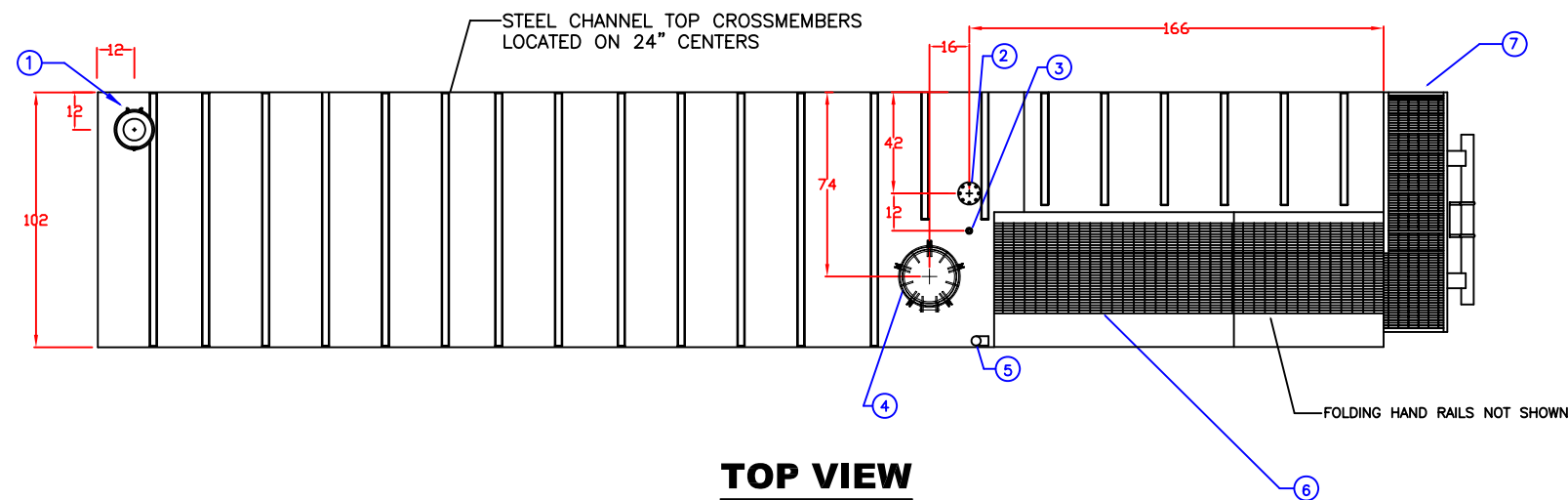
» Fill Line:	3" pipe, top of tank, with cap and chain
» Gel Line:	4" sch. 40 pipe; flanged with butterfly valve
» Top Vapor Connection:	4"-150# weld neck flange with blind flange (chained) and Buna N gasket
» Top Manway:	One - 21½" I.D. domed lid w/anti-personnel bars, slotted hinges and 5 - ¾" T or eye bolt with wing nut fasteners, hinged to side of tank. Buna-N (NBR) gasket.
» Front Manway:	One - 21½" I.D. domed lid, slotted hinges and 5 - ¾" T or eye bolt with wing nut fasteners,, hinged away from stairs. Buna-N (NBR) gasket.
» Side Manway:	One - 21½" I.D. domed lid, slotted hinges and 5 - ¾" T or eye bolt with wing nut fasteners,, mounted on passenger side and hinged to front of tank. Buna-N (NBR) gasket.
» Stairway:	Front-mounted with access from driver's side of tank
» Level Gauge:	Ball style with 2-8" 304 SS floats. Floor supports hold floats ½" off floor.
» Tires:	11.00 x 22.5 (nylon tubeless)
» Axles:	25K axle, automatic slack adjusters, top mounted 30 service chambers, outboard drums

SURFACE DETAILS

» Exterior Coating:	High gloss polyurethane paint
» Interior Coating:	Chemical resistant lining
» Safety Paint:	Safety yellow – handrails, hatch covers and trip hazard surfaces
» Placard Mounts:	Removable 10-gauge steel, 48"x48", both sides of tank at top rear. Secured with nylock nuts or bolts with lock washers.

TESTS/CERTIFICATIONS

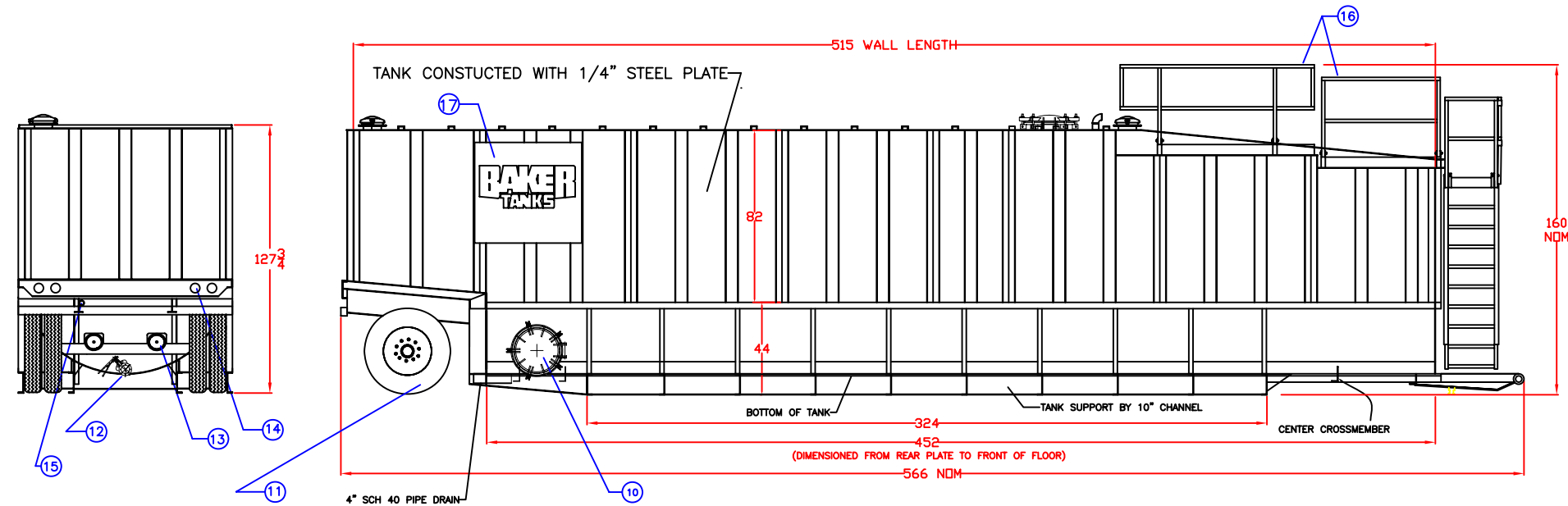
» Test Performed:	100% water tested to full capacity, 3 psi – 20 min test; Level I, II and III inspections on a scheduled basis
-------------------	---



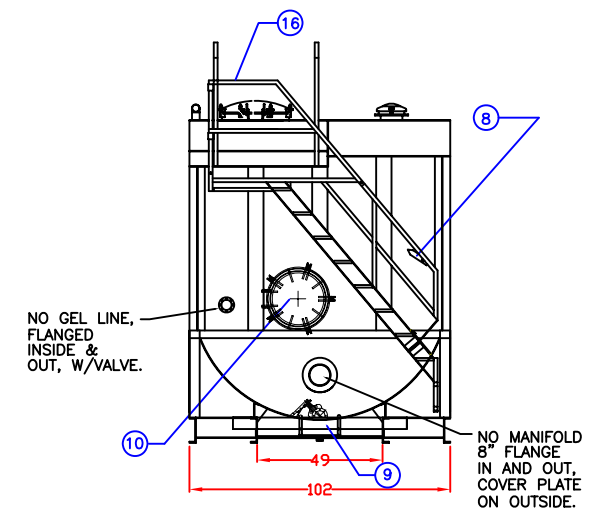
TOP VIEW

- 1) FLANGE MOUNT BLAYLOCK LL10 P/V VENT
160Z SETTING, BAKER SPEC
- 2) 4" FLANGE WITH BLIND CAP AND CHAIN
- 3) 2" COUPLING WITH PLUG
- 4) MANWAY WITH INTERNAL BARS, 21 1/2"ID, DOMED LID
- 5) 3" NIPPLE WITH CAP AND CHAIN
- 6) SAFETY WALK WAY
- 7) ACCESS STAIRS
- 8) LEVEL GAUGE W/2-8" STAINLESS STEEL BALL
"Y" SUPPORT HOLDS BALLS 1/2" OFF FLOOR
- 9) FRONT DRAIN W/VALVE, PLUG, CHAIN
- 10) MANWAY, 21 1/2"ID, DOMED LID (2)
- 11) 11.00 X 22.5 TUBLESS TIRE ON 10 HOLE STEEL WHEEL
- 12) 4" FLANGE, VALVE, THREADED FLANGE, PLUG, CHAIN
REMOTE OPERATION HANDLE
- 13) 25K AXLE, AUTOMATIC SLACK ADJUSTERS, TOP MOUNTED
30 SERVICE CHAMBERS, OUTBOARD DRUMS, HUTCH
9700 SUSPENSION, 3 LEAF HIGH ARCH SPRINGS
- 14) DOT TAIL LIGHTS AND LOWER MARKER LIGHTS, NO TOP LIGHTS
- 15) 1" X 6" PIPE W/WELDED CAP & THREADED CAP
- 16) FOLDING HAND RAILS
- 17) 48x48 BOLTED PLATE (for Baker Decal)

NOTE:
ALL VALVES BRAY SERIES 30, CAST IRON BODY,
416SS STEM, BUNA-N SEAT, NYLON 11 COATED
DUCTILE IRON DISC, HANDLES AS SHOWN.
ALL WALL AND ROOF RIBS TO BE CONTINUOUSLY
WELDED, ALL TANK SHELL SEAMS TO BE WELDED
ON BOTH SIDES.
100% CAPACITY WATER TEST @ 3 PSI
SOME ITEMS MAY NOT BE SHOWN IN ALL VIEWS



SIDE VIEW



FRONT VIEW

NOTES:
STAIRS FITTED WITH LOWER 1/2 WIDTH SECTION
REMOVABLE TO REPLACE WITH FULL WIDTH STEP OPTION

SPECIFICATIONS:

- 1) Tank Capacity: 20,100 gallons (500 BBL)
- 2) Tank Weight: 28,800 lbs. (empty)

NOTES:

1. This drawing is a baseline representation for this model of tank. Variations between this drawing and the actual equipment in the field can and do exist, primarily with appurtenance locations, sizes and quantities. Consult your local BakerCorp representative if specific needs exist.
2. THIS TANK IS *NOT DESIGNED FOR TRANSPORTING LIQUIDS*. It should be moved only when empty.
3. Tanks of this type have an internal lining (coating) on the wetted surfaces.
4. This tank is equipped with a pressure/vacuum relief valve set at 1.0 lbs/sq. in. pressure and 0.4 oz/sq.in. vacuum.

The information contained herein is proprietary to Baker Tanks and shall not be reproduced or disclosed in whole or in part, or used for any design or manufacture except when user obtains direct written authorization from Baker Tanks.

BAKERCORP 3020 OLD RANCH PARKWAY
SEAL BEACH, CA 90740-2751

G				SCALE:	SIZE	ORIGINAL DWG. DATE
F				Do Not Scale	B	27SEP04
E				DRAWN BY:	APPROVED BY:	CAT/CLASS
D				V.A.W.	-	--
C				TITLE		SHEET
B				MODERN MFG. ROUND BOTTOM FIXED AXLE TANK - 500BBL		1 OF 1
A	fixed text	7/12/05	ZER	DRAWING NO.		REV.
REV.	DESCRIPTION	DATE	BY	S-2-M0006-2-		A