

PRODUCT DATA SHEET

January, 2007

ESPM FIXED AXLE TANK (SMOOTH-WALL LODI VERSION)

GENERAL INFORMATION

This tank has a smooth interior wall for easy cleaning.

WEIGHTS AND MEASURES

» Capacity:	467 BBL (19,612 gals.) – Straight stairway, or 474 BBL (19908 gals.) – Crossing stairway
» Height:	10'-3½" (overall) 9'-2" (tank only)
» Width :	8'-0" (overall) 7'-5½" (inside width)
» Length:	46'-0" (overall) 42'-7" (tank only)
» Weight:	29,500 lbs. ±

STRUCTURAL DESIGN

» Floor:	¼" thick ASTM A36 carbon steel
» Sides/Ends:	¼" thick ASTM A36 carbon steel
» Roof Deck:	¼" thick ASTM A36 carbon steel
» Wall Frame:	6"x3"x¼" ASTM A36 formed channel on 27" centers (on exterior side of walls)
» Roof Framing:	¼" ASTM A36 formed channels on 24" centers

FEATURES

» Valves:	(2)Front & (1)Rear: wafer butterfly valve. Cast iron body, Buna-N seat & seals, 316 SS stem, Nylon 11 coated ductile iron disk, with plug and chain.
» Relief Valve:	16 oz./in ² pressure setting, 0.4 oz./in ² vacuum setting; Buna-N seal
» Rear Drain:	4"-150# FNPT flange
» Front Drain:	4"-150# FNPT flange

FEATURES – cont.

» Top Manway:	22' I.D. min. - ½" flat steel with slotted hinges w/ Buna-N seal (thermally fused to tank)
» Front Manway:	22' I.D. min. - 1/2" flat steel with slotted hinges w/ Buna-N seal (thermally fused to tank)
» Side Manway:	22' I.D. min. - 1/2" flat steel with slotted hinges w/ Buna-N seal (thermally fused to tank)
» Stairway:	Non-slip w/handrails & guardrails; OSHA compliant
» Top Fill Conn:	3" sch. 40 pipe with cap & chain
» Level Gauge:	Ball float style; 2-8" SS floats
» Tires:	11.00 x 22.5 Nylon tubeless
» Axles:	Standard 22,500#, automatic slack adjusters, cast drum and hub, 30 service chambers, outboard drums (Rockwell 5" O.D. x ½" wall x 71.5" track w/ oil seals)
» Suspension:	Reyco 3-spring 22,500 lb. Capacity
» Brakes:	Air brake system

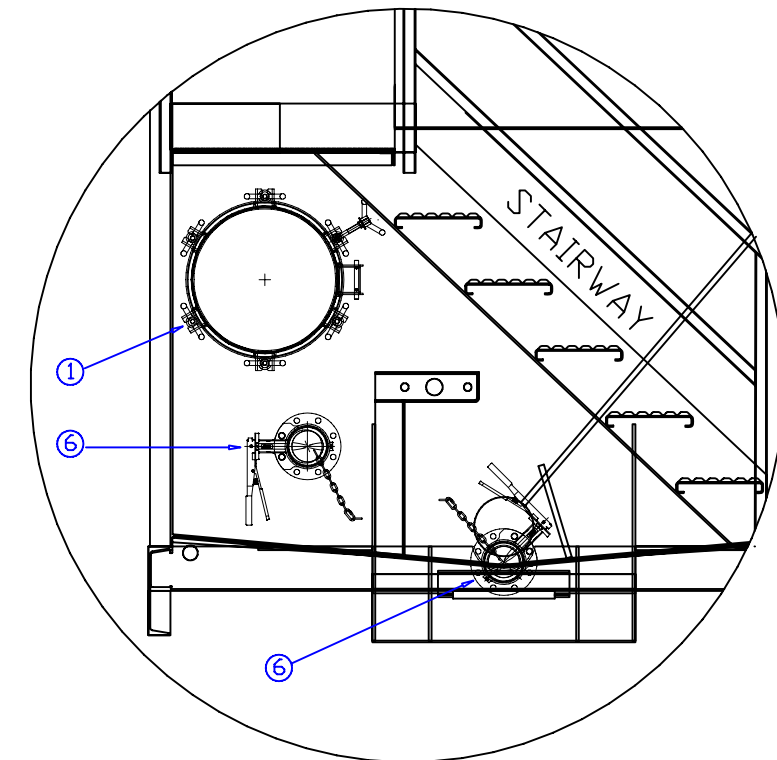
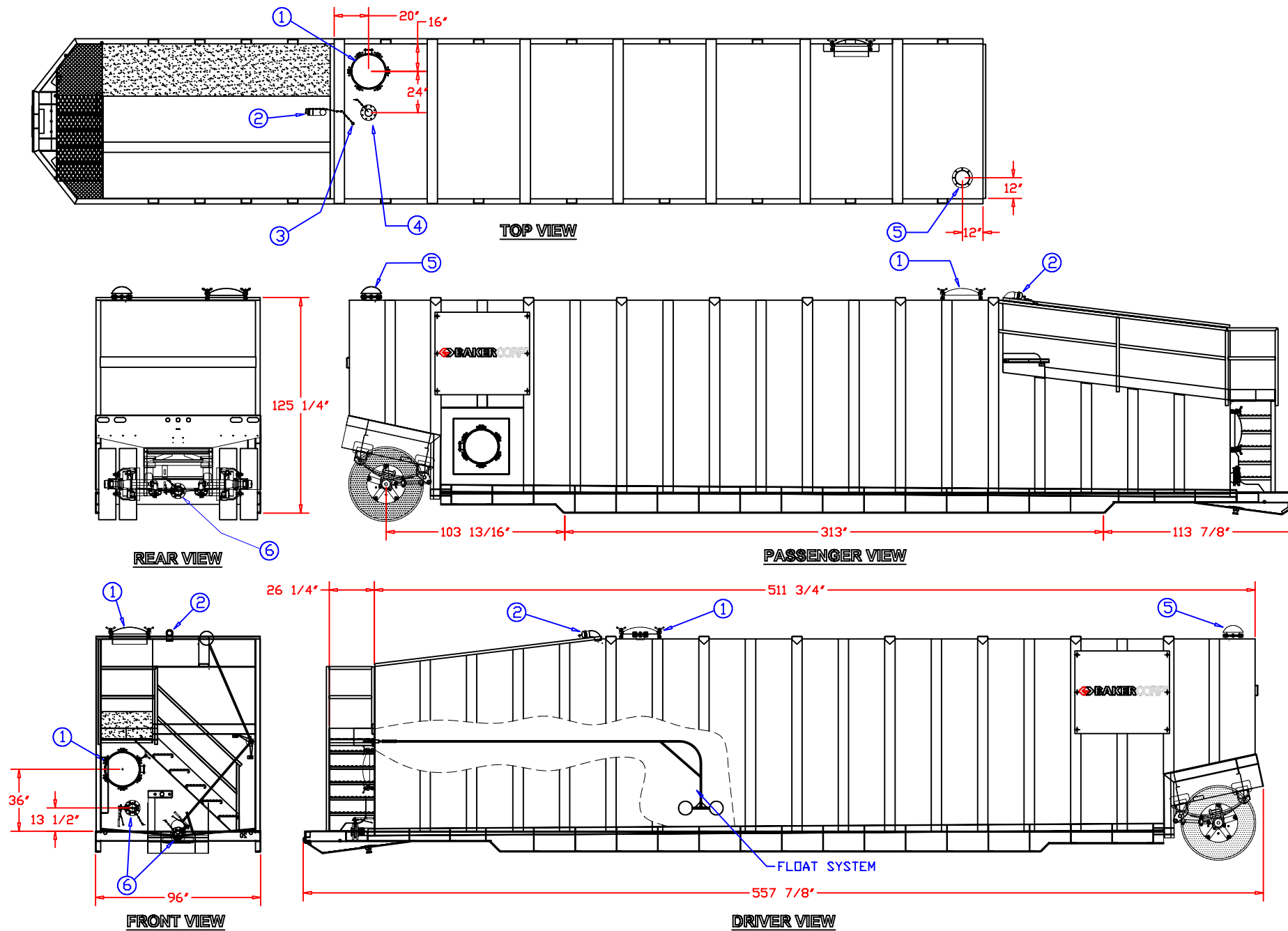
SURFACE DETAILS

» Exterior Coating:	High Gloss Polyurethane
» Interior Coating:	Chemical resistant lining
» Safety Paint:	Safety yellow on handrails, hatch covers and trip hazard surfaces

TESTS/CERTIFICATIONS

» Test Performed:	Hydrostatic water test after construction and major repairs; Level I, II and III inspections on a scheduled basis
-------------------	---

ITEM	QTY	DESCRIPTION
1	3	21" MANWAY
2	1	3' ELBOW
3	1	2" VENT COUPLING WITH PLUG
4	1	4" WELD NECK AND BLIND FLANGE
5	1	8" BLAYLOCK MODEL LL10 PRESSURE/VACUUM VALVE
6	3	4" BUTTERFLY VALVE



SPECIFICATIONS:

- 1) Tank Capacity: 19,194 gallons (457 BBL)
- 2) Tank Weight: 29,500 lbs. (empty)

NOTES:

1. This drawing is a baseline representation for this model of tank. Variations between this drawing and the actual equipment in the field can and do exist, primarily with appurtenance locations, sizes and quantities. Consult your local BakerCorp representative if specific needs exist.
2. THIS TANK IS **NOT DESIGNED FOR TRANSPORTING LIQUIDS**. It should be moved only when empty.
3. Tanks of this type have an internal lining (coating) on the wetted surfaces.
4. This tank is equipped with a pressure/vacuum relief valve set at 1.0 lbs/sq. in. pressure and 0.4 oz/sq.in. vacuum.

The information contained herein is proprietary to BakerCorp and shall not be reproduced or disclosed in whole or in part, or used for any design or manufacture except when user obtains direct written authorization from BakerCorp.

BAKERCORP 3020 OLD RANCH PARKWAY
SEAL BEACH, CA 90740-2751

G				SCALE:	SIZE	ORIGINAL DWG. DATE
F				DO NOT SCALE	B	11JUN02
E				DRAWN BY:	APPROVED BY:	CAT/CLASS
D				PJB	-	110-1200
C				TITLE		SHEET
B				ESP MFG. FIXED AXLE TANK (RECESSED STAIRWAY VERSION)		1 OF 1
A	FIXED CUTAWAY / LINEWEIGHTS	7/12/05	Z.E.R	DRAWING NO.		REV.
REV.	DESCRIPTION	DATE	BY		S-2-M0001-1-	A