

PRODUCT DATA SHEET

October, 2007

**420 BBL FIXED AXLE
DOUBLE WALL TANK (Pinnacle)**

GENERAL INFORMATION

All four walls and the V-bottom of this tank are double-skinned. The open area between the walls (interstitial area) will contain leakage from the primary (inner) wall, should that occur, preventing liquid from leaking to the environment. There are interstitial drains to check for leaks.

WEIGHTS AND MEASURES

» Capacity:	420 BBL (17,622 gal.)
» Height*: *Tank resting on grade w/axle retracted	9'-0" (to top of tank roof steel) 9'-7" (to handrails when folded down) 12'-6" (to handrails in upright position)
» Width:	8'-6"
» Length:	45'-7" (overall – nose to tail)
» Weight:	36,300 lbs.

STRUCTURAL DESIGN

» Outer Floor:	1/4" ASTM A36 carbon steel
» Inner Floor:	1/4" ASTM A36 carbon steel
» Outer Skin: (Sides/ends)	3/16" ASTM A36 carbon steel
» Inner Skin: (sides/ends)	1/4" ASTM A36 carbon steel
» Roof Deck:	1/4" ASTM A36 carbon steel
» Interstitial Framing:	1/4" x 6" x 2 3/4" formed carbon steel channel

FEATURES

» Valves:	(1)Front & (1)Rear: 4"- wafer butterfly valve. Cast iron body, Buna-N seat & seals, 316 SS stem, Nylon 11 coated ductile iron disk, with plug and chain.
» Relief Valve:	16 oz./in ² pressure setting, 0.4 oz./in ² vacuum setting; Buna-N seal
» Front Drain:	4" flange w/butterfly valve along centerline bottom of floor
» Rear Drain:	4" flange w/butterfly valve along centerline bottom of floor

FEATURES – cont.

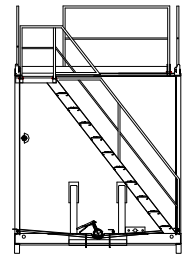
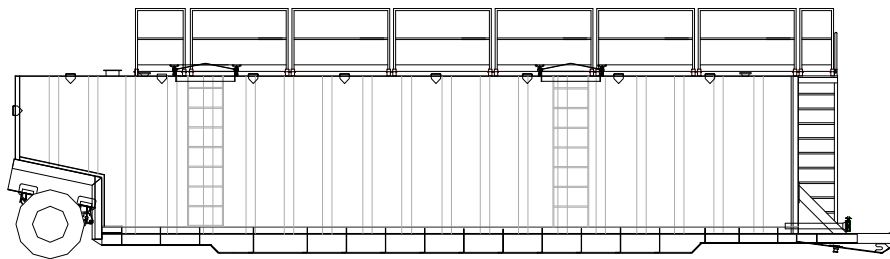
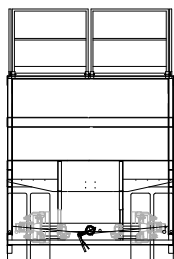
» Interstitial Drains:	Six (6) total – three 3/4" ball valves each on front and rear of tank.
» Manways:	Two (2) – 36" round (steel) on roof along tank centerline, near front and rear of tank; Buna-N ring gaskets. Removable fall protection grid over manway opening.
» Roof Access:	Stairway at front of tank with OSHA handrail
» Guardrails:	Self locking & fold-down; 1 1/4" square tubing around top perimeter of tank
» Internal Ladder:	One (1) located below each top hatch, constructed of 3/4" round bar
» Level Gauge:	Ball float style, 2-8" 304 SS floats
» Misc. Piping Connections:	Three (3) 4" blind-flanged nozzles on the roof, one on each end and another at the tank center. One (1) 2" blind-flanged nozzle on roof at front end of tank.
» Tires:	11R x 22.5 14 ply
» Axles:	71.5" track, 22,500 lbs. capacity

SURFACE DETAILS

» Exterior Coating:	High gloss polyurethane
» Interior Coating:	Chemical resistant lining
» Safety Paint:	Safety yellow – handrails, hatch covers and trip hazard surfaces

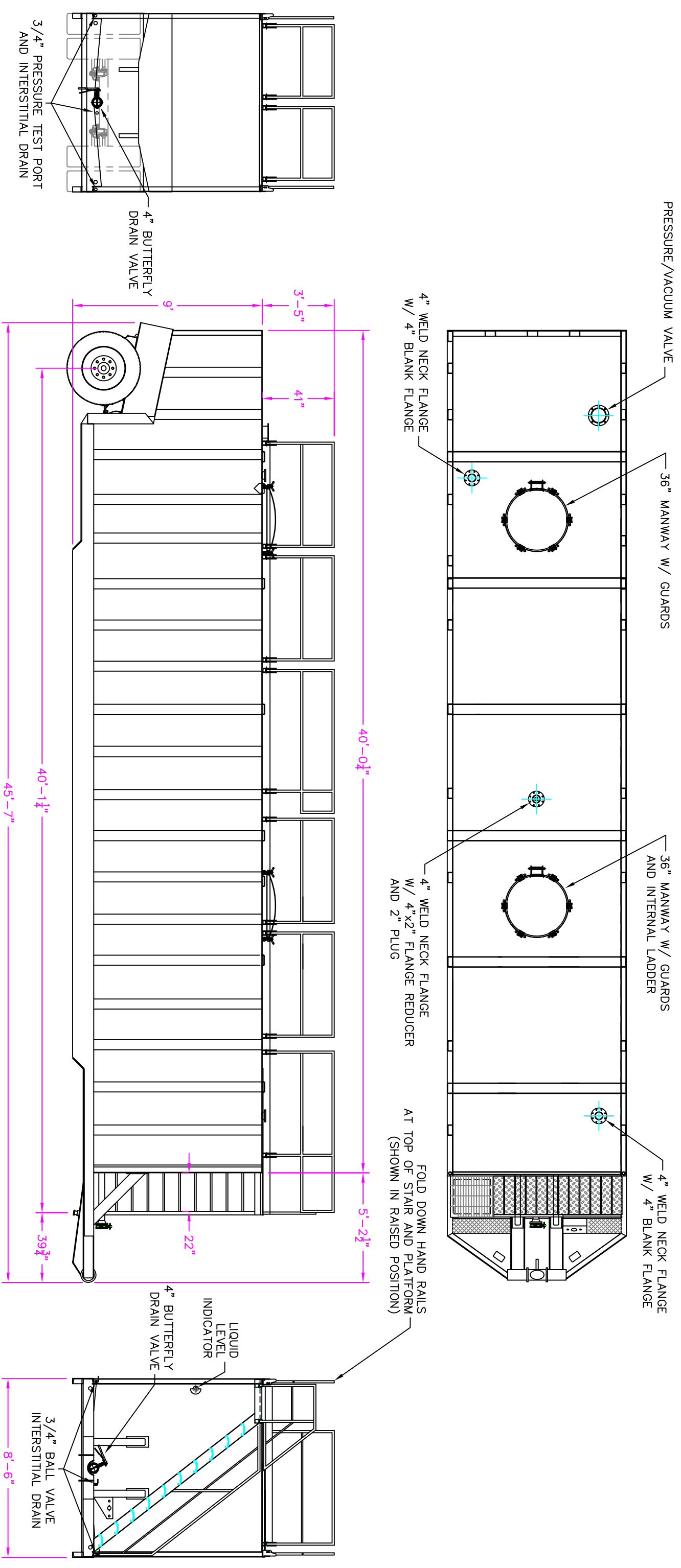
TESTS/CERTIFICATIONS

» Test Performed:	3 psi air test; scheduled Level 1, 2 & 3 QMS inspections
-------------------	--



To the best of our knowledge the technical data contained herein are true and accurate at the date of issuance and are subject to change without prior notice. No guarantee of accuracy is given or implied because variations can and do exist. NO WARRANTY OR GUARANTEE OF ANY KIND IS MADE BY BAKERCORP, EITHER EXPRESSED OR IMPLIED.

3020 Old Ranch Parkway • Suite 220 • Seal Beach, CA • 562-430-6262



SPECIFICATIONS:

Tank Capacity: 420 BBL (17,600 Gallons)

Tank Weight:

NOTES:

1. This drawing is a baseline representation for this model of tank. Variations between this drawing and the actual equipment in the field can and do exist, primarily with appurtenance locations, sizes and quantities. Consult your local BakerCorp representative if specific needs exist.
2. This Tank is **NOT DESIGNED FOR TRANSPORTING LIQUIDS**. It should be moved only when empty.
3. This Tank is equipped with a pressure/vacuum relief valve set at 1.0 lbs/inch² pressure and 0.4 oz/inch² vacuum.

<small>This design, information and data contained herein is proprietary and is submitted in confidence and shall not be disclosed, used or duplicated in whole or in part for any purposes whatsoever without prior written permission from Baker Corp. This document shall be returned to Baker Corp. on its demand. Receipt of this document shall be deemed to be an acceptance of the conditions specified herein.</small>			
TOLERANCE: Fractions: +1/-1/16 Decimals: .XX +1/-1/16 Angles: .XXX +1/-1/32 Bends: +1/-2"		MATERIAL: FINISH:	
CUSTOMER: -		TITLE: <h2 style="text-align: center;">BAKER CORP[®]</h2> <h3 style="text-align: center;">DOUBLE WALL TANK</h3> <h4 style="text-align: center;">AL 470-DW STANDARD SPECIFICATIONS</h4> <p style="text-align: center; font-size: small;">3020 OLD RANCH PARKWAY SEAL BEACH, CA 90740-2751</p>	
DWG BY: J. GONZALEZ OKD BY: -	DATE: 01-30-08 DATE: -	SCALE: NOTS DWG No: S2M0017	JOB No: 00 SHEET: 1 OF 1 REV: -