

PRODUCT DATA SHEET

January, 2007

VE SMOOTH WALL "SMART STEP" FIXED AXLE

GENERAL INFORMATION

This tank has a smooth interior wall and "V" shaped bottom for easy cleaning.

WEIGHTS AND MEASURES

» Capacity:	500 BBL (21,000 gal.)
» Height:	10'-1" (grade to roof plate) 13'-0" (grade to top of P/V valve)
» Width :	8'-6"
» Length:	47'-3" (overall) 43'-4" (tank only)
» Weight:	34,000 lbs.

STRUCTURAL DESIGN

» Floor:	¼" thick A36 carbon steel, "V" bottom
» Sides/Ends:	¼" thick ASTM A36 carbon steel
» Roof Deck:	¼" thick ASTM A36 carbon steel
» Wall Frame:	4"x4"x3/8" structural tubing
» Roof Frame:	3" carbon steel C-channel

FEATURES

» Valves:	Butterfly valves - (2) Front & (1) Rear
» Relief Valve:	16 oz./in ² pressure setting, 0.4 oz./in ² vacuum setting; Buna-N seal
» Rear Drain:	4" flanged butterfly valve @ floor level with remote handle, bullnose plug and chain
» Front Drain:	4" flanged butterfly valve @ floor level with bullnose plug and chain

FEATURES – cont.

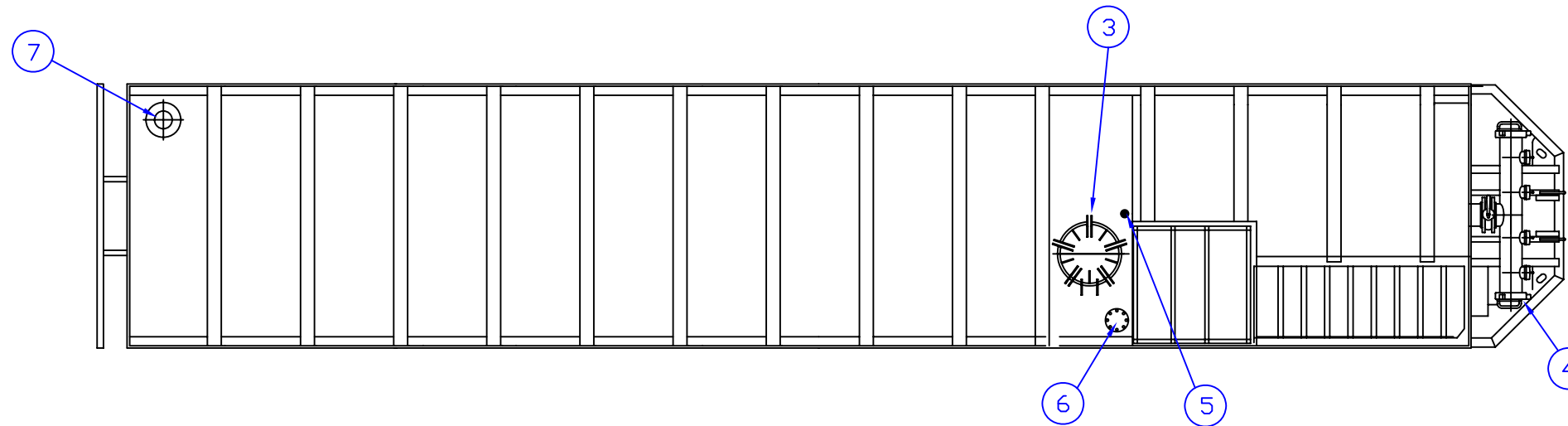
» Manifold:	Optional. 8" flanged nozzle (blinded) available on front of tank for manifold
» Fill Line:	3" stub through roof; 4" on front.
» Gel Line:	4" flanged butterfly valve on driver side, approx. 36" from floor. Gel line made of sch. 80 PVC and is removable.
» Vent Connection:	4" flanged nozzle with blind, next to top manway, passenger side
» Top Manway:	22" diameter with anti-personnel bars
» Front Manway:	22" diameter opening
» Side Manway:	22" diameter opening
» Stairway:	Front of tank, passenger side; fold-down guardrail and handrail system
» Level Gauge:	Ball float style with pointer
» Tires/Wheels:	11.00 x 22.5 Nylon tubeless/10 hole Budd

SURFACE DETAILS

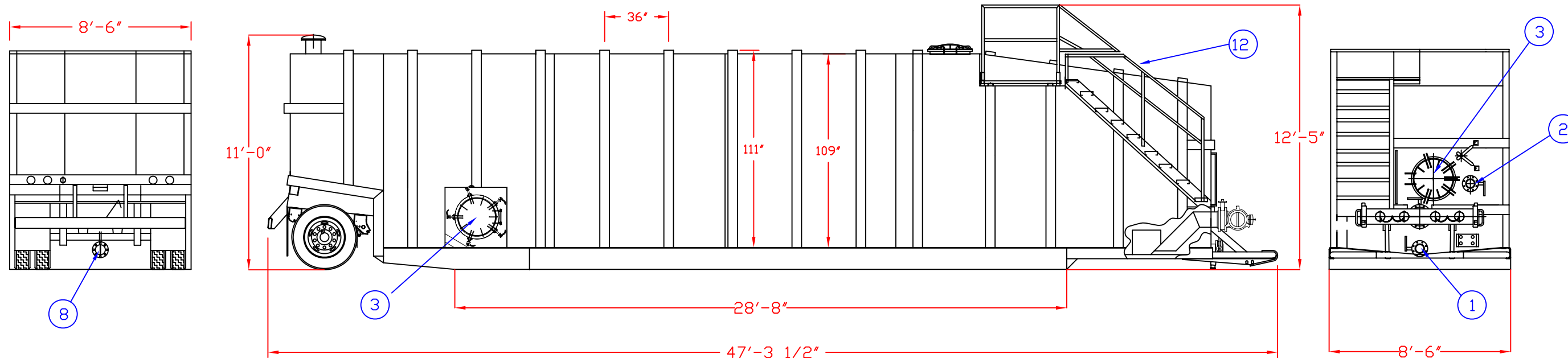
» Exterior Coating:	High gloss polyurethane
» Interior Coating:	Chemical resistant lining
» Safety Paint:	On stairs, handrails, hatch covers and trip hazard surfaces

TESTS/CERTIFICATIONS

» Test Performed:	Hydrostatic water test after construction and major repairs; Level I, II and III OMS inspections on a scheduled basis.
-------------------	--



ITEM	QTY	DESCRIPTION
1	1	FRONT DRAIN ASSY 4"W/BUTTER FLY VALVE & NOZZLE
2	1	GEL LINE, REMOVABLE
3	3	MANWAY 22" 3 SIDED, W/DOME LID & HANDLE NUTS
4	1	DRAIN ASSEMBLY 4"W/BUTTER FLY VALVE & NOZZLE
5	1	2" COUPLING, 3000#
6	1	4" FLANGED CONNECTION
7	1	PRESSURE / VACUUM RELIEF VALVE
8	1	REAR DRAIN ASSY 4"W/BUTTERFLY VALVE & NOZZLE



SPECIFICATIONS:

- 1) Tank Capacity: 21,000 gallons (500 BBL)
- 2) Tank Weight: 34,100 lbs. (empty)

NOTES:

1. This drawing is a baseline representation for this model of tank. Variations between this drawing and the actual equipment in the field can and do exist, primarily with appurtenance locations, sizes and quantities. Consult your local BakerCorp representative if specific needs exist.
2. THIS TANK IS **NOT DESIGNED FOR TRANSPORTING LIQUIDS**. It should be moved only when empty.
3. Tanks of this type have an internal lining (coating) on the wetted surfaces.
4. This tank is equipped with a pressure/vacuum relief valve set at 1.0 lbs/sq. in. pressure and 0.4 oz/sq.in. vacuum.

The information contained herein is proprietary to Baker Tanks and shall not be reproduced or disclosed in whole or in part, or used for any design or manufacture except when user obtains direct written authorization from Baker Tanks.

BAKERCORP™ 3020 OLD RANCH PARKWAY
SEAL BEACH, CA 90740-2751

G				SCALE:	—	SIZE	B	ORIGINAL DWG. DATE	07FEB05
F				DRAWN BY:	P.J.B.	APPROVED BY:	—	CAT/CLASS	—
E				TITLE	V.E. ENTERPRISES "SMART STEP" FIXED AXLE TANK			SHEET	1 OF 1
D				DRAWING NO.	S-2-M0014-1-			REV.	A
C				REV.	DESCRIPTION	DATE	BY		