

**PRODUCT DATA SHEET**

December, 2007

**450 BBL FIXED AXLE  
(WADE SINGLE WALL)**

**GENERAL INFORMATION**

This tank has a smooth interior wall and round bottom for easy cleaning.

**WEIGHTS AND MEASURES**

» Capacity:	.....	450 BBL (18,900 gal.)
» Height:	.....	9'-7" (grade to top of tank roof steel) 13'-1" (grade to handrails in upright position)
» Width:	.....	8'-0"
» Length:	.....	46'-10" (overall w/o manifold) 48'-1" (overall w/manifold) 42'-11" (tank only)
» Weight:	.....	25,600 lbs.

**STRUCTURAL DESIGN**

» Floor:	.....	1/4" ASTM A36 carbon steel
» Sides/Ends:	.....	1/4" ASTM A36 carbon steel
» Roof Deck:	.....	1/4" ASTM A36 carbon steel
» Wall / Roof Frame:	.....	5 1/4" x 3 1/4" formed channel (steel)

**FEATURES**

» Valves:	.....	(2) Front & (1) Rear: 4" wafer butterfly valve, Buna-N; (1) 8" wafer butterfly valve on manifold connection.
» Relief Valve:	.....	16 oz./in <sup>2</sup> pressure setting, 0.4 oz./in <sup>2</sup> vacuum setting; Buna-N seal
» Manifold:	.....	Some are equipped with 8" incl. (4) 3" threaded collars, plugged & chained
» Fill Line:	.....	3" stub at rear, top, driver side
» Overflow:	.....	3" collar on front & rear walls

**FEATURES – cont.**

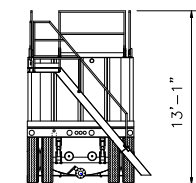
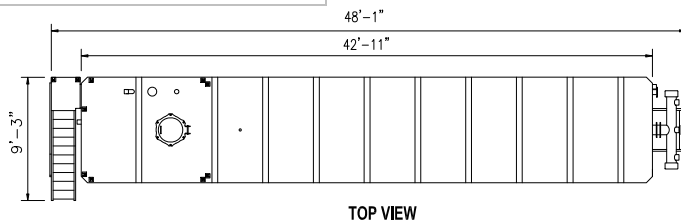
» Drains:	.....	Two (2) – 4" at center of tank, front/rear
» Misc. Piping Connections:	.....	One (1) – 4" top vent (blinded)
» Manways:	.....	Three (3) – 22" round manways on front, side & top, made of flat 1/2" flat plate with 5/8" bolts and nuts.
» Manway Seals:	.....	1/2" x 1/2" square Buna-N spliced ring
» Walkway:	.....	None
» Stairway:	.....	At rear of tank with OSHA handrail
» Guardrails:	.....	Self locking, 1 1/4" square tubing on top of tank
» Internal Ladder:	.....	None
» Level Gauge:	.....	Ball float style, 2-8" 304 SS floats
» Tires:	.....	11R x 22.5

**SURFACE DETAILS**

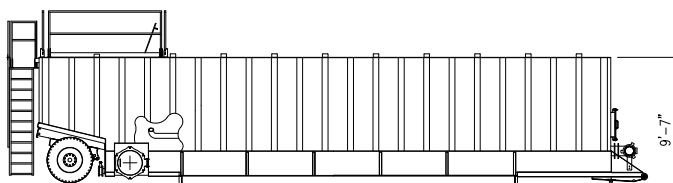
» Exterior Coating:	.....	High gloss polyurethane
» Interior Coating:	.....	Chemical resistant lining
» Safety Paint:	.....	On stairs, handrails, top safety rails and top hatches

**TESTS/CERTIFICATIONS**

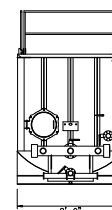
» Test Performed:	.....	3 psi air test; Scheduled Level I, II and III QMS inspections
-------------------	-------	---



REAR VIEW



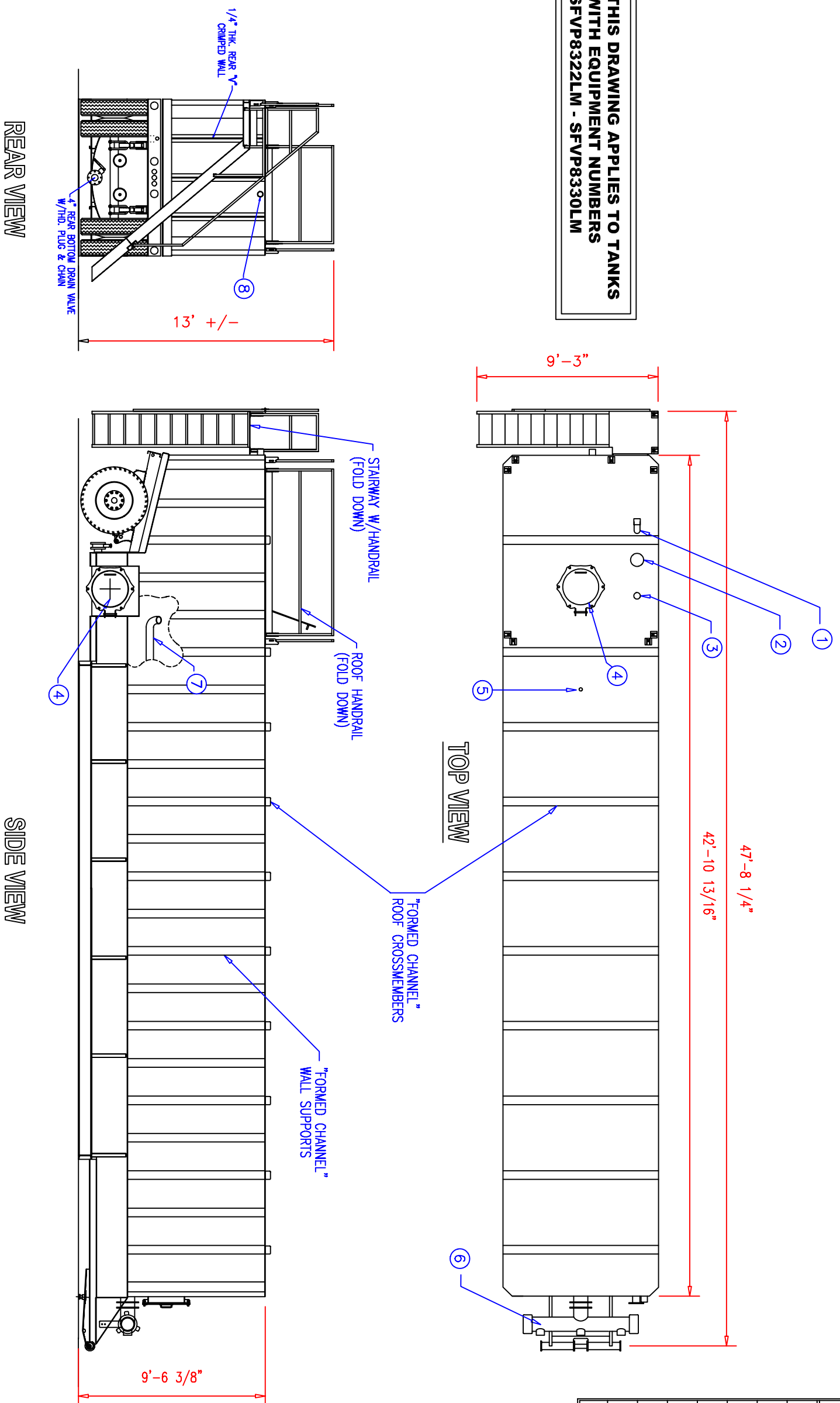
SIDE VIEW



FRONT VIEW

To the best of our knowledge the technical data contained herein are true and accurate at the date of issuance and are subject to change without prior notice. No guarantee of accuracy is given or implied because variations can and do exist. NO WARRANTY OR GUARANTEE OF ANY KIND IS MADE BY BAKERCORP, EITHER EXPRESSED OR IMPLIED.

**THIS DRAWING APPLIES TO TANKS WITH EQUIPMENT NUMBERS SFVP8322LM - SFVP8330LM**



ITEM	QTY	DESCRIPTION
1	1	3" 90 deg. ell with cap and chain (Fill)
2	1	Press. (16 oz/sq.in.)/Vac. (0.4 oz/sq.in.) vent valve
3	1	4" Blind flange (vapor recovery conn.)
4	3	22" Manway with Bung-N gasket
5	1	2" Coupling with plug
6	1	8" Manifold w/(3) 4" thd. collars w/ plug & chain
7	1	4" Gel line w/ inlet butterfly valve & 45 deg. outlet
8	1	3" Overflow with thd. cap & chain

**SPECIFICATIONS:**  
 1) TANK CAPACITY: 18,900 GAL (450 BBL.)

**NOTES:**

- THIS DRAWING IS A BASELINE REPRESENTATION FOR THIS MODEL TANK. VARIATIONS BETWEEN THE DRAWING AND THE ACTUAL EQUIPMENT IN THE FIELD CAN AND DO EXIST, PRIMARILY WITH APPURTENANCE LOCATIONS, SIZES AND QUANTITIES. CONSULT YOUR LOCAL BAKER REPRESENTATIVE IF SPECIFIC NEEDS EXIST.
- THIS TANK IS TO BE TRANSPORTED WHILE EMPTY ONLY. IT IS NOT DESIGNED TO TRANSPORT LOADS.
- MOST TANKS OF THIS TYPE HAVE AN INTERNAL LINING (COATING).

The information contained herein is proprietary to Baker Tanks and shall not be reproduced or disclosed in whole or in part, or used for any design or manufacture except when user obtains direct written authorization from Baker Tanks.



3020 OLD RANCH PARKWAY  
 SEAL BEACH, CA 90740-2751

SCALE: Do Not Scale	SIZE: B	ORIGINAL DWG. DATE: 17SEP02
DRAWN BY: P.J.B.	APPROVED BY: -	CAT/CLASS: 110-1250
TITLE: WADE SINGLE WALL FIXED AXLE TANK WITH GEL LINE & MANIFOLD	DRAWING NO.: S-2-M0010-1-	SHEET: 1 OF 1
REV. A: FIXED TEXT AND CUT-OUTS	DATE: 7/12/05	BY: Z.E.R.
REV. DESCRIPTION	DATE	BY