

### PRODUCT DATA SHEET

January, 2007

### 100 BBL OPEN TOP TANK

#### GENERAL INFORMATION

This skid-mounted tank is designed to provide easy viewing of the contents. Very economical tank for smaller jobs or where space is a premium.

#### WEIGHTS AND MEASURES

» Capacity:	.....	100 BBL. (4,200 gal.)
» Height:	.....	4'-4"
» Width :	.....	8'-0"
» Length:	.....	Tank only – 20'-0" Skid to skid – 21'-6"
» Weight:	.....	5,000 lbs.

#### STRUCTURAL DESIGN

» Floor:	.....	¼" thick ASTM A36 carbon steel
» Sides/Ends:	.....	¼" thick ASTM A36 carbon steel (smooth walls on exterior side, structural framing on inside)
» Wall Frame:	.....	Structural steel inside tank
» Floor Frame:	.....	Structural steel under the floor
» Internal Cross Bracing:	.....	(3) – structural steel angle iron

#### FEATURES

» Manifold:	.....	None
» Valves:	.....	2-4" gate valves, one on each end of tank
» Interior Access:	.....	The tank is open on top
» Ladders:	.....	One inside, one outside, on same end of tank
» Level Gauge:	.....	None

#### SURFACE DETAILS

» Exterior Coating:	.....	High Gloss Polyurethane
» Interior Coating:	.....	None
» Safety Paint:	.....	None
» Placard Mounts:	.....	None

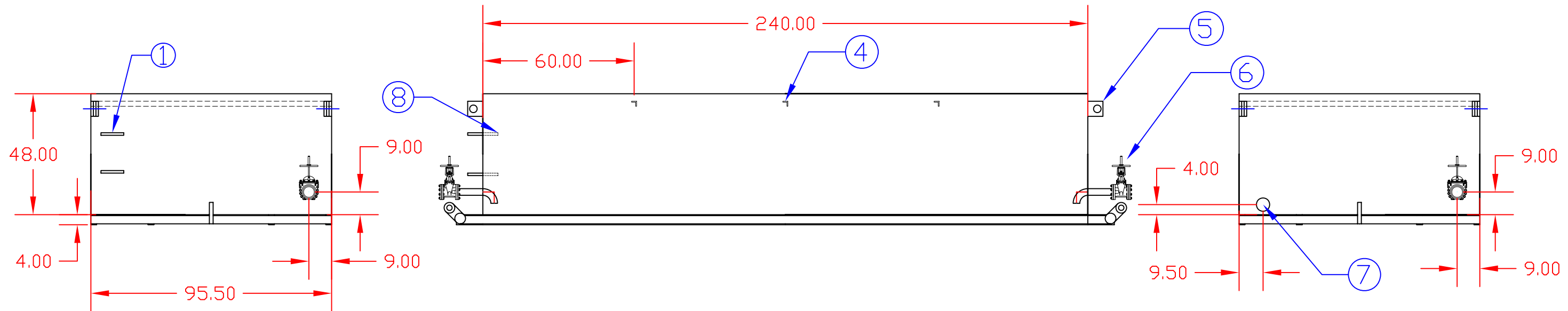
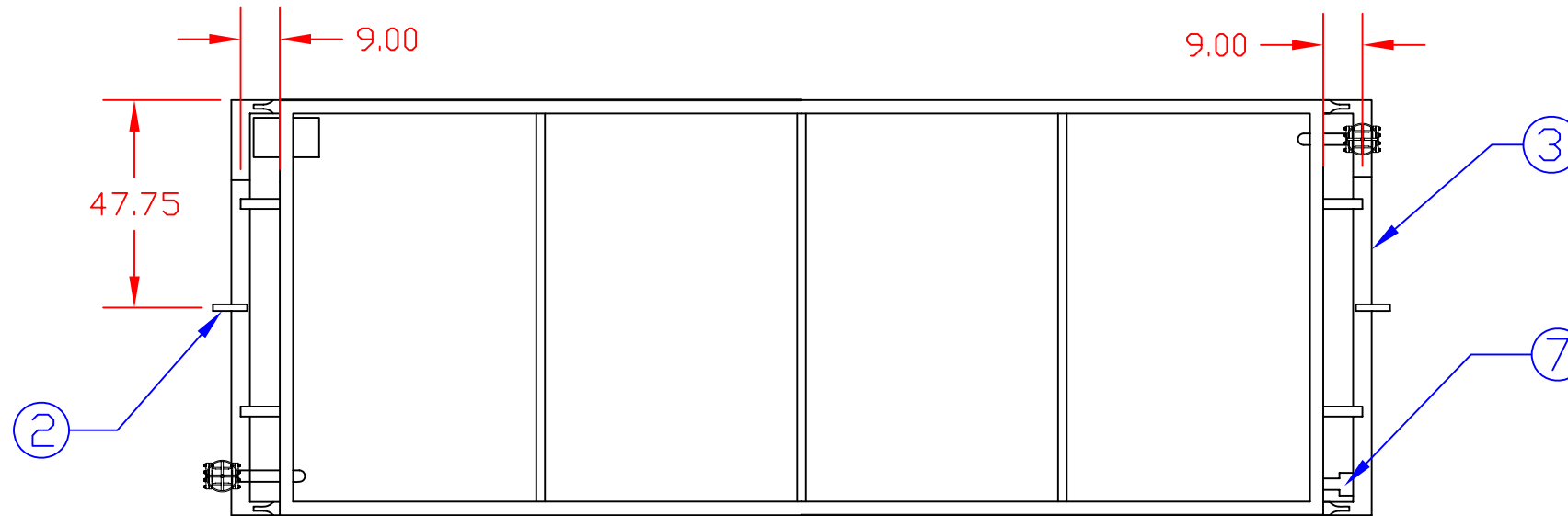
#### TESTS/CERTIFICATIONS

» Test Performed:	.....	Major repairs – hydrotest Scheduled- Level I, II and III inspections
-------------------	-------	---



To the best of our knowledge the technical data contained herein are true and accurate at the date of issuance and are subject to change without prior notice. No guarantee of accuracy is given or implied because variations can and do exist. NO WARRANTY OR GUARANTEE OF ANY KIND IS MADE BY BAKERCORP, EITHER EXPRESSED OR IMPLIED.

ITEM	QTY	DESCRIPTION
1	1	External ladder
2	2	Loading Eyes
3	2	Pipe Bumper
4	3	Internal Cross Ties
5	4	Lifting Lugs
6	2	4" Gate Valve
7	1	4" Capped Nipple
8	1	Internal Ladder



**SPECIFICATIONS:**

- 1) Nominal Tank Capacity: 4,200 gallons (100 BBL)
- 2) Tank Weight: 5,000 lbs. (empty)

**NOTES:**

- 1. This drawing is a baseline representation for this model of tank. Variations between this drawing and the actual equipment in the field can and do exist, primarily with appurtenance locations, sizes and quantities. Consult your local BakerCorp representative if specific needs exist.
- 2. This tank is to be transported while empty only. It is not designed to transport loads.

<p>The information contained herein is proprietary to BakerCorp and shall not be reproduced or disclosed in whole or in part, or used for any design or manufacture except when user obtains direct written authorization from BakerCorp.</p>				3020 OLD RANCH PARKWAY SEAL BEACH, CA 90740-2751		
G				SCALE:	SIZE <b>B</b>	ORIGINAL DWG. DATE 15July05
F				DRAWN BY: Z.E.R	APPROVED BY: P.J.B	CAT/CLASS -
E				TITLE 100 BBL EZ CLEAN OPEN TOP TANK		SHEET 1 OF 1
D				DRAWING NO. <b>S-1-M0013-1-</b>		REV. <b>A</b>
C						
B						
A	Added specs & notes	2/6/07	PJB			
REV.	DESCRIPTION	DATE	BY			