

PRODUCT DATA SHEET

January, 2007

YARDNEY 3-POD SAND FILTER SYSTEM (IL3024-3AS)

GENERAL INFORMATION

Skid mounted sand media filters [3 tanks (pods)] with automatic backwashing designed for general-purpose water filtration of organic and inorganic solids. Powered by 120 V external power supply.

WEIGHTS AND MEASURES

» Capacity:	110 – 221 gpm (Normal flow range) 295 gpm (Peak flow)
» Design Pressure:	100 psi maximum
» Temperature:	Limit to ambient. Consult Baker if temperature exceeds 100 degrees.
» Filtration:	Down to 20 - 50 microns
» Height:	6'-3" (overall)
» Width:	3'-10" (skid rail to skid rail)
» Length:	12'-10" (overall); 12'-3" (skid)
» Weight:	2,325 lbs. – equipment only 2,700 lbs. – media only 6,525 lbs. – operational
» Backflush:	74 gpm, automatic

OPERATING REQUIREMENTS

» Compressed Air:	5 cfm minimum at 60 psi
» Sand Media:	Crushed silica, 0.47MM (#80 grit); 7 cu. ft. per vessel
» Gravel Media:	#3 crushed rock, ½" x ¾"; 2.5 cu. ft. per vessel
» Input Power:	120 V AC (customer supplied)

FEATURES

» System Controller:	Automatic Filter Controller. Flush activation based on elapsed time and/or pressure differential.
» Piping:	Inlet & outlet pipe is 4" A53B; weld fittings are A234; flanges are A106. Backflush piping is 2" schedule 40 PVC.

FEATURES – cont

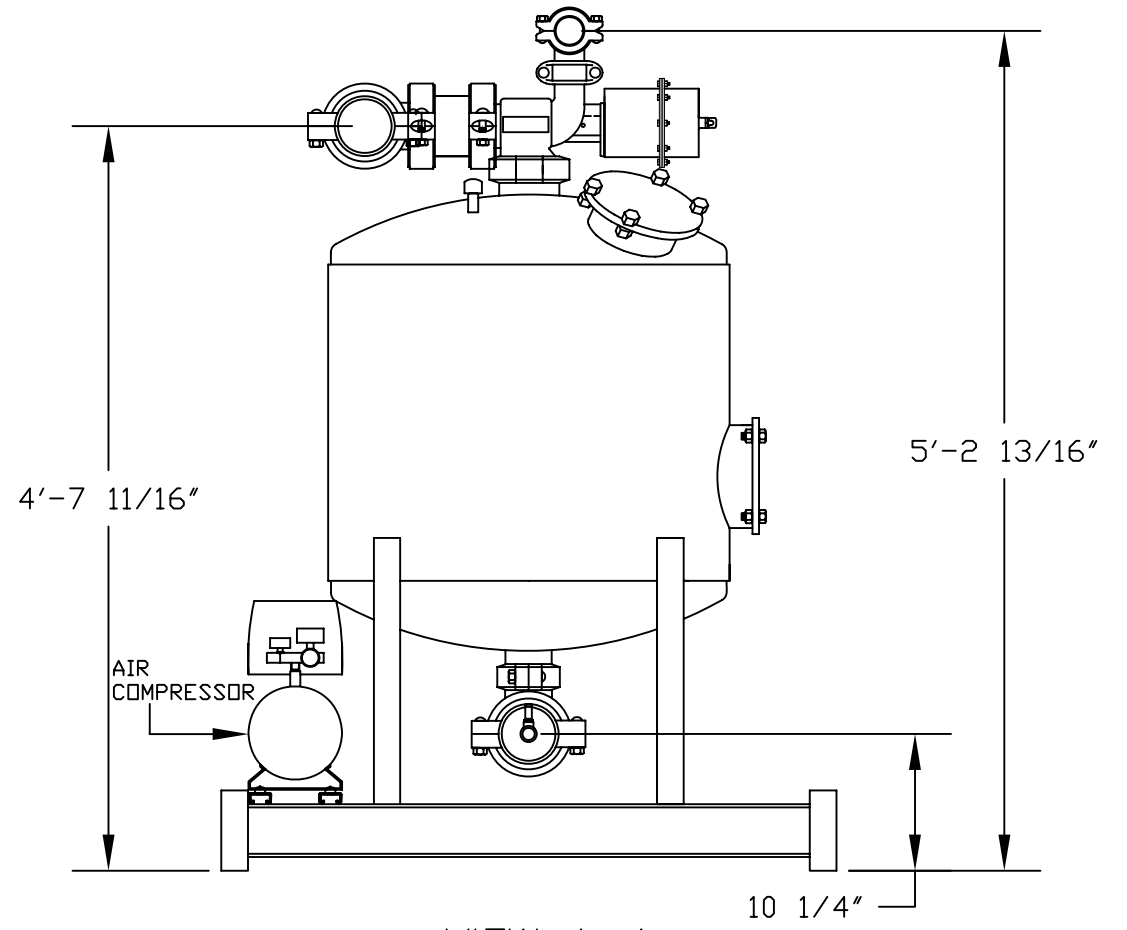
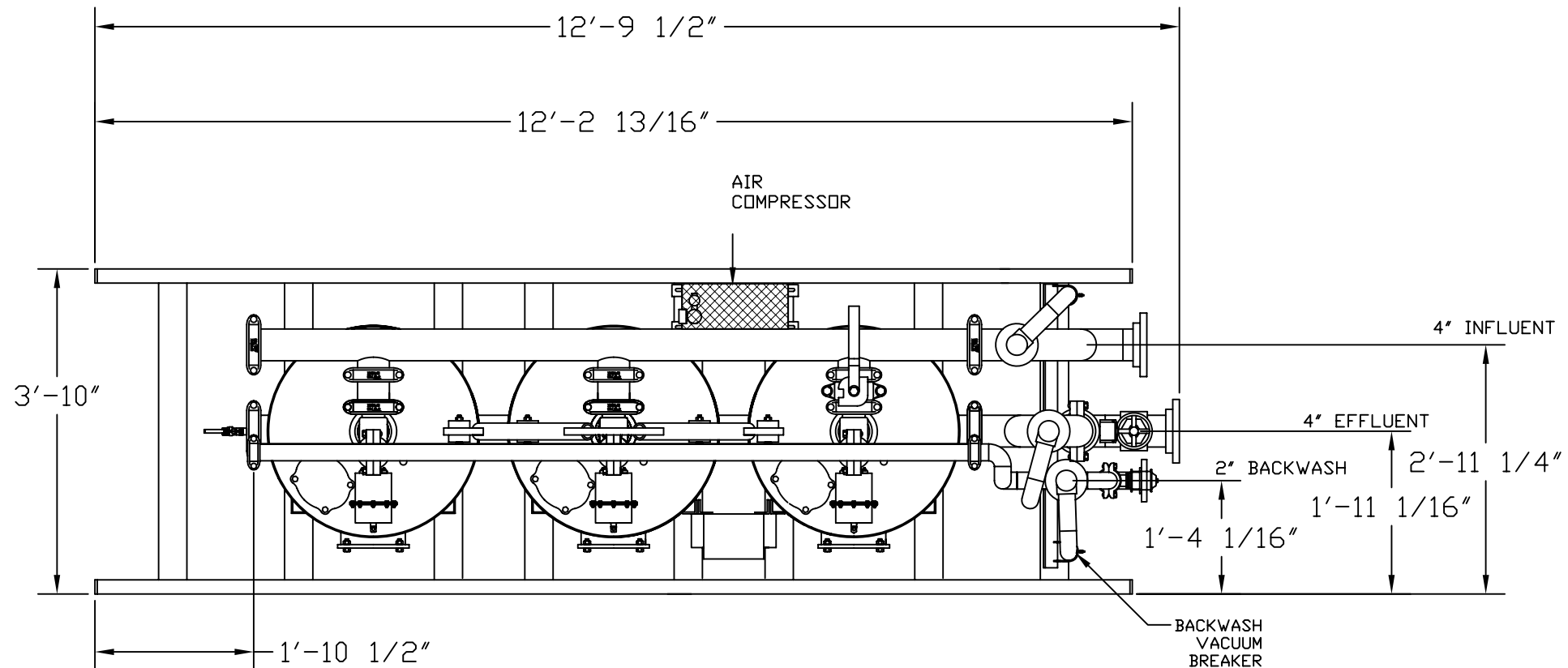
» Press. Gauge:	2" face, ¼" NPT bottom connection, stainless steel case, plexiglass lens, brass bourdon tube, 0-100 psi range.
» Flowmeter:	Four-inch propeller type meter, AWWA C704-92 compliant. Instantaneous flowrate indicator and six-digit totalizer. Accuracy is ±2% of reading. Repeatability of 0.25%. Tube: epoxy-coated carbon steel; Impeller: high-impact plastic.
» Butterfly Valves:	<u>Effluent / Influent:</u> 4" with cast iron body (epoxy coated), EPDM seat, 304 SS stem and aluminum bronze disc. <u>Tank Isolation:</u> 3", grooved ends, EPDM disc coating
» Differential Pressure Switch:	0-30 psid. Two-inch dial, plated steel case, ±3% accuracy.
» Air / Vacuum Release Valve:	2" valve, mounted on backwash, influent and effluent lines
» Tubing:	Pressurized – ¼" 304 ss w/ Hoke fittings; Drain - ¼" polypropylene; Vent – schedule 80 PVC

SURFACE DETAILS

» Interior Coating:	3M Scotchkote 134
» Exterior Coating:	High Gloss Polyurethane

TESTS/CERTIFICATIONS

» Tests Performed:	OEM pressure tested. BakerCorp performs scheduled OMS inspections.
--------------------	-------	--



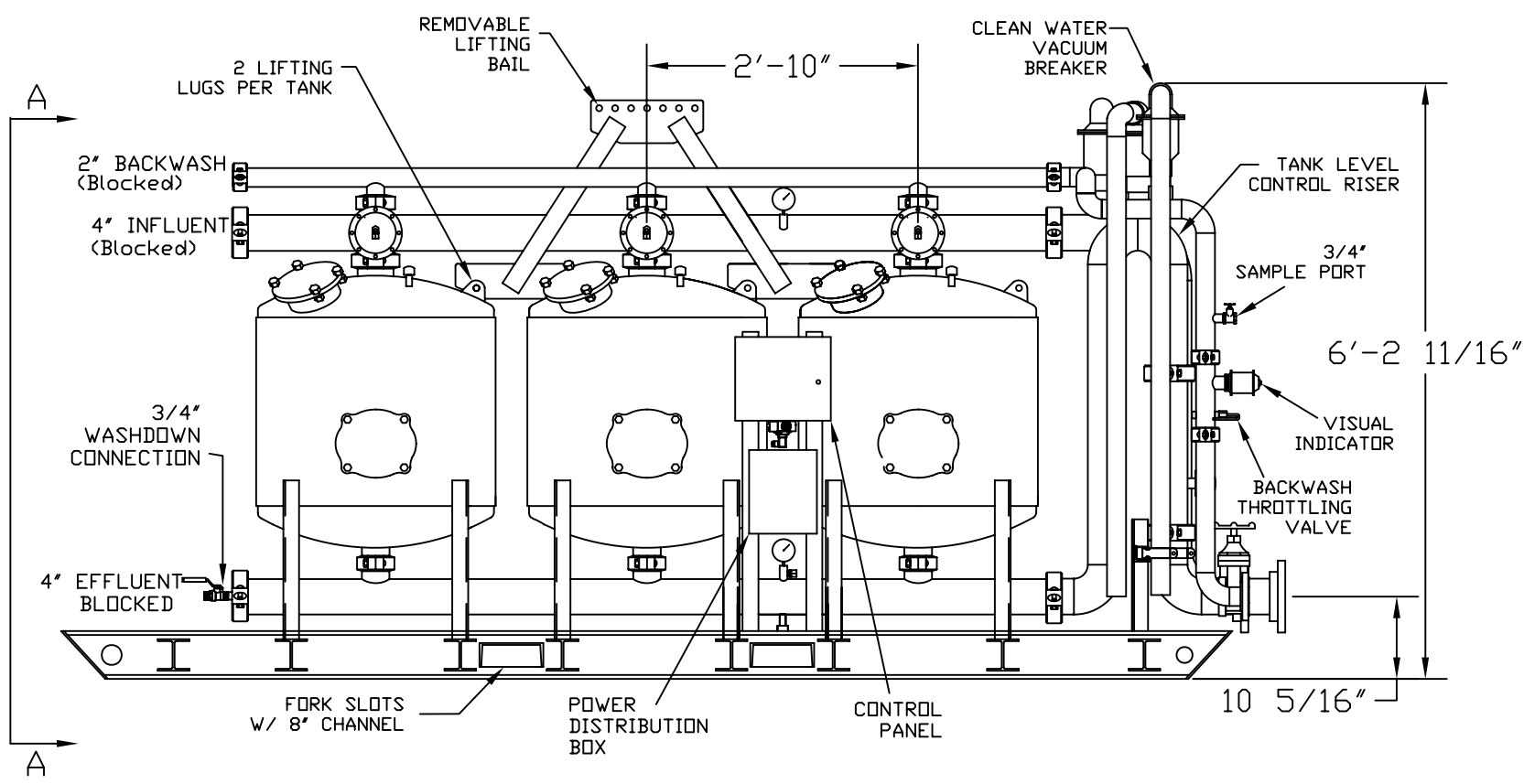
VIEW A-A

IL 3024-3AS

- NOTES:
1. FLOW RATE DESIGN - 110-221 GPM
BACKWASH RATE - 15 GPM / FT², 74 GPM
 2. MAXIMUM WORKING PRESSURE - 100 PSI.
 3. ELECTRICAL:
 - CONTROLLER 120V / 1A; 12VDC SDV's
 - CONTROLLER 120V / 5A
 4. MEDIA REQUIREMENT PER TANK:
 - A. 1/2"x3/4" CRUSHED ROCK - 2.5 CU. FT.
 - B. 0.47mm CRUSHED SILICA SAND - 7.0 CU. FT.
 5. WEIGHT: (APPROX.)
 - SHIPPING - 2,325 LBS (LESS MEDIA)
 - MEDIA - 2,700 LBS
 - OPERATION - 6,525 LBS
 6. PNEUMATICALLY ACTUATED VALVES W/ SS TUBE
 7. STEEL CONDUIT
 8. TUBE TANK VENT VALVES TO GROUND

NOTES:

1. THIS DRAWING IS A BASELINE REPRESENTATION FOR THIS SIZE SKID. VARIATIONS BETWEEN THIS DRAWING AND THE ACTUAL EQUIPMENT IN THE FIELD MAY EXIST, PRIMARILY WITH APPURTENANCES. CONSULT YOUR LOCAL BAKER REPRESENTATIVE IF SPECIFIC NEEDS EXIST.



The information contained herein is proprietary to BakerCorp and shall not be reproduced or disclosed in whole or in part, or used for any design or manufacture except when user obtains direct written authorization from BakerCorp.

BAKERCORP 3020 OLD RANCH PARKWAY
SEAL BEACH, CA 90740-2751

G				SCALE:	SIZE	ORIGINAL DWG. DATE
F				Do Not Scale	B	31MAY05
E				DRAWN BY:	APPROVED BY:	CAT/CLASS
D				P.J.B.	-	--
C				TITLE		SHEET
B				3-POD SAND FILTER SYSTEM		1 OF 1
A	FIXED TEXT ERROR	7/12/05	Z.E.R.	DRAWING NO.		REV.
REV.	DESCRIPTION	DATE	BY	S-9-M0021-1-		A