

PRODUCT DATA SHEET

January, 2007

BAKER MIX TANK

GENERAL INFORMATION

This tank is a modified Safety Vapor Tank.

WEIGHTS AND MEASURES

» Capacity:	425 BBL (17,850 gallons)
» Height:	10'-11" (grade to roof deck) 12'-5" (grade to top of motor/gearbox)
» Width :	8'-0"
» Length:	35'-0" (end wall to end wall) 37'-6" (front wall to rear stairs)
» Weight:	29,000 lbs. (approx.)

STRUCTURAL DESIGN

» Floor:	¼" thick ASTM A36 carbon steel (flat bottom)
» Sides/Ends:	¼" thick ASTM A36 carbon steel
» Roof Deck:	¼" thick ASTM A36 carbon steel
» Wall Frame:	Structural steel channel/angle on interior side
» Floor Frame:	6" carbon steel I-beam
» Roof Frame:	4" steel channel
» Int. Cross-ties:	15 - 3"x3"x1 ¼" angle iron

FEATURES

» Manways:	Typically do not have side manways
» Exterior Stairway:	Rear end of tank. Lower section folds for extension and retraction
» Interior Access Hatches:	Two marine-style 50"x32" hinged vapor-proof doors on roof with neoprene gaskets
» Internal Ladder:	One at rear (stairway end) top access hatch
» Level Indication:	8" S.S. ball float(s) on arm with indicator needle on front of tank
» Relief Valve:	16 oz./in ² pressure setting, 0.4 oz./in ² vacuum setting; Buna-N seal
» Valves (std.): (Note: Some tanks vary from std.)	1-Front & 1-Rear: 4" wafer butterfly valve. Cast iron body, Buna-N seat & seals, 316 SS stem, Nylon 11 coated ductile iron disk w/ plug and chain.
» Total Drain:	Min. 4"-150# flanged nozzle and butterfly valve, front end, curb side
» Bottom Sump:	Some are equipped with either: Type 1: flat bottom, 12" diameter, 3" deep Type 2: domed, 14" diameter, 4" deep

FEATURES – cont.

» Electric Motors:	Four 10-hp., 215 frame, 480 volts, 60 HZ, 3-phase, 1800 RPM, EPFC enclosure 40°C
» Gearboxes:	SEW Eurodrive type KF87, reduction ratio ≈25:1 (Output speed: 70-72 RPM).
» Gearbox Lubrication:	Viscosity @ 104°F (40°C): VG220 centistokes (cst) Mobilgear 630; Shell Omala Oil 220; Texaco Meropa 220; BP Energol GR-XP 220; Chevron Non-Leaded Gear Compound 220
» Mixer Shafts:	2- 118" long x 2-3/8" dia. steel shafts 2- 79" long x 2-3/8" dia. steel shafts
» Mixer Blades:	Long Blades: 3/8"x6"x18" (lower hub) Short Blades: 3/8"x6"x10" (upper hub) (One set of 4 long blades and one set of 4 short blades per each mixer shaft)
» Heating Coils:	Four-pass 3" sch. 80 serpentine pipe (3"-150# flanges) or multi-pass 2" sch. 40 header style
» Rear Wheels	Removable dolly (not a fixed axle)

SURFACE DETAILS

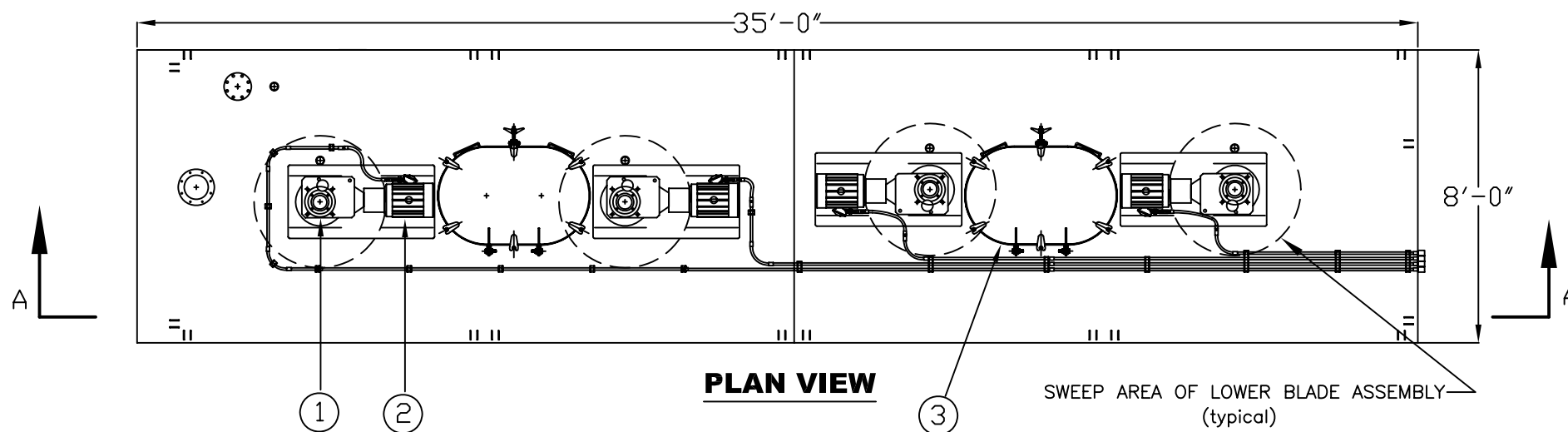
» Exterior Coating:	High Gloss Polyurethane
» Interior Coating:	None

ELECTRICAL SPECIFICATIONS

» Customer Feeder:	480-Volt ±5% 3-phase 3-wire protected with a min. of a 60-Amp circuit breaker and a max. of a 100-Amp circuit breaker. See decal on tank for circuit breaker coordination and fault circuit limits. Ground according to NEC article 250. Max #2 AWG 1 ¼" conduit.
» Motor Control:	Located under stairway on end wall of tank. Four motor controllers and individual circuit protection supplied. Some tanks have manual starters w/heaters and some tanks have NEMA Size 1 magnetic w/bi-metallic ambient compensated overloads.
» Classification:	This tank is designed for a maximum ambient temperature of 40°C. This tank is suitable for Class 1, Group D locations as long as 80% of the ignition temperature of the specified gas, vapor or dust to be encountered is greater than 280°C.

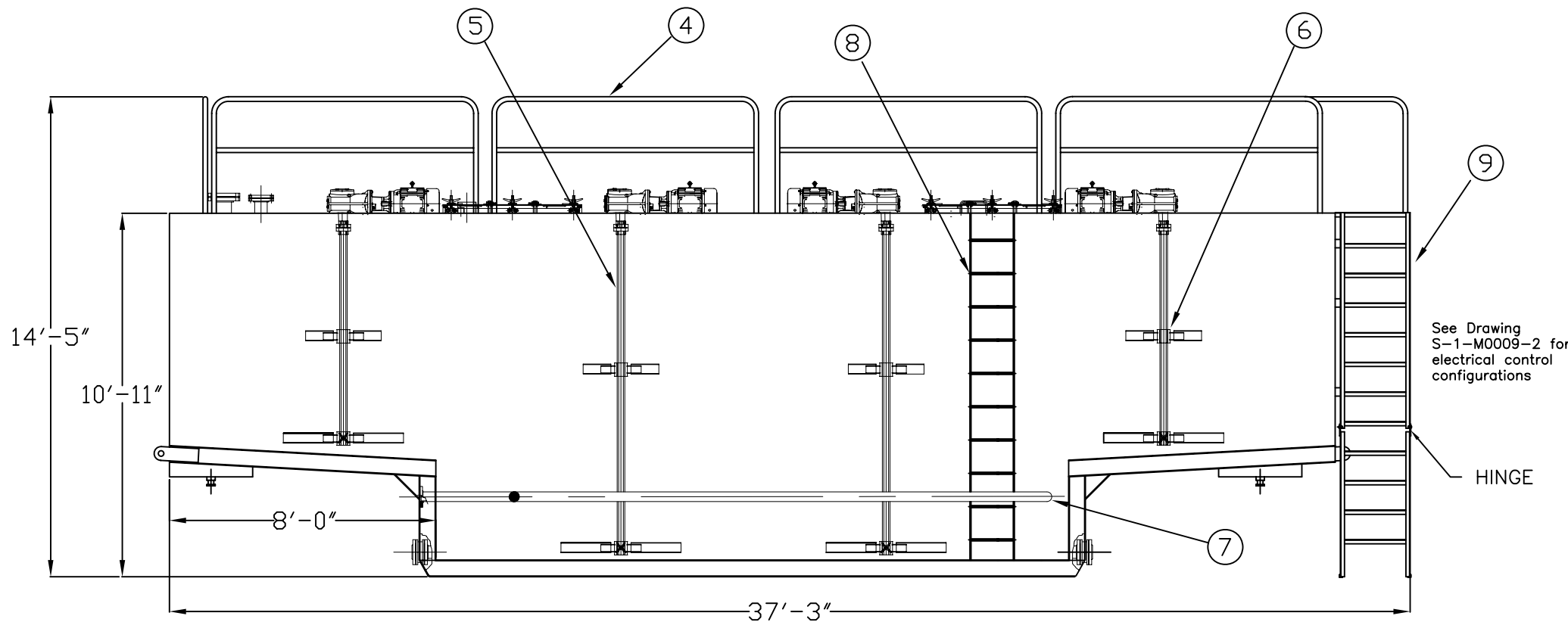
TESTS/CERTIFICATIONS

» Test Performed:	Hydrotest, electrical checks, and air pressure test of coil by mfr. Level I, II and III inspections on a scheduled basis by Baker.
-------------------	--



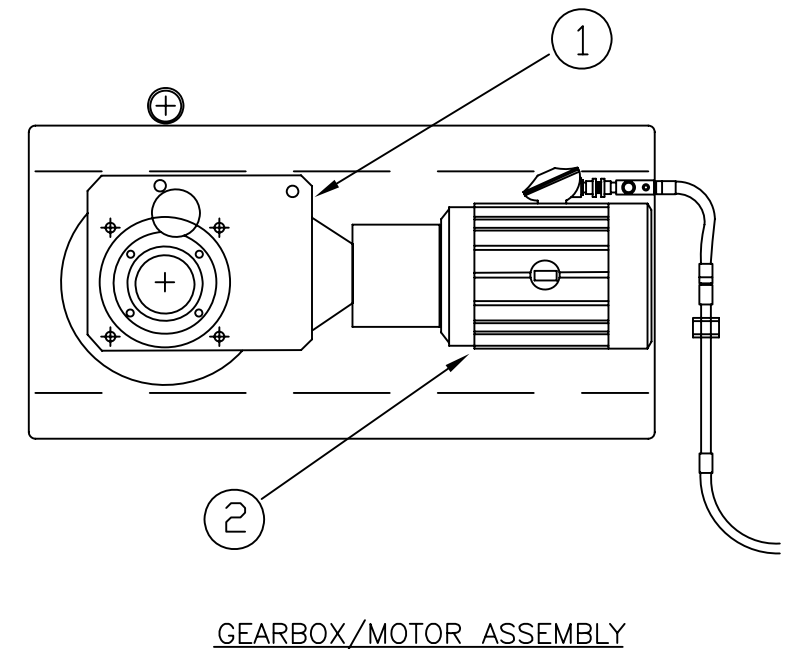
PLAN VIEW

SWEEP AREA OF LOWER BLADE ASSEMBLY (typical)



SECTION A-A

ITEM	QTY	DESCRIPTION
1	4	Speed Reduction Gearbox; 70 RPM Output Speed
2	4	10 h.p., 480 Volt, 3-phase, 1800 RPM Electric Motor
3	2	50"x32" Marine Style Hinged Access Hatch
4	-	Guardrails
5	2	118" Long Mixer Shaft, 10" & 18" Long Mix Blades
6	2	79" Long Mixer Shaft, 10" & 18" Long Mix Blades
7	1	Steam Coil
8	1	Internal Access Ladder
9	1	Exterior Stairway



GEARBOX/MOTOR ASSEMBLY

SPECIFICATIONS:

- 1) Tank Capacity: 17,850 gallons (425 BBL)
- 2) Tank Weight: 29,000 lbs. (empty)

NOTES:

- 1. This drawing is a baseline representation for this model of tank. Variations between this drawing and the actual equipment in the field can and do exist, primarily with appurtenance locations, sizes and quantities. Consult your local BakerCorp representative if specific needs exist.
- 2. **THIS TANK IS NOT DESIGNED FOR TRANSPORTING LIQUIDS.** It should be moved only when empty.
- 3. This tank is equipped with a pressure/vacuum relief valve set at 1.0 lbs/sq. in. pressure and 0.4 oz/sq.in. vacuum.
- 4. Customer is required to provide power: 480V, 3-phase, 3-wire protected with min. 60A circuit breaker and max. 100A breaker. See decal on tank for circuit breaker coordination and fault circuit limits. Ground according to NEC Article 250, Max #2 AWG 1-1/4" conduit.
- 5. See Drawing S-1-M0009-2 for electrical control configurations.

The information contained herein is proprietary to BakerCorp and shall not be reproduced or disclosed in whole or in part, or used for any design or manufacture except when user obtains direct written authorization from BakerCorp.				3020 OLD RANCH PARKWAY SEAL BEACH, CA 90740-2751		
G				SCALE: To Scale	SIZE B	ORIGINAL DWG. DATE 20JUN03
F				DRAWN BY: P.J.B.	APPROVED BY: -	CAT/CLASS --
E				TITLE BAKER STYLE MIX TANK		SHEET 1 OF 2
D				DRAWING NO. S-1-M0009-1-		REV. A
C						
B						
A	CHANGED SIDE VIEW TO SECTION A-A	7/12/05	Z.E.R			
REV.	DESCRIPTION	DATE	BY			