

PRODUCT DATA SHEET

January, 2007

WADE FIXED AXLE MIX TANK

GENERAL INFORMATION

This tank has a smooth interior wall for easy cleaning.

WEIGHTS AND MEASURES

» Capacity:	420 BBL (17,640 gallons)
» Height:	8'-11" (grade to roof deck) 12'-5" (grade to top of upright guardrails)
» Width :	8'-3½" (rib to rib); 8'-6" (between side runners)
» Length:	45'-10" (nose to tail) 42'-10" (end wall to end wall)
» Weight:	32,500 lbs.

STRUCTURAL DESIGN

» Floor:	¼" thick ASTM A36 carbon steel (round bottom)
» Sides/Ends:	¼" thick ASTM A36 carbon steel
» Top Deck:	¼" thick ASTM A36 carbon steel
» Wall Frame:	3/16"x3"x5" ASTM A36 formed channel
» Roof Frame:	3/16"x3"x5" ASTM A36 formed channel

FEATURES

» Relief Valve:	16 oz./in ² pressure setting, 0.4 oz./in ² vacuum setting; Buna-N seal
» Valves:	1-Front & 1-Rear: 4" wafer butterfly valve. Cast iron body, Buna-N seat & seals, 316 SS stem, Nylon 11 coated ductile iron disk w/ plug and chain. Remote operation handle for rear valve
» Rear Drain:	4"-150# flanged nozzle and butterfly valve
» Front Drain:	4"-150# flanged nozzle and butterfly valve
» Front Inlet:	6"-150# flanged nozzle (with blind flange)
» Top Fill Line:	3" 90° elbow with threaded nipple and cap, located on rear of tank
» Vapor Recov. Connection:	4"-150# weld neck flange with blind flange (chained)
» Supplemental Connections:	<u>Rear wall:</u> 1-4"-150# flanged & blinded nozzle and 1-4" pipe nipple with cap <u>Front wall:</u> 1-4" pipe nipple with cap (all located in rounded bottom section)
» Heating Coils:	3" sch. 80 pipe with 122 sq. ft. of surface area
» Thermowells: (optional)	2-¾" plugged coupling connections on front wall are provided for thermowell insertion

FEATURES – cont.

» Guardrails:	Top deck, fold-down, 1¼" x 1¼" square tubing
» Manways:	22" I.D.; ½" flat plate ASTM A36 steel with Buna-N gasketing; one on front of tank & one on passenger-side rear.
» Stairway:	Front-mounted stairway, passenger-side entry; fold-down bottom steps
» Top Access Hatches:	2-50" long x 32" wide hinged vapor-proof doors with neoprene gaskets
» Internal Ladder:	One; mounted below front-end top access hatch
» Level Indication:	Ball style with 2-8" 304 SS floats with pointer-indicator on front endwall. Floor supports hold floats ½" off floor. One 2" plugged connection for optional electronic gauge on top deck.
» Electric Motors:	Four Marathon 10 hp., type TGS, 215TC frame, 230/460 volts, 60 HZ, 3 phase, 1755 RPM, 25/12.5 F.L. amps, 1.0 service factor, EPFC enclosure, 60°C max. ambient temperature
» Gearboxes:	Model KAF87AM215TC, reduction ratio 24.92:1 (Input speed: 1744 RPM, Output speed: 70 RPM). 2-3/8" dia. output shaft
» Mixer Shafts:	4- 80" long x 2-3/8" diameter, ASTM
» Mixer Blades:	<u>Long (bottom) Blades:</u> 1/2" thk. X 6" wide x 17" long (41" swing path dia.) <u>Short (upper) Blades:</u> 1/2" thk. X 6" wide x 11-5/8" long (30-3/8" swing path dia.) One set of each per each mixer shaft. Material is ASTM A514. (Flow direction is downward)

SURFACE DETAILS

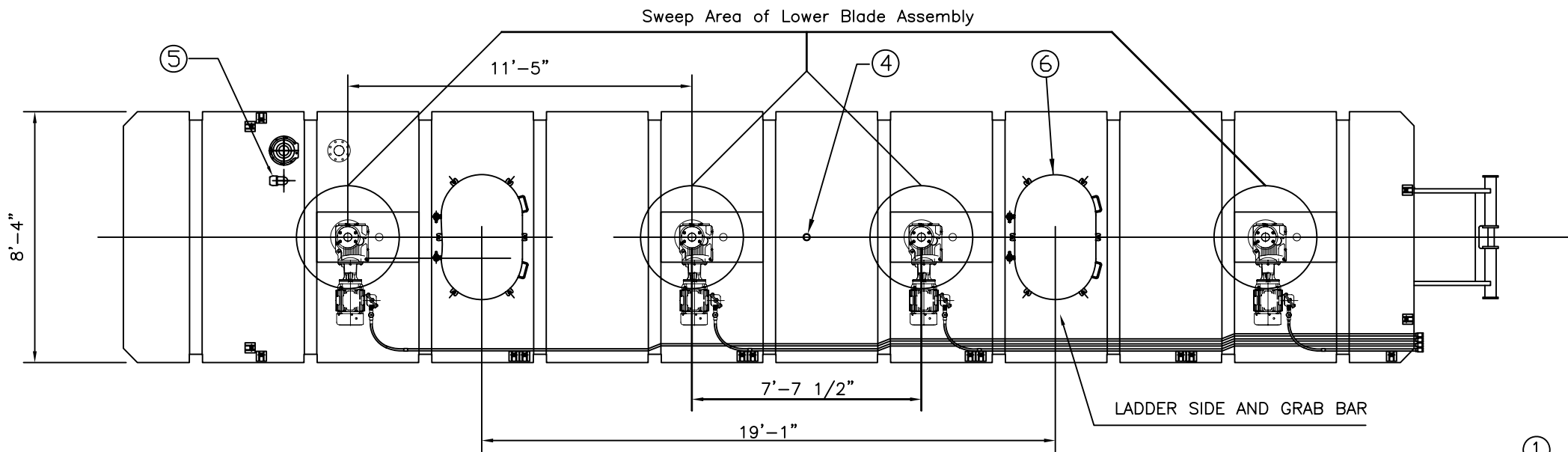
» Exterior Coating:	High gloss polyurethane
» Interior Coating:	None

ELECTRICAL SPECIFICATIONS

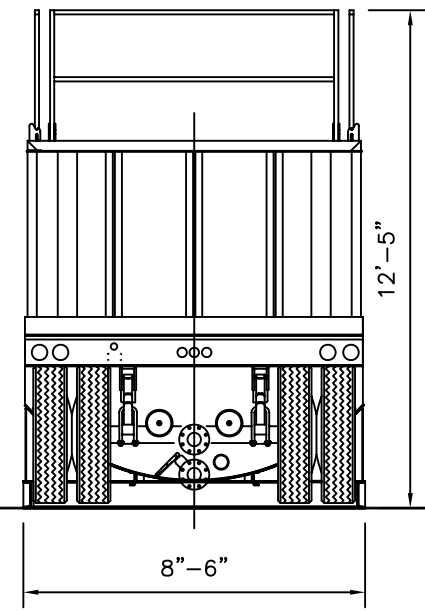
» Power Supply:	480V ±5%, 3-phase regulated voltage & current supply capable of supplying 60A min. (by customer)
» Motor Control:	NEC and OSHA compliant control panel on front wall of tank

TESTS/CERTIFICATIONS

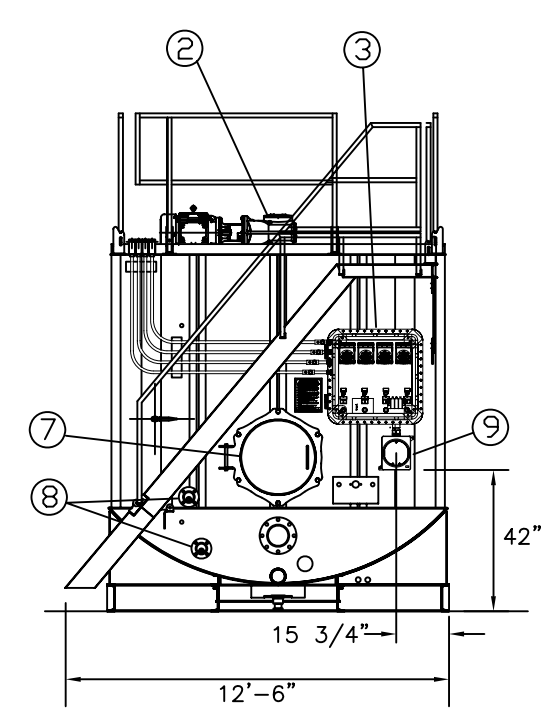
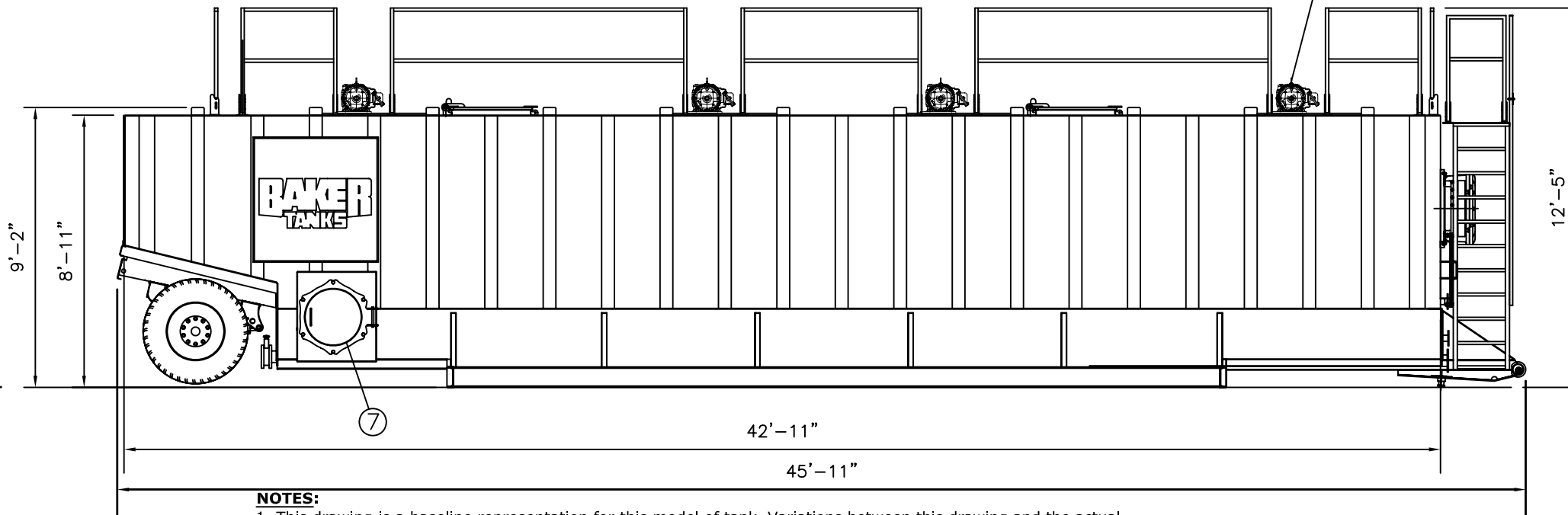
» Test Performed:	Hydrotest, electrical checks, and air pressure test of coil by mfr. Level I, II and III inspections on a scheduled basis by Baker.
-------------------	--



ITEM	QTY	DESCRIPTION
1	4	10 HP Electric Motor, EPFC Enclosure
2	4	1800 RPM to 70 RPM Speed Reducing Gearbox
3	1	NEC & OSHA Compliant Motor Control Panel
4	1	2" Collar w/plug (Gauging Port)
5	1	3" Fill Connection
6	2	Marine Style Access Hatch
7	2	22" Manway
8	2	3" Steam Coil Flanged Connection
9	1	Customer Power Supply Feed Connection
10	-	-



REAR VIEW



FRONT VIEW

NOTES:

- This drawing is a baseline representation for this model of tank. Variations between this drawing and the actual equipment in the field can and do exist, primarily with appurtenance locations, sizes and quantities. Consult your local BakerCorp representative if specific needs exist.
- THIS TANK IS NOT DESIGNED FOR TRANSPORTING LIQUIDS. It should be moved only when empty.
- This tank is equipped with a pressure/vacuum relief valve set at 1.0 lbs/sq. in. pressure and 0.4 oz/sq.in. vacuum.

SPECIFICATIONS

Overall Capacity: 420 BBL (17,640 gallons)

Weight: (empty): 32,460 lbs.

Mixer Assemblies: 4-80" long steel shafts, each fitted with two sets of mixer blades; upper blades have a 30-3/8" dia. rotation path, lower blades have a 41" dia. rotation path

IMPORTANT DESIGN & CUSTOMER WIRING SPECS

- THIS MIX TANK IS SUITABLE FOR CLASS I, GROUPS C & D AND CLASS II, GROUPS E, F & G LOCATIONS AS LONG AS 80% OF THE IGNITION TEMPERATURE OF THE SPECIFIC GAS, VAPOR OR DUST TO BE ENCOUNTERED IS GREATER THAN 165°C.
- ALL CUSTOMER WIRING SHALL COMPLY WITH THE NATIONAL ELECTRICAL CODE (NEC) AND ALL APPROPRIATE STANDARDS REQUIRED BY THE AUTHORITY HAVING JURISDICTION (AHJ).
- THE TANK WIRING IS DESIGNED FOR A MAXIMUM AMBIENT TEMPERATURE OF 60°C.
- THE CUSTOMER FEEDER SHALL BE 480-VOLT ±5%, 3-PHASE 3-WIRE PROTECTED WITH A MINIMUM OF A 60-AMP CIRCUIT BREAKER AND A MAXIMUM OF A 100-AMP CIRCUIT BREAKER.
- THE CUSTOMER SHALL SUPPLY A GROUND IN ACCORDANCE WITH THE NEC, ARTICLE 250.

- THE CUSTOMER FEEDER SHALL BE SIZED FOR AT LEAST 60-AMPS AT THE APPROPRIATE AMBIENT TEMPERATURE AND SHALL BE RATED AT 600-VOLTS.
- THE CUSTOMER FEEDER CONNECTION POINT CAN ACCOMMODATE A MAXIMUM OF A #2 AWG THWN COPPER FEEDER AND A 1 1/4" CONDUIT.
- THE CUSTOMER SHALL BE RESPONSIBLE FOR COORDINATING THE FEEDER CIRCUIT BREAKER WITH THE MOTOR CIRCUIT BREAKERS.
- THE MAXIMUM AVAILABLE FAULT CURRENT FROM THE CUSTOMER SHALL NOT EXCEED 18,000-AMPS.
- THE CUSTOMER SHALL BE RESPONSIBLE FOR VERIFYING THE PROPER PHASING SO MIX SHAFT ROTATION CAUSES DOWNWARD FLOW OF PRODUCT.

The information contained herein is proprietary to BakerCorp and shall not be reproduced or disclosed in whole or in part, or used for any design or manufacture except when user obtains direct written authorization from BakerCorp.

BAKERCORP 3020 OLD RANCH PARKWAY
SEAL BEACH, CA 90740-2751

G				SCALE:	SIZE	ORIGINAL DWG. DATE
F				To Scale	B	30MAY03
E				DRAWN BY:	APPROVED BY:	CAT/CLASS
D				P.J.B.	-	--
C				TITLE		SHEET
B	Added dimensions, Decal DCLMIX3 & wiring specs	7/6/06	P.J.B.	WADE FIXED AXLE MIX TANK		1 OF 1
A	Finished electrical system and lineweights	7/12/05	Z.E.R.	DRAWING NO.		REV.
REV.	DESCRIPTION	DATE	BY	S-2-M0012-1-		B