

PRODUCT DATA SHEET

January, 2007

MODERN FIXED AXLE TANK

("V" BOTTOM VERSION)

GENERAL INFORMATION

This tank has a smooth interior wall and "V" shaped bottom for easy cleaning.

WEIGHTS AND MEASURES

» Capacity:	500 BBL (21,000 gallons)
» Height:	10'-9" (grade to top of tank)
» Width :	8'-5"
» Length:	44'-10" (overall)
» Weight:	25,500 lbs.

STRUCTURAL DESIGN

» Floor:	¼" thick ASTM A36 carbon steel "V" bottom sloping from each side into the center
» Sides/Ends:	¼" thick ASTM A36 carbon steel
» Roof Deck:	¼" thick ASTM A36 carbon steel
» Wall Frame:	¼" thick ASTM A36 carbon steel channels (on exterior side of walls)
» Roof Frame:	¼" thick ASTM A36 carbon steel channels (on exterior side of walls)

FEATURES

» Valves:	2-Front & 1-Rear: 4"- wafer butterfly valve. Cast iron body, Buna-N seat & seals, 316 SS stem, Nylon 11 coated ductile iron disk w/ plug and chain. Remote operation handle for rear valve.
» Relief Valve:	16 oz./in ² pressure setting, 0.4 oz./in ² vacuum setting; Buna-N seal
» Rear Drain:	4"-150# tank-side weld neck flange mated to valve and 150# FPT flange
» Front Drain:	4"-150# tank-side weld neck flange mated to valve and 150# FPT flange
» Top Fill Line:	3" pipe, top of tank, with cap and chain

FEATURES – cont.

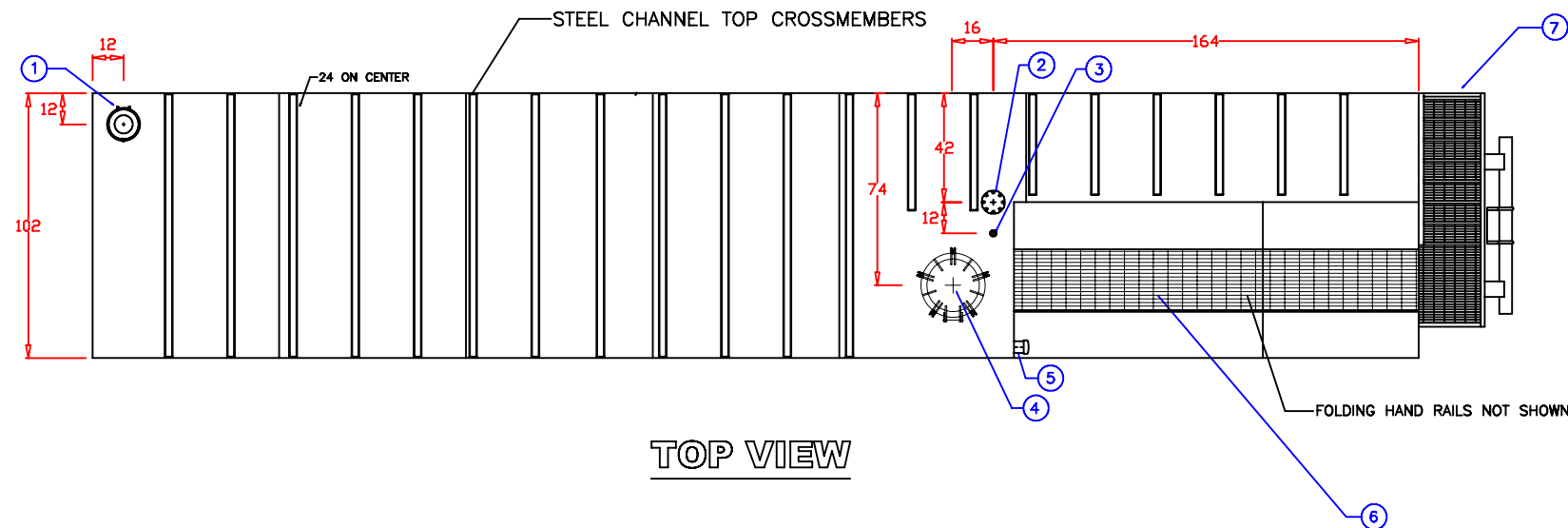
» Top Vapor Connection:	4"-150# weld neck flange with blind flange (chained) and Buna N gasket
» Top Manway:	22" I.D., slotted hinges and 5 - ¾" T or eye bolt with wing nut fasteners, hinged to side of tank, ½" flat plate or 3/8" if domed ASTM A36 steel. Buna N formed gasket, thermally fused.
» Front Manway:	22" I.D., slotted hinges and 5 - ¾" T or eye bolt with wing nut fasteners, hinged away from stairs, ½" flat plate or 3/8" if domed ASTM A36 steel. Buna N formed gasket, thermally fused.
» Side Manway:	22" I.D., slotted hinges and 5 - ¾" T or eye bolt with wing nut fasteners, mounted on passenger side and hinged to front of tank, ½" flat plate or 3/8" if domed ASTM A36 steel. Buna N formed gasket, thermally fused.
» Stairway:	Non-slip with handrails and guardrails; OSHA compliant
» Level Gauge:	Ball style with 2-8" 304 SS floats. Floor supports hold floats ½" off floor.
» Tires:	11.00 x 22.5 (nylon tubeless)
» Axles:	Standard 22,500#, Rockwell automatic slack adjusters, cast drum and hub, 30 service chambers, outboard drums

SURFACE DETAILS

» Exterior Coating:	High gloss polyurethane paint
» Interior Coating:	Chemical resistant lining
» Safety Paint:	Safety yellow – handrails, hatch covers and trip hazard surfaces
» Decal Mounts:	Removable 10-gauge steel, 48"x48", both sides of tank at top rear. Secured with nylock nuts or bolts with lock washers.

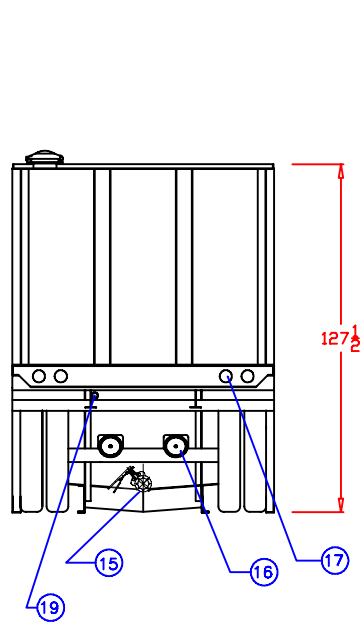
TESTS/CERTIFICATIONS

» Test Performed:	100% water tested to full capacity, 3 psi – 20 min test; Level I, II and III inspections on a scheduled basis
-------------------	---

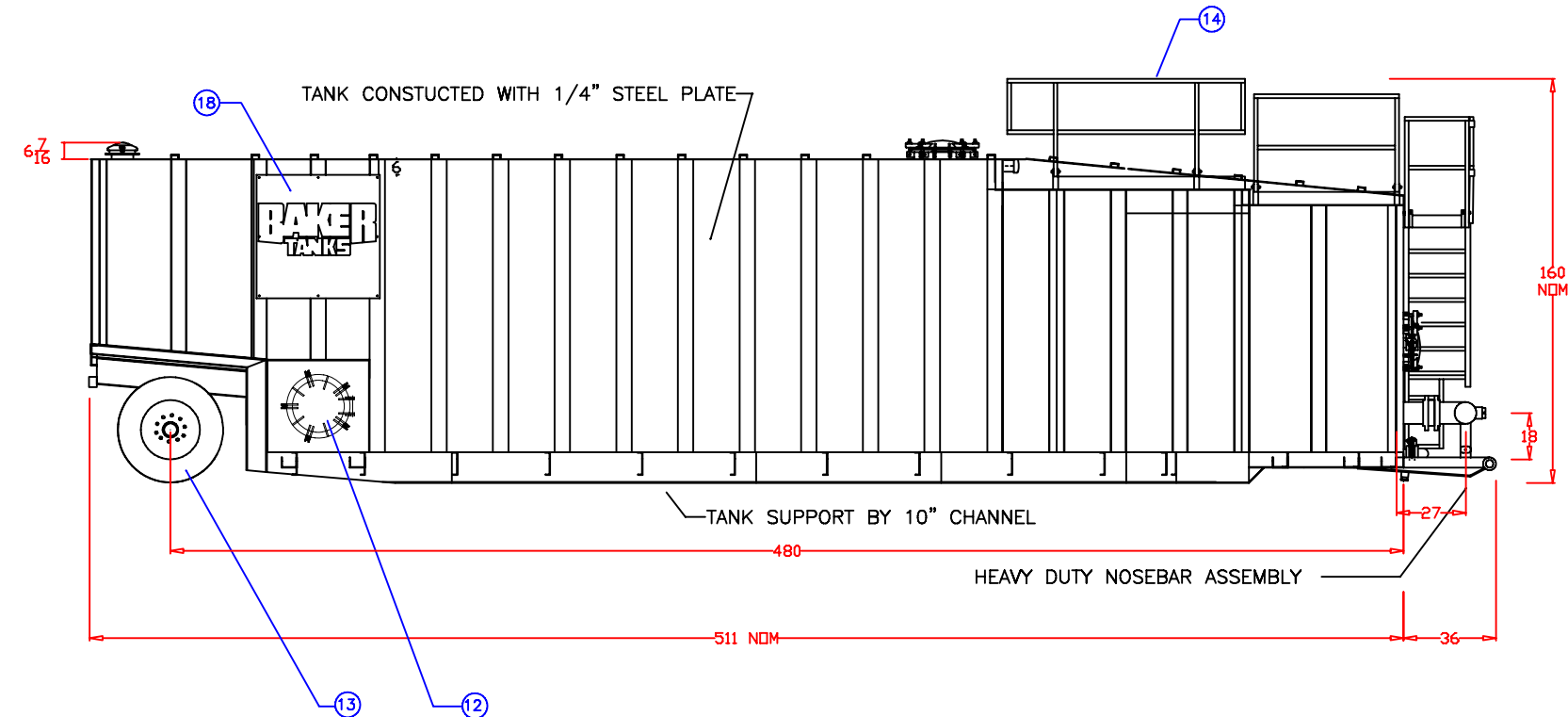


TOP VIEW

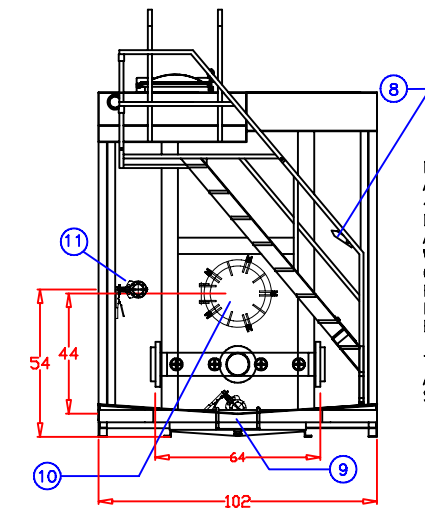
- 1) FLANGE MOUNT BLAYLOCK LL10 P/V VENT 160Z SETTING, BAKER SPEC
- 2) 4" FLANGE WITH BLIND CAP AND CHAIN
- 3) 1 1/2" COUPLING WITH PLUG
- 4) MANWAY WITH INTERNAL BARS, 21 1/2" ID, DOMED LID
- 5) 3" NIPPLE WITH CAP AND CHAIN
- 6) SAFETY WALK WAY
- 7) ACCESS STAIRS
- 8) LEVEL GAUGE W/2-8" STAINLESS STEEL BALL "Y" SUPPORT HOLDS BALLS 1/2" OFF FLOOR
- 9) FRONT DRAIN W/VALVE, BULL PLUG, CHAIN
- 10) MANWAY, 21 1/2" ID, DOMED LID
- 11) 4" FLANGE, VALVE, THREADED FLANGE, BULL PLUG, CHAIN
- 12) MANWAY, 21 1/2" ID, DOMED LID
- 13) 11.00 X 22.5 TUBLESS TIRE ON 10 HOLE STEEL WHEEL
- 14) FOLDING HAND RAILS
- 15) 4" FLANGE, VALVE, THREADED FLANGE, BULL PLUG, CHAIN REMOTE OPERATION HANDLE
- 16) 25K AXLE, AUTOMATIC SLACK ADJUSTERS, TOP MOUNTED 30 SERVICE CHAMBERS, OUTBOARD DRUMS, HUTCH 9700 SUSPENSION, 3 LEAF HIGH ARCH SPRINGS DOT TAIL LIGHTS AND LOWER MARKER LIGHTS, NO TOP LIGHTS
- 17) 48X48 BOLTED PLATE
- 18) 1" X 6" PIPE W/WELDED CAP & THREADED CAP



REAR VIEW



SIDE VIEW



FRONT VIEW

NOTE:
 ALL VALVES BRAY SERIES 30, CAST IRON BODY, 416SS STEM, BUNA-N SEAT, NYLON 11 COATED DUCTILE IRON DISC, HANDLES AS SHOWN. ALL WALL AND ROOF RIBS TO BE CONTINUOUSLY WELDED, ALL TANK SHELL SEAMS TO BE WELDED ON BOTH SIDES. RAILINGS, STAIRS & WALKWAY TO MEET OSHA STDS. INTERIOR COATED PER BAKER SPEC 8.2. EXTERIOR COATED PER BAKER SPEC 7.6. 100% CAPACITY WATER TEST. 7 PIN ROUND LIGHT PLUG. ALL SHELL 1/4" A-36 STEEL, V-BOTTOM. SOME ITEMS MAY NOT BE SHOWN IN ALL VIEWS.

NOTES:
 8" INSIDE CONNECTION WITH FLANGED 90 DEG TURN DOWN, 2" OFF FLOOR, MITERED UPPER 4" FITTED INSIDE WITH FLANGED STEEL GEL LINE GEL LINE U-BOLTED TO PIPE SUPPORTS. STAIRS FITTED WITH LOWER 1/2 WIDTH SECTION REMOVABLE TO REPLACE WITH FULL WIDTH STEP OPTION.

SPECIFICATIONS:

- 1) Tank Capacity: 21,000 gallons (500 BBL)
- 2) Tank Weight: 25,500 lbs. (empty)

NOTES:

1. This drawing is a baseline representation for this model of tank. Variations between this drawing and the actual equipment in the field can and do exist, primarily with appurtenance locations, sizes and quantities. Consult your local BakerCorp representative if specific needs exist.
2. THIS TANK IS *NOT DESIGNED FOR TRANSPORTING LIQUIDS*. It should be moved only when empty.
3. Tanks of this type have an internal lining (coating) on the wetted surfaces.
4. This tank is equipped with a pressure/vacuum relief valve set at 1.0 lbs/sq. in. pressure and 0.4 oz/sq.in. vacuum.

The information contained herein is proprietary to BakerCorp and shall not be reproduced or disclosed in whole or in part, or used for any design or manufacture except when user obtains direct written authorization from BakerCorp.				3020 OLD RANCH PARKWAY SEAL BEACH, CA 90740-2751		
G				SCALE:	SIZE	ORIGINAL DWG. DATE
F				Do Not Scale	B	10SEP02
E				DRAWN BY:	APPROVED BY:	CAT/CLASS
D				P.J.B.	-	--
C				TITLE		SHEET
B				MODERN MFG. "V" BOTTOM FIXED AXLE TANK		1 OF 1
A	Fixed lineweight and text	7/12/05	ZER	DRAWING NO.		REV.
REV.	DESCRIPTION	DATE	BY	S-2-M0007-1-		A