

PRODUCT DATA SHEET

November, 2007

FRAC TANK

GENERAL INFORMATION

This tank is sloped downward from working surface at rear of tank to the front. The rear axle is fixed to the tank (permanent).

WEIGHTS AND MEASURES

» Capacity:	500 BBL. (21,000 gal.)
» Height:	Front: 9'-0", Rear: 12'-5" Handrail up: 16'-1"
» Width :	8'-0"
» Length:	36'-4" (tank only) 42'-3" (manifolded tank overall)
» Weight:	18,000 lbs. (est.)

STRUCTURAL DESIGN

» Floor:	Carbon steel
» Sides/Ends:	Carbon steel
» Top Deck:	Carbon steel
» Internal Cross Bracing:	Round stock, 3/4" – 7/8" depending on manufacturer

FEATURES

» Manifold:	Some are equipped, some are not
» Valves:	Rear: one (1) - 4" butterfly valve Front Fill: one (1) - 4" butterfly valve Front Manifold: four (4) - butterfly valves
» Relief Valve:	<u>Standard style:</u> None <u>Safety Vapor style:</u> Buna-N seal, 16 oz. Pressure setting, 0.4 oz. Vacuum setting

FEATURES – cont.

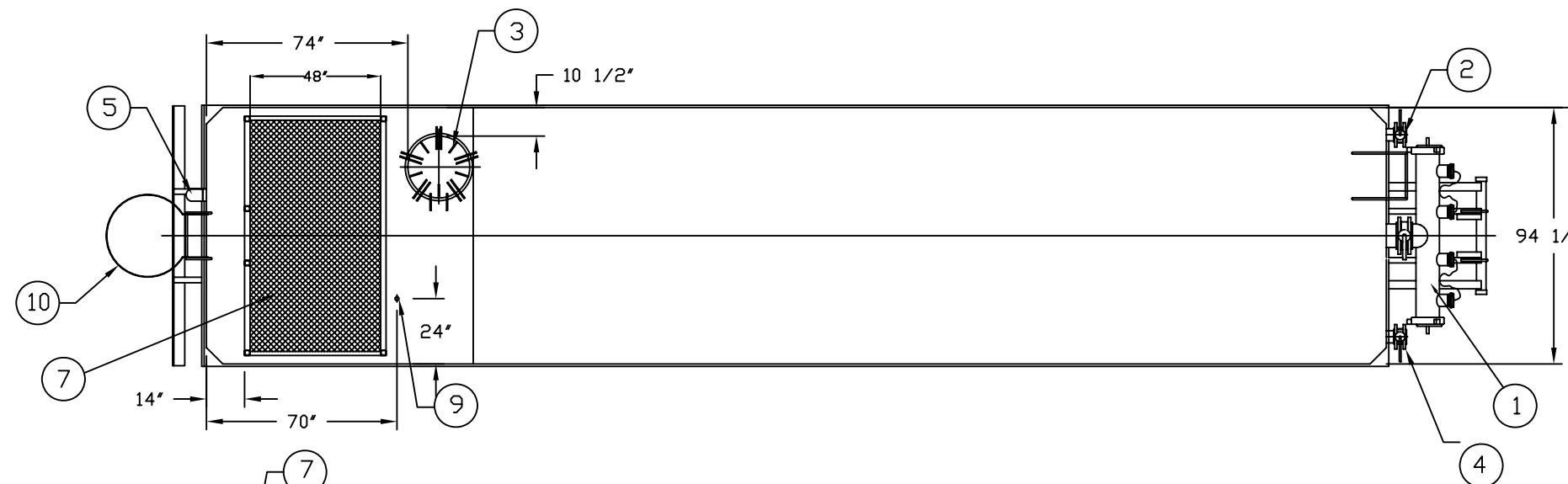
» Top Access:	One (1) access door
» Front Access:	One (1) access door
» Side Access:	One (1) access door (passenger side)
» Guardrails:	At rear platform only
» Exterior Ladder:	One (1) at rear of tank
» Internal Ladder:	One (1) located at top access door
» Front Drain:	One (1) 4" connection
» Rear Flush:	One (1) 4" capped nipple
» Level Gauge:	None
» Rear Wheels:	Fixed axle
» Overflow:	One (1) 3" overflow pipe at rear of tank
» Vent:	Original design tanks have flip open hatch

SURFACE DETAILS

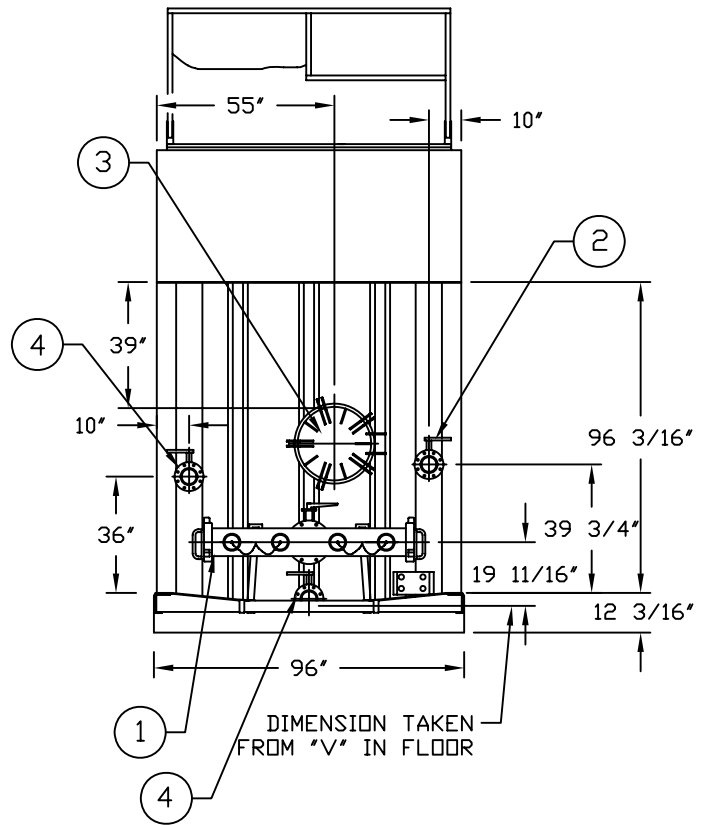
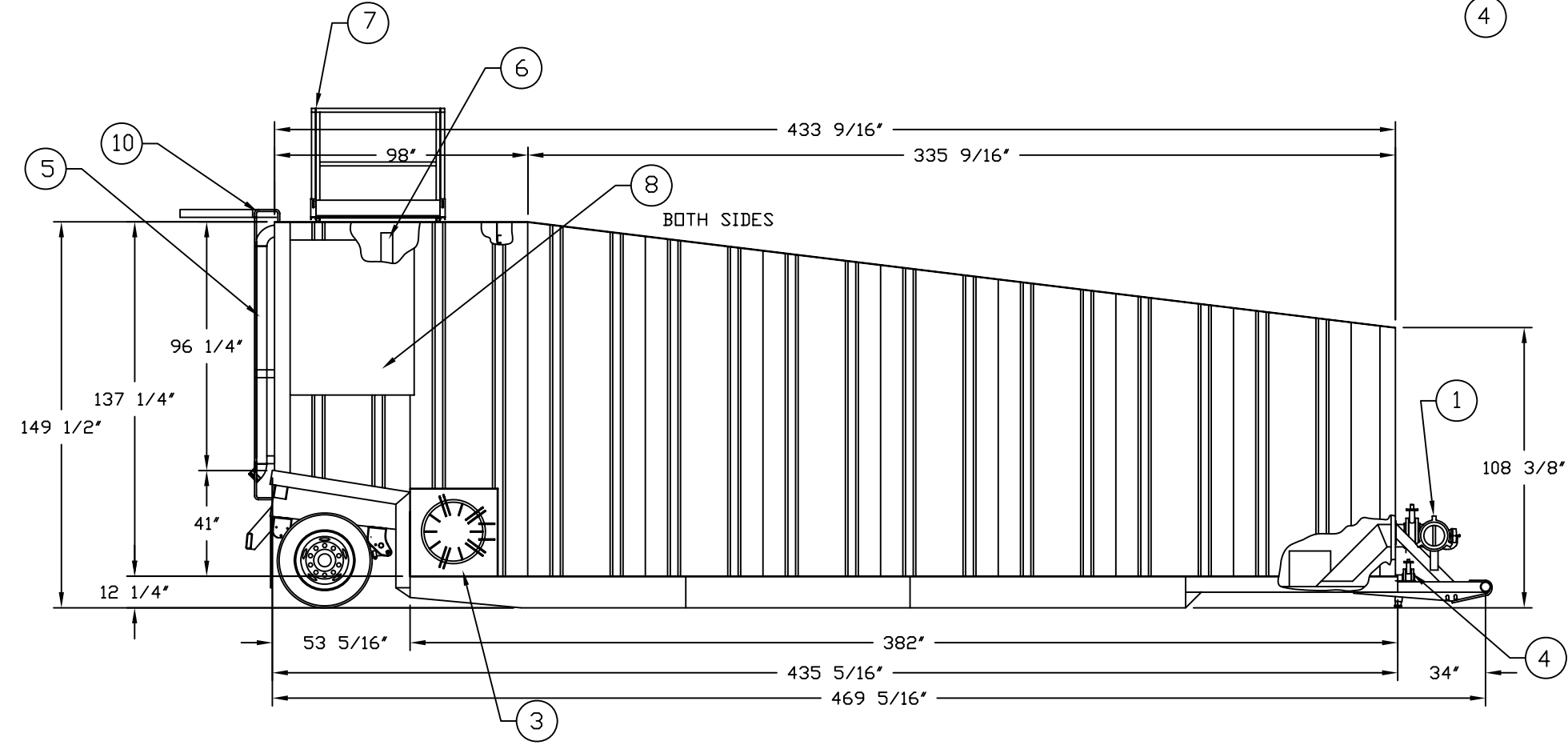
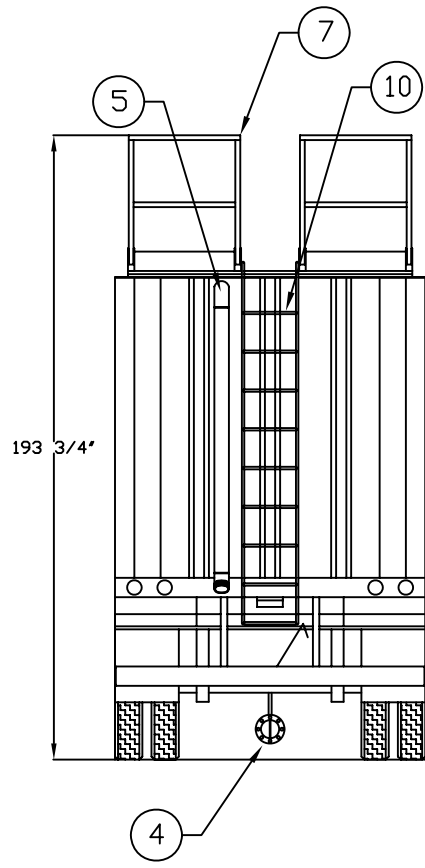
» Exterior Coating:	High gloss polyurethane
» Interior Coating:	Both lined & unlined available. Consult your local Baker representative.

TESTS/CERTIFICATIONS

» Test Performed:	Scheduled QMS inspections
-------------------	-------	---------------------------



ITEM	QTY	DESCRIPTION
1	1	8" header w/two knock-on half unions & 4-4" nipples
2	1	4" gel line
3	3	22" diameter manway
4	4	4" connection with butterfly valve
5	1	3" fill pipe
6	1	4" overflow pipe
7	1	Rear platform with ramp and handrails
8	2	60"x48" Baker Tanks sign plate
9	1	1 1/4" pipe vent
10	1	Rear ladder



SPECIFICATIONS:

- 1) Tank Capacity: 21,000 gallons (500 BBL)
- 2) Tank Weight: 18,000 lbs. (empty)

NOTES:

- 1. This drawing is a baseline representation for this model of tank. Variations between this drawing and the actual equipment in the field can and do exist, primarily with appurtenance locations, sizes and quantities. Consult your local BakerCorp representative if specific needs exist.
- 2. THIS TANK IS NOT DESIGNED FOR TRANSPORTING LIQUIDS. It should be moved only when empty.

The information contained herein is proprietary to Baker Tanks and shall not be reproduced or disclosed in whole or in part, or used for any design or manufacture except when user obtains direct written authorization from Baker Tanks.

BAKERCORP™ 3020 OLD RANCH PARKWAY
SEAL BEACH, CA 90740-2751

G				SCALE:	SIZE	ORIGINAL DWG. DATE
F				Do Not Scale	B	16JUL02
E				DRAWN BY:	APPROVED BY:	CAT/CLASS
D				P.J.B.		--
C				TITLE		SHEET
B				VE ENTERPRISES FRAC TANK		1 of 1
A				DRAWING NO.		REV.
REV.	DESCRIPTION	DATE	BY	S-2-M0004-1-	0	