

# PRODUCT DATA SHEET

January, 2007

## EZ CLEAN TANK

### GENERAL INFORMATION

Vapor tight steel tank with two sealed top access hatches and pressure/vacuum relief valve. Smooth interior walls for easy cleaning.

### WEIGHTS AND MEASURES

» Capacity:	500 BBL (21,000 gal.)
» Height:	12'-4"
» Width :	8'-0"
» Length:	37'-6" (40'-0" incl. stairway)
» Weight:	26,000 lbs.

### STRUCTURAL DESIGN

» Floor:	¼" thick ASTM A36 carbon steel, "V" shaped bottom
» Sides/Ends:	¼" thick ASTM A36 carbon steel
» Roof Deck:	¼" thick ASTM A36 carbon steel
» Wall Frame:	4"x4" steel tubing (on exterior of wall surfaces)
» Floor Frame:	4"x4" steel tubing (on exterior of floor surface)
» Roof Frame:	4"x4" steel tubing (on exterior of roof surface)
» Internal Cross Bracing:	(3) - 2" sch. 80 pipes
» Skid Rails:	4" x 4" steel tubing

### FEATURES

» Valves:	Typically 1-4" butterfly valve on front end and 1-6" butterfly valve on rear end
» Relief Valve:	16 oz./in <sup>2</sup> pressure setting, 0.4 oz./in <sup>2</sup> vacuum setting; Buna-N seal
» Roof Piping Connection:	1-4" 150# flanged (blinded) connection, driver side on rear end
» Misc. Pipe Connections:	Typically 1-4" nipple with cap on front end below poop deck and 1-2" collar with plug on top deck

### FEATURES – cont.

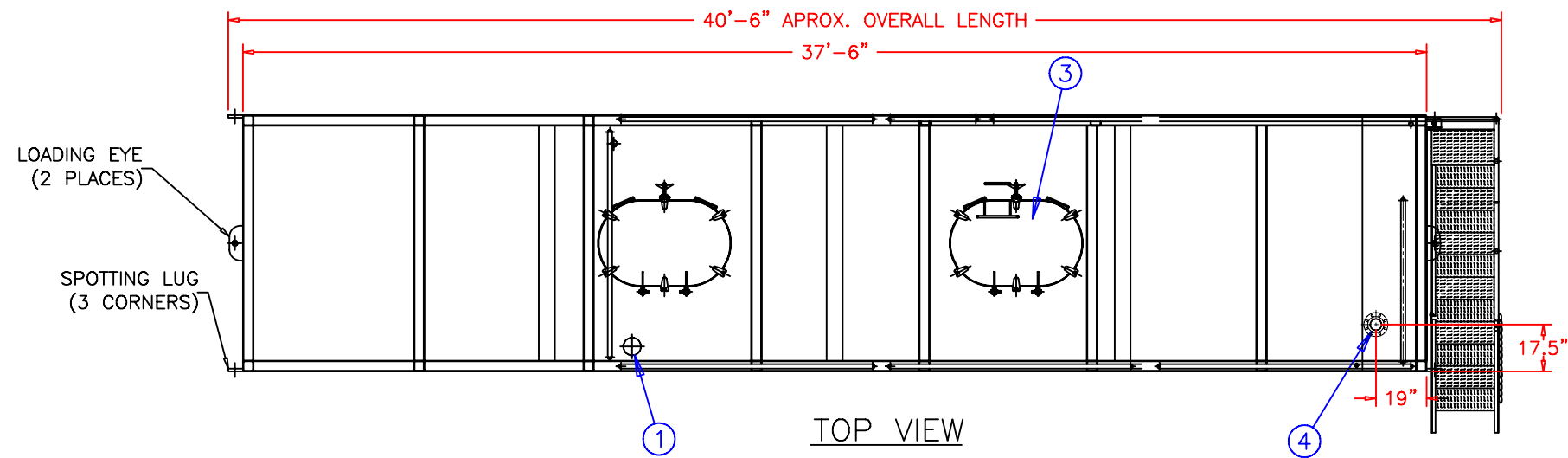
» Top Access Hatches:	2-30"x45" hinged vapor-proof hatches
» Hatch and Manway Seals:	Neoprene gasket
» End Manway:	1-20" diameter end hatch (front end)
» Exterior Stairway:	Rear end of tank – lower section folds for extension and retraction
» Guardrails:	Around top deck; fold-down
» Internal Ladder:	Nearest manhole to stairway
» Bottom Sump:	One on each end of tank, either flat bottomed, 12" diameter, 3" deep, or domed, 14" diameter, 4" deep
» Level Gauge:	Ball float style, 2-8" 304 SS floats
» Rear Wheels:	Removable dolly (not a fixed axle)

### SURFACE DETAILS

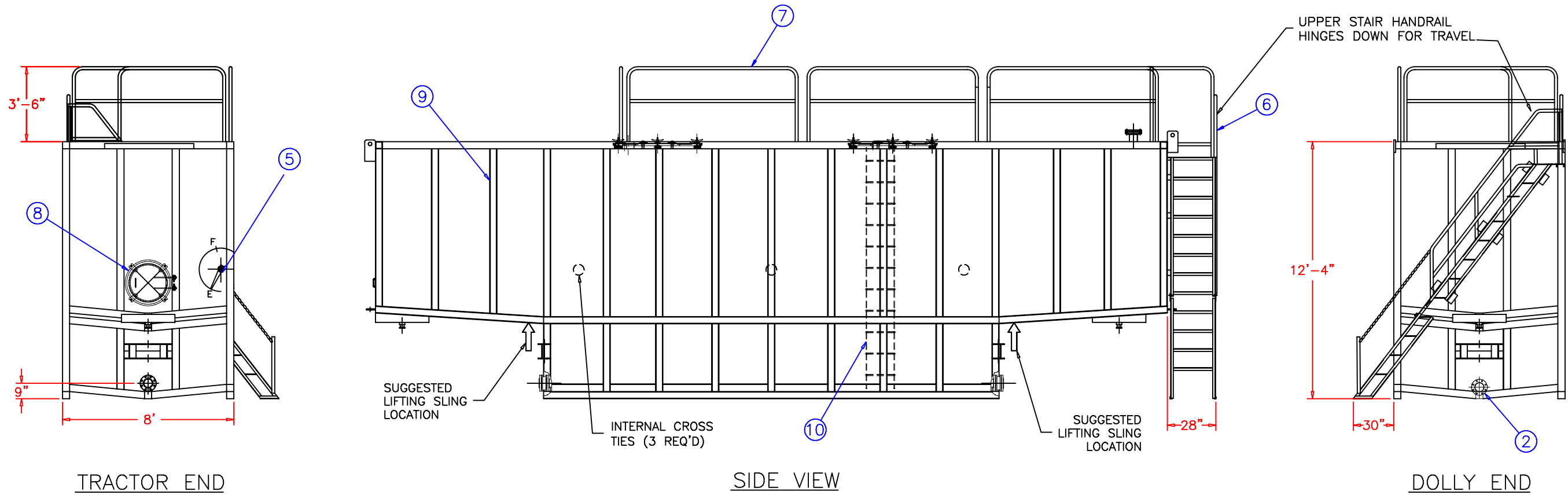
» Exterior Coating:	High Gloss Polyurethane
» Interior Coating:	Chemical resistant coating (SS float balls are not coated)
» Safety Paint:	Safety yellow on all moveable safety equipment, handrails, stairs etc.

### TESTS/CERTIFICATIONS

» Test Performed:	Major repairs – hydrotest Scheduled- Level I, II and III inspections, including NESHAP testing
-------------------	---------------------------------------------------------------------------------------------------



ITEM	QTY	DESCRIPTION
1	1	PRESSURE/VACUUM RELIEF VALVE
2	2	4" BUTTERFLY VALVE (SEE NOTE 1)
3	2	HINGED VAPOR PROOF HATCH
4	2	6" FLANGE WITH BLIND FLANGE (SEE NOTE 1)
5	1	LEVEL POINTER
6	1	OSHA COMPLIANT STAIRWAY & RAILS
7	1	OSHA COMPLIANT GUARD RAILS
8	1	20" END HATCH
9	1	4" x 4" STRUCTURAL TUBING FRAME, TYPICAL
10	1	INTERNAL LADDER



**SPECIFICATIONS:**

- 1) Tank Capacity: 21,000 gallons (500 BBL)
- 2) Tank Weight: 26,000 lbs. (empty)

**NOTES:**

- 1. This drawing is a baseline representation for this model of tank. Variations between this drawing and the actual equipment in the field can and do exist, primarily with appurtenance locations, sizes and quantities. Consult your local BakerCorp representative if specific needs exist.
- 2. THIS TANK IS *NOT DESIGNED FOR TRANSPORTING LIQUIDS*. It should be moved only when empty.
- 3. Tanks of this type have an internal lining (coating) on the wetted surfaces.
- 4. This tank is equipped with a pressure/vacuum relief valve set at 1.0 lbs/sq. in. pressure and 0.4 oz/sq.in. vacuum.

The information contained herein is proprietary to BakerCorp and shall not be reproduced or disclosed in whole or in part, or used for any design or manufacture except when user obtains direct written authorization from BakerCorp.

**BAKERCORP** 3020 OLD RANCH PARKWAY  
SEAL BEACH, CA 90740-2751

G				SCALE:	SIZE	ORIGINAL DWG. DATE
F					B	25FEB02
E				DRAWN BY:	APPROVED BY:	CAT/CLASS
D				A. R.	-	--
C				TITLE		SHEET
B				EZ CLEAN VAPOR-TIGHT		1 OF 1
A	ADDED HIDDEN LINES / LIGHTENED HANDRAILES	7/12/05	Z.E.R	DRAWING NO.		REV.
REV.	DESCRIPTION	DATE	BY		S-1-M0007-1-	A