

## PRODUCT DATA SHEET

January, 2007

## 420 BBL FIXED AXLE DOUBLE WALL TANK (WADE)

### GENERAL INFORMATION

All four walls and the rounded bottom of this tank are double-skinned. The open area between the walls (interstitial area) will contain leakage from the primary (inner) wall, should that occur, preventing liquid from leaking to the environment. There are interstitial drains to check for leaks.

### WEIGHTS AND MEASURES

» Capacity:	420 BBL @ overflow (17,640 gal.)
» Height:	9'-6" (to top of tank roof steel) 10'-3" (to handrails when folded down) 13'-0" (to handrails in upright position)
» Width:	8'-0"
» Length:	46'-4" (overall)
» Weight:	33,960 lbs.

### STRUCTURAL DESIGN

» Outer Floor:	3/16" ASTM A36 carbon steel
» Inner Floor:	1/4" ASTM A36 carbon steel
» Outer Skin: (Sides/ends)	3/16" ASTM A36 carbon steel
» Inner Skin: (sides/ends)	1/4" ASTM A36 carbon steel
» Roof Deck:	1/4" ASTM A36 carbon steel
» Interstitial Framing:	1/4" x 5" x 3" carbon steel channel iron

### FEATURES

» Valves:	(2)Front & (1)Rear: 4"- wafer butterfly valve. Cast iron body, Buna-N seat & seals, 316 SS stem, Nylon 11 coated ductile iron disk, with plug and chain.
» Relief Valve:	16 oz./in <sup>2</sup> pressure setting, 0.4 oz./in <sup>2</sup> vacuum setting; Buna-N seal
» Front Drain:	4" flange w/butterfly valve along centerline bottom of floor
» Rear Drain:	4" flange w/butterfly valve along centerline bottom of floor

### FEATURES – cont.

» Front Fill Connection:	4" flange w/butterfly valve on passenger side
» Interstitial Drains:	Two (2) – 1" @ bottom center, front and rear of tank with ball valve
» Fill Line:	3" stub at rear driver side on roof top
» Overflow:	3" collar at front driver side
» Manways:	Three (3) – 22" round manways on rear, center and front of roof, made of flat 1/2" flat plate with 5/8" bolts and nuts; 1/2" x 1/2" square Buna-N spliced ring gaskets
» Stairway:	At rear of tank with OSHA handrail
» Guardrails:	Self locking, 1" square tubing on top of tank
» Internal Ladder:	One (1) located below rear hatch, constructed of 3/4" round bar
» Level Gauge:	Ball float style, 2-8" 304 SS floats
» Misc. Piping Connections:	One (1) – 4" top vent (blinded) Two (2) – 1" nipples & plugs at top rear into interstitial area
» Tires:	11R x 22.5
» Axles:	22,500 Spicer – Dana D-22

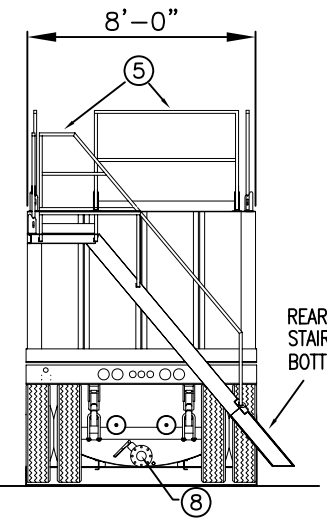
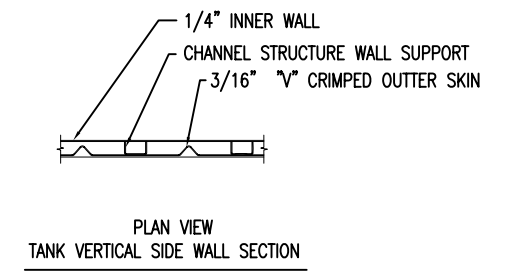
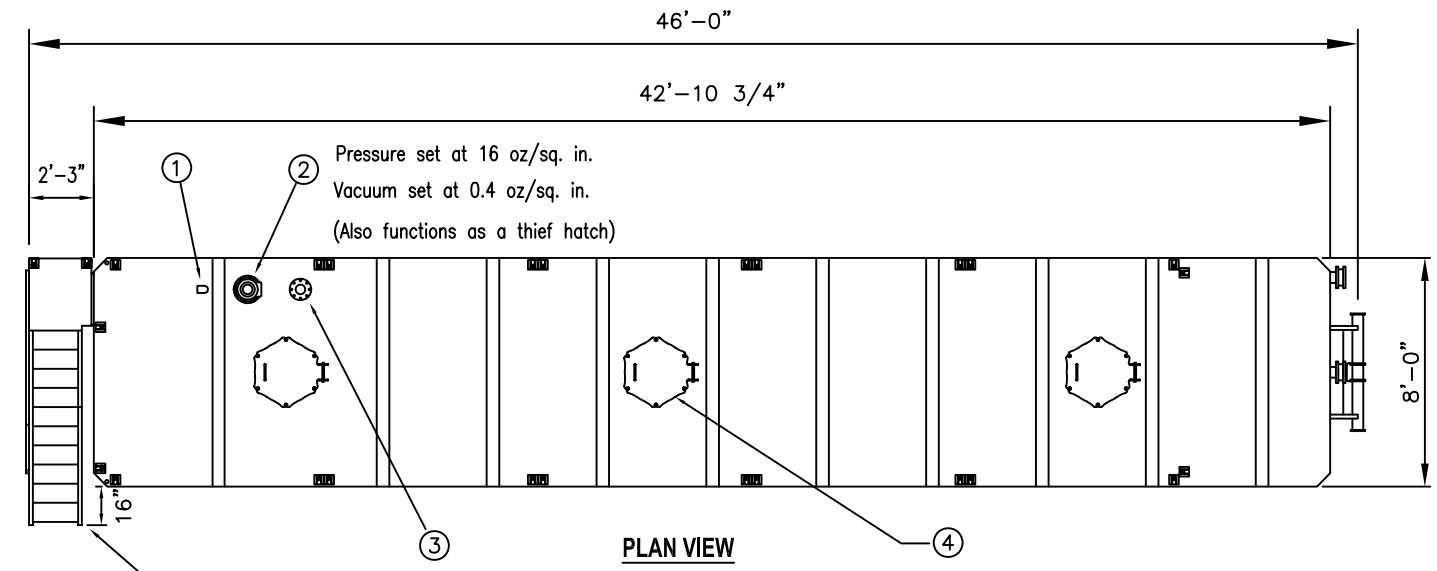
### SURFACE DETAILS

» Exterior Coating:	High gloss polyurethane
» Interior Coating:	Chemical resistant lining
» Safety Paint:	Safety yellow – handrails, hatch covers and trip hazard surfaces

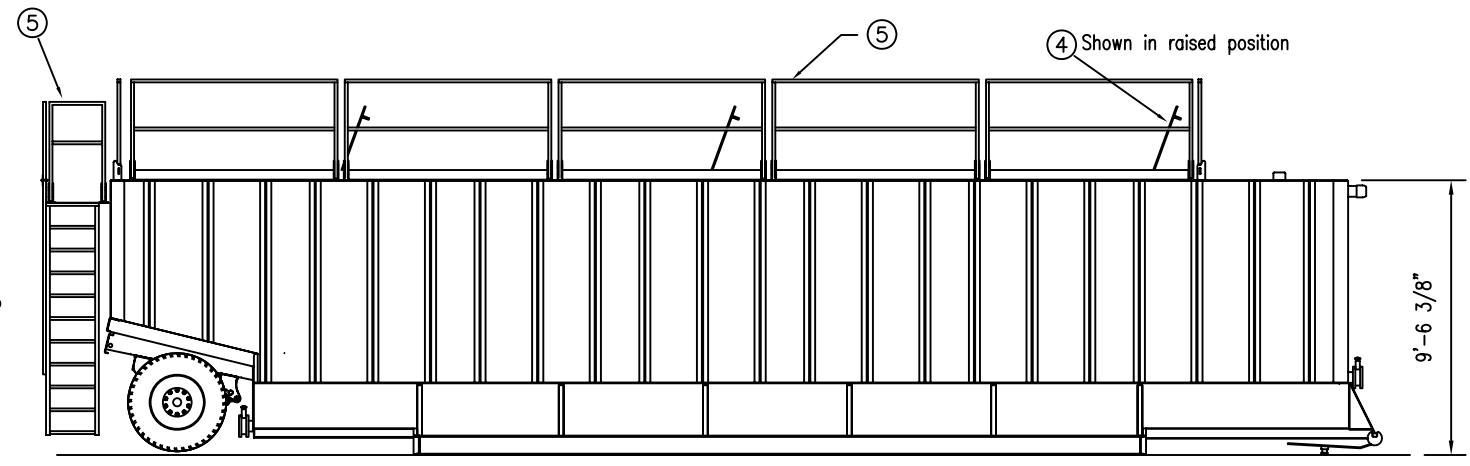
### TESTS/CERTIFICATIONS

» Test Performed:	3 psi air test; scheduled Level 1, 2 & 3 QMS inspections
-------------------	--

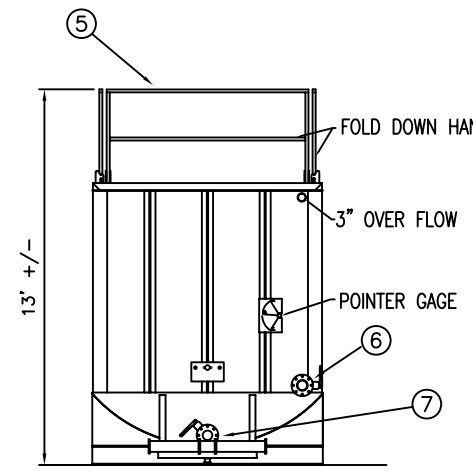
ITEM	QTY	DESCRIPTION
1	1	3" ROOF FILL
2	1	8" PRESSURE/VACUUM VALVE
3	1	4" FLANGE (VAPOR RECOVERY CONN.)
4	3	22" MANWAY HATCH
5	14	FOLD-DOWN HANDRAIL (various shapes/sizes)
6	1	4" FRONT FILL WITH BUTTERFLY VALVE
7	1	4" FRONT DRAIN WITH BUTTERFLY VALVE
8	1	4" REAR DRAIN WITH BUTTERFLY VALVE



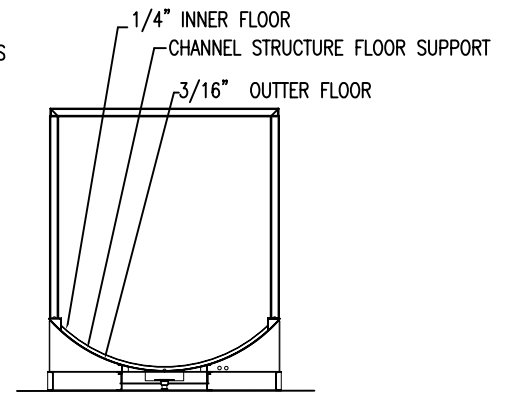
REAR ELEVATION



PASSENGER SIDE ELEVATION



FRONT ELEVATION



INTERNAL VIEW

**SPECIFICATIONS:**

- 1) Tank Capacity: 17,640 gallons (420 BBL.)
- 2) Tank Weight: 33,960 lbs. (empty)

**NOTES:**

- 1. This drawing is a baseline representation for this model of tank. Variations between this drawing and the actual equipment in the field can and do exist, primarily with appurtenance locations, sizes and quantities. Consult your local BakerCorp representative if specific needs exist.
- 2. THIS TANK IS **NOT DESIGNED FOR TRANSPORTING LIQUIDS**. It should be moved only when empty.
- 3. Tanks of this type have an internal lining (coating) on the wetted surfaces.
- 4. This tank is equipped with a pressure/vacuum relief valve set at 1.0 lbs/sq. in. pressure and 0.4 oz/sq.in. vacuum.

The information contained herein is proprietary to BakerCorp and shall not be reproduced or disclosed in whole or in part, or used for any design or manufacture except when user obtains direct written authorization from BakerCorp.			
G			
F			
E			
D			
C			
B			
A	MADE TEXT READABLE	7/12/05	Z.E.R
REV.	DESCRIPTION	DATE	BY

**BAKERCORP** 3020 OLD RANCH PARKWAY  
SEAL BEACH, CA 90740-2751

SCALE: Do Not Scale	SIZE B	ORIGINAL DWG. DATE 11SEP02
DRAWN BY: P.J.B.	APPROVED BY: -	CAT/CLASS --
TITLE WADE FIXED AXLE DOUBLE WALL TANK		SHEET 1 OF 1
DRAWING NO. S-2-M0009-1-		REV. A