

PRODUCT DATA SHEET

January, 2007

WALKER TANK TRAILER (Stainless Steel)

GENERAL INFORMATION

This insulated trailer is built in full accordance with Department of Transportation regulations (DOT-407).

WEIGHTS AND MEASURES

» Capacity:	7000 gallons
» Height:	11'-2" overall
» Width:	7'-10"
» Length:	42'-1" (overall trailer length – rear bumper to tank front) 41'-5½" (insulated end to insulated end of barrel)
» Weight:	12,870 lbs. (empty, tank & trailer)
» Ratings:	G.V.W.R.: 65,000 lbs. G.A.W.R.: 1 st – 20,000 lbs., 2 nd – 20,000 lbs. Payload – approx. 50,000 lbs.

OPERATING SPECIFICATIONS

» Liquid Density:	13 lbs. / gallon
» MAWP:	25 psig
» Temperature:	300°F (some are rated for only 250°F)

BARREL

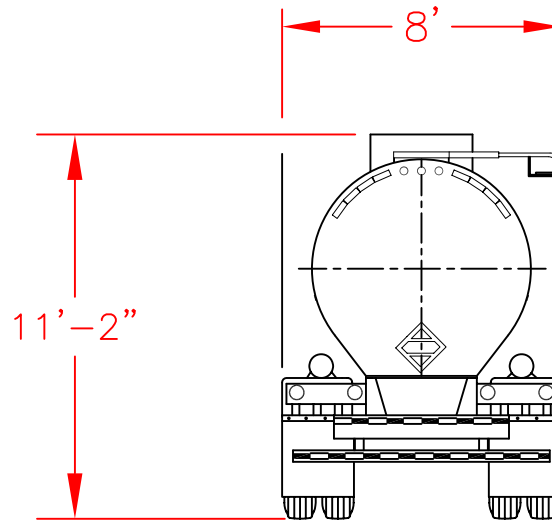
» Tank Shell:	10-gauge 316L stainless steel
» Shell Head:	10-gauge 316L stainless steel
» Baffles:	None
» Exterior Rings:	304 S.S. "U" section welded to barrel

FEATURES

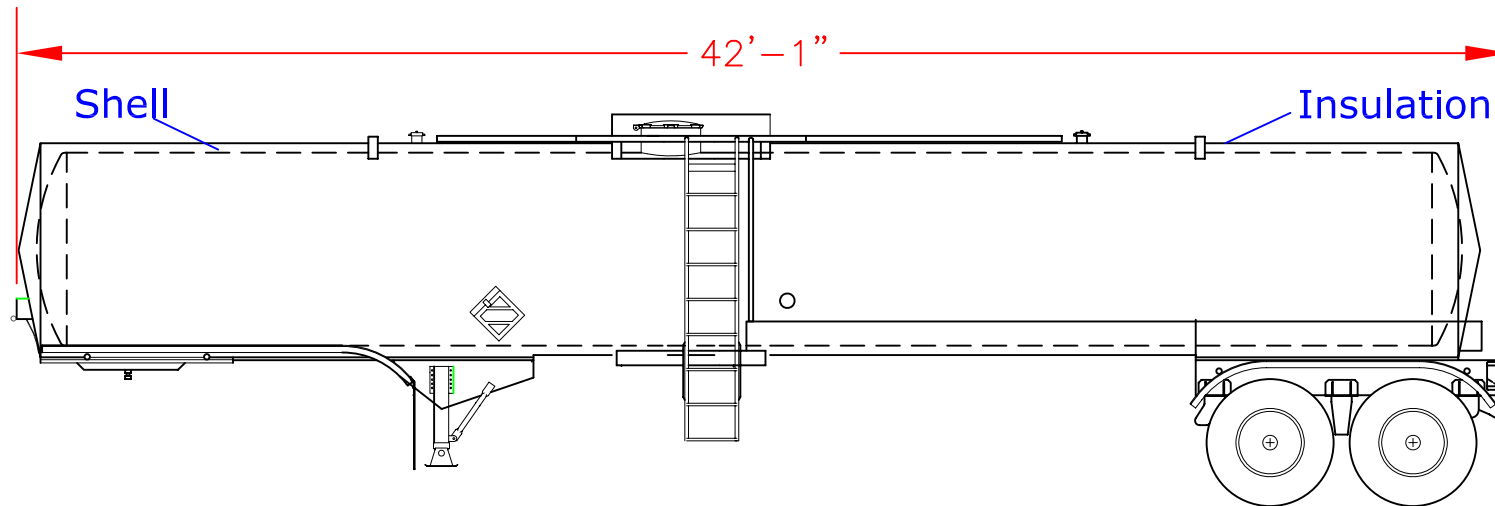
» Manhole:	20" full opening Betts #8355LCW, 316L S.S., white hypalon gasket
» Heat:	Full length 304 S.S. fluted channels, steam inlet at front, drain with trap at rear, equipped for in-transit heat with ball valves. In-transit inlet and return connections at front.
» Insulation:	Fiberglass, 6" compressed to 5"
» Jacketing:	304 S.S. Barrel: 22-ga. bright annealed.; Outer Heads: 18-ga. bright annealed. Aluminum underlayment from cleanouts to ends of tank.
» Spilldam:	304 S.S. with sloped floor for drainage. (Some have (2) external plastic drains.)
» Overturns:	D.O.T. overturn protection at ends of spilldam and past each cleanout
» Ladder:	(1)- 16" wide 304 S.S. with one platform top step, dimpled channel rungs and side hand rails, grab rails on curbside of walkway.
» Walkway:	12" wide aluminum safety grating curbside of spilldam connected to 19" wide aluminum safety grating to cleanouts
» Kingpin Plate:	Heavy-duty bolted. 3" increments, 1½" adjustments.
» Landing Gear:	JOST 2-speed, A400-T10-17, with 12"x14" pad, curbside crank
» Suspension:	Hutch CH9700 with tanker option, flange mount hangers and three leaf springs
» Shell Subframe:	304 S.S. crossmembers, outriggers and gussets

FEATURES – cont.

» Axles:	(2) Meritor (Rockwell) TN4671Q, 5" round, 71.5" track with TN type spindle, 22,500-lb. beam and bearing rating. MGM TP30/30 long stroke spring brake chambers and 5.5" automatic slack adjusters and ABS brackets.
» Brake System:	ABS – WABCO 4S-2M wired to blue wire. Emergency valve – spring brake priority Bendix. Brake lining - 16½"x7", Carlisle MB-21, non-asbestos. Brake shoes – quick change
» Hubs:	(4)- aluminum 10-stud, TN type spindle, bolt on hubcap, Mobil SHC-220 synthetic pre-greased, pre-set, for aluminum wheels, hub piloted, ABS toner ring. For use with 16½"x7" brakes. Hubodometer on streetside front axle. (4) 16½"x7" centrifuge drums.
» Rims/Wheels:	8.25x24.5 steel disc, for 10 hole hubs, hub piloted.
» Tires:	285/75R24.5 (G) Goodyear G-114 radials w/14-ply rating
» Lights:	Truck-lite lights/harness system. Side center marker lights wired to flash with turn signals. Blue wire - ABS
» Nose Box:	Berg nose box with circuit breakers, front streetside
» Hose Carrier:	(1)- 10" dia. x 21' Al. hose tube on curbside, or (2) 8" dia. x 21' Al. hose tubes, one on each side
» Emergency Valve:	4"x3"x90" Betts #CH46312SSTS 316 S.S. quick clean chemical hydraulic valve
» Operator System:	Hydraulic pump on rear tandem frame. Remote fusible & frangible plug front roadside, & fusible plug at valve
» Piping:	3" 316L stainless steel
» Outlet Valve:	3" Betts #OR713SST 316 S.S. Hydrolet valve, thr'd outlet
» Gaskets:	Teflon envelope milled gaskets on all flanged conn.
» Pump:	None
» Vents:	(1)- 3" Girard # DOT3X407T pressure relief vent, 25 psig MAWP, rated test pressure of 45 psig, teflon encapsulated o-ring, on nipple in spillbox, offset to roadside, with sealing provisions. (1)- 3" Girard #407MVB-TT magnetic vacuum breaker, teflon seat, on nipple in spillbox, offset to curbside, with sealing provisions. Air inlet assembly with 2" 0-60 psig pressure gauge, S.S. ball valve and two-lug connector on vacuum breaker.
» Vapor Recovery:	3" hydraulically operated valve in spilldam behind manhole with 2" S.S. tee. Streetside of tee terminates in spilldam area with S.S. ball valve, S.S. male adapter and S.S. cap. Curbside of tee 2" S.S. line running down side of tank to rear with 2" S.S. ball valve, S.S. male adapter and S.S. cap. (Note: Vapor recovery not available on some tanks)
» Cleanouts:	(3)- 3" 316L S.S. NPT nipples with solid S.S. caps, retaining cables and sealing provisions. (2) located max. 10' from tank heads, (1) located in domelid.
» Thermometer:	(1) bulb type 0'-300', 6'above grade, curbside center
» Level Indicator:	None
» Cert Holder:	(1) Betts PS-1 on streetside, landing gear area
TESTS/CERTIFICATIONS	
» Test Performed:	OEM hydrotest @ 40 psig, and scheduled D.O.T. V, I, P and K inspections



REAR VIEW



DRIVER'S SIDE VIEW

Specifications:

- Capacity: 7,000 gallons
- Weight: 12,870 lbs (empty, tank + trailer)
- Payload: 50,000 lbs. (approx.)
- MAWP: 25 psig
- Shell Mat'l: 316L Stainless Steel

Notes:

1. This is a general layout drawing only.

The information contained herein is proprietary to BakerCorp and shall not be reproduced or disclosed in whole or in part, or used for any design or manufacture except when user obtains direct written authorization from BakerCorp.			BAKERCORP 3020 OLD RANCH PARKWAY SEAL BEACH, CA 90740-2751		
			SCALE: N.T.S.	SIZE: A	ORIGINAL DWG. DATE: 23JAN06
			DRAWN BY: P.J.B.	APPROVED BY: -	CAT/CLASS: --
			TITLE: WALKER DOT 407 TANKER TRAILER		SHEET: 1 OF 1
			DRAWING NO. S-4-M0003-1-		REV. 0
DESCRIPTION	DATE	BY			