

## PRODUCT DATA SHEET

January, 2007

## POLAR TANK TRAILER (Stainless Steel)

### GENERAL INFORMATION

This insulated trailer is built in full accordance with Department of Transportation regulations (DOT-407).

### WEIGHTS AND MEASURES

» Capacity:	.....	7000 gallons
» Height:	.....	11'-7" overall
» Width:	.....	7'-10" (approx.)
» Length:	.....	42'-6" (overall trailer length – rear bumper to tank front) 39'-0" (shell cylinder length – not including heads)
» Weight:	.....	13,000 lbs. (empty, tank + trailer)
» Ratings:	.....	G.C.W.: 80,000lbs. Trailer: 13,000lbs.; Tractor: 18,000 lbs. Payload – 49,000lbs.

### OPERATING SPECIFICATIONS

» Liquid Density:	.....	8.29 lbs./gal
» MAWP:	.....	25 psig
» Temperature:	.....	300°F maximum

### BARREL

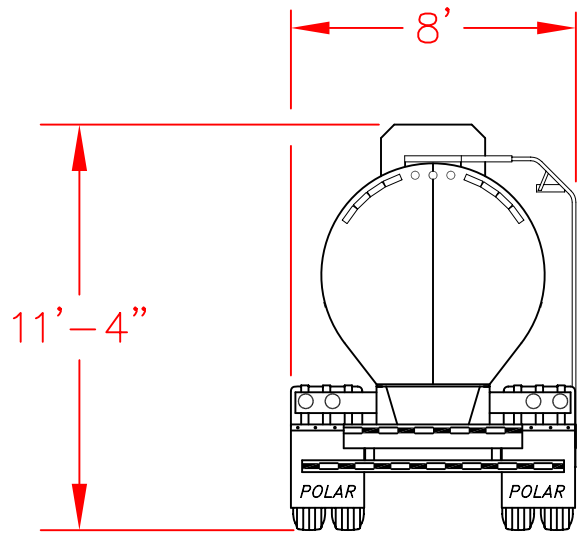
» Tank Shell:	.....	10-gauge 316 stainless steel, two piece with one circumferential weld
» Shell Head:	.....	10-gauge 316 stainless steel, butt-welded, seamless
» Baffles:	.....	None
» Exterior Rings:	.....	Stainless steel channel sections welded to barrel
» Frame:	.....	Stainless steel outriggers & crossmembers welded to stainless steel frame. Expansion joint between landing gear and upper fifth wheel.

### FEATURES

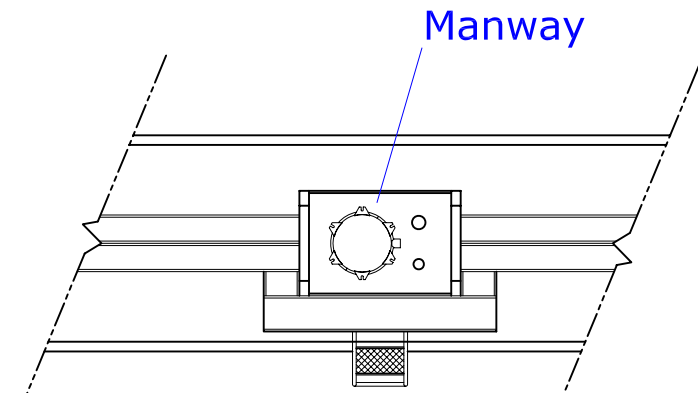
» Manhole:	.....	Stainless steel 20" full opening, hinged to front, manhole stop, 6-holdowns, teflon gasket in cover
» Heat:	.....	Heat panel, 150 psi working pressure welded to bottom of vessel with standard traps and pressure relief, with ¾" NPT inlet and outlet, 18" wide panel
» Insulation:	.....	Fiberglass, 6" compressed to 5"
» Jacketing:	.....	Belly-wrapped 22-gauge bright finish jacket, lapped seams, 18-gauge heads, lock seamed to jacket
» Spilldam:	.....	Stainless steel, near center of trailer with polyethylene drain hoses on each side
» Overturns:	.....	Stainless steel box type, per D.O.T. spec., at spilldam and outboard of each cleanout.
» Ladder:	.....	Stainless steel tubular with grip steps, attached to walkway, curbside, with large platform step. Bolt-on top and bottom.
» Walkway:	.....	19" wide aluminum grip strut down center to cleanouts. 12" wide aluminum grip strut curbside of dam and connected to center walkway.

### FEATURES – con't

» Fifth Wheel:	.....	5/16" heavy-duty upper fifth wheel plate with Holland A.A.R. style double hubbed kingpin, adjustable in 2" increments.
» Landing Gear:	.....	Austin "Lift-pak" round leg 2-speed, steel, sand shoes, 50,000 lb. lift capacity, curbside crank handle
» Suspension:	.....	TRANSPRO, Model 88 tandem, 3-leaf (11,000 lb. cap.) fabricated steel (u-bolt nuts down, 3-point mount
» Axles:	.....	Rockwell, Model TN4670-Q, 5" round x ½" thick wall, 71½" track
» Brake System:	.....	Rockwell "O" series, s-cam 16½"x7". Provisions for anti-lock includes tone rings on one axle. Brake chambers are TSE 3030. WEBB 16½"x7" heavy duty, cast, outboard mount brake drums. Ferrous hub with double cap nut mounting. ABBEX – ABB-3030-197 brake lining. Rockwell automatic slack adjuster. Midland valves. TRAMEC gladhands.
» Wheels:	.....	24.5x8.25 steel disc, 10-hole, 1 1/4" bolt circle.
» Tires:	.....	285/75R – 24.5 Bridgestone R-194 radials
» Lights:	.....	12-volt, Truck-lite, vapor proof D.O.T. lights and reflectors. Combination center marker/turn signals.
» Hose Carrier:	.....	One 10" x 21' aluminum hose tube, doors both ends, mounted on roadside
» Emergency Valve:	.....	Betts CH45613-SST 4"x3" S.S. external hydraulic valve, attached to a 4" S.S. mounting pad, attached to fluted drain with pump and hydraulic line. Pump is mounted off rear subframe with copper line to front roadside frangible mounted off jacketing.
» Piping:	.....	3" S.S. spool piece between emergency valve & outlet valve
» Outlet Valve:	.....	Betts QR713-SST 3" ORB Hydrolet valve attached to spool piece, ending in 3" NPT threads
» Pump:	.....	None
» Vents:	.....	D.O.T. 407 25-psi Girard pressure vent, with Tef-sil seat, on a 4" threaded nipple in dam area ahead of manhole on roadside. One 3" Girard magnetic vacuum breaker with viton seat and pressurizing package consisting of a pressure gauge, ball valve, and a Chicago Coupler on a 3" threaded nipple in a dam area, ahead of manhole on curbside.
» Vapor Recovery:	.....	None
» Cleanouts:	.....	(2)- 3" threaded nozzles with solid caps located 10' from each head. No sealing provisions.
» Thermometer:	.....	0-300°F, remote sensing, bulb type, curbside at ladder
» Level Indicator:	.....	None
» Placards:	.....	(4)- aluminum holders, front, rear and both sides
» Cert Holder:	.....	Betts PS-1 on landing gear frame
<b>TESTS/CERTIFICATIONS</b>		
» Tests Performed:	.....	Scheduled D.O.T. V, I, P and K inspections

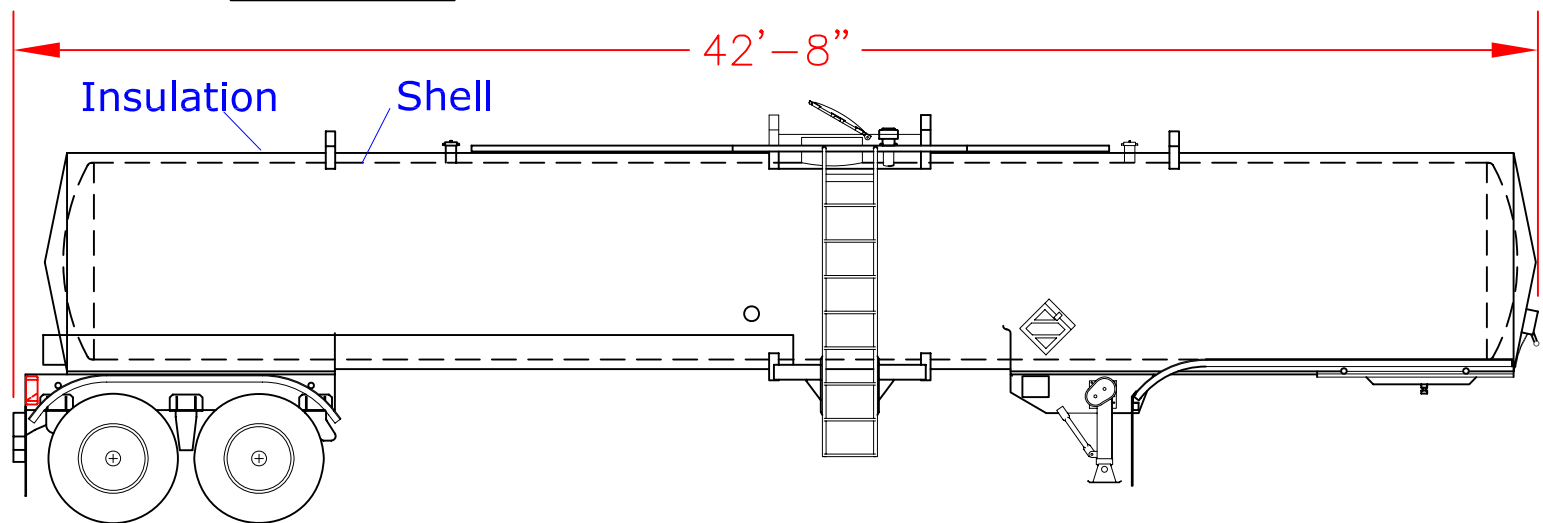


**REAR VIEW**



Manway

**TOP VIEW**



**CURBSIDE VIEW**

**Specifications:**

- Capacity: 7,000 gallons
- Weight: 13,000 lbs (empty, tank + trailer)
- Payload: 49,000 lbs. (approx.)
- MAWP: 25 psig
- Shell Mat'l: 316L Stainless Steel

**Notes:**

1. This is a general layout drawing only.

The information contained herein is proprietary to BakerCorp and shall not be reproduced or disclosed in whole or in part, or used for any design or manufacture except when user obtains direct written authorization from BakerCorp.

**BAKERCORP** 3020 OLD RANCH PARKWAY  
SEAL BEACH, CA 90740-2751

G			
F			
E			
D			
C			
B			
A			
REV.	DESCRIPTION	DATE	BY

SCALE: N.T.S.	SIZE: A	ORIGINAL DWG. DATE: 23JAN06
DRAWN BY: P.J.B.	APPROVED BY: -	CAT/CLASS: NA
TITLE: POLAR DOT 407 TANKER TRAILER		SHEET: 1 OF 1
DRAWING NO. S-4-M0004-1-		REV. 0