

PRODUCT DATA SHEET

January, 2007

BRENNER TANK TRAILER (Stainless Steel)

GENERAL INFORMATION

This insulated trailer is built in full accordance with Department of Transportation regulations (MC-307/DOT-407).

WEIGHTS AND MEASURES

» Capacity:	7000 gallons
» Height:	11'-7" (approx.) from grade to top of spilldam
» Width:	8'-2" (approx.)
» Length:	43'-1" overall (from nose box to end of trailer in rear) 40'-6" barrel only (bare steel) 40'-7½" insulated end to end
» Weight:	12,900 lbs. (empty, tank & trailer)
» Payload:	49,975 lbs. (est.) based on empty weight of trailer (without hoses) and estimated tractor weight of 17,125 lbs. (including driver and fuel). [Total combined weight is 80,000 lbs.]

OPERATING SPECIFICATIONS

» Liquid Density:	13 lbs. / gallon maximum
» M.A.W.P.:	25 psig
» Temperature:	300° F maximum

BARREL

» Tank Shell:	0.130" thick 316L stainless steel
» Shell Head:	0.140" thick 316L stainless steel, butt welded, ASME dished
» Baffles:	None
» Exterior Rings:	12-gauge SS 2¾" hi hat channel

FEATURES

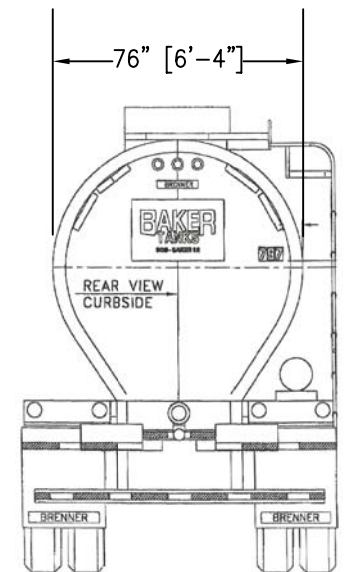
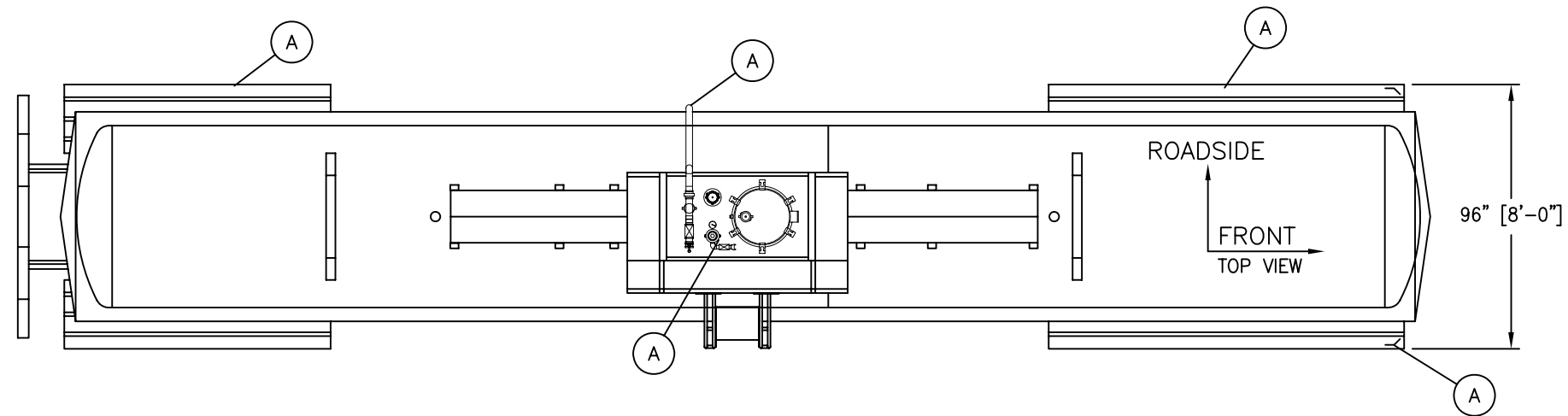
» Manhole:	(1) 20" full opening Betts 8310-LC-W, 6-lug with white hypalon gasket in cover, near center of tank
» Heat:	Full-length 304 stainless steel channels, 150-psig design working pressure, designed for steam and in-transit heat with inlet and outlet at front of tank with ball valves.
» Insulation:	6" fiberglass compressed to 5". Underlayment is 24" wide, 0.080" thick aluminum.
» Jacketing:	Jacket – 22-gauge BA/SS lapped seams Jacket heads – 18-gauge 304SS #4 finish lock seam
» Spilldam:	304 SS around manhole with sloped floor & 1-1½" black pvc drain hose on curbside.
» Overturns:	At ends of spilldam and beyond each cleanout.
» Ladder:	(1) SS 18" wide with dimpled channel rungs, side hand rails and platform type top step, curbside at spilldam, grabhandles at top each side
» Walkway:	19" wide aluminum diamond type on top centerline from spilldam to cleanouts. 12" wide on three sides of spilldam
» Kingpin Plate:	Heavy-duty bolt-on 4" increments, 2" adjustments
» Landing Gear:	JOST A400 2-speed with 12"x14" sand shoes, curbside crank, 304SS frame.
» Suspension:	Hutch CH9700 with tanker option, 3-leaf springs and cast flangemount hangers, 304SS frame.

FEATURES – cont.

» Axles:	Meritor TN4671Q 5" round (22,500# rating), 71-½" track with HM bearings and sensor blocks for ABS
» Brake System:	O series, 16½x7 S-cam with Meritor automatic slack adjusters, (20,000# rating). Bendix brake valves, MGM long stroke spring brake chambers, and steel air tank system meeting FMVSS 121 requirements. Carlisle MB-21 brake shoes. Meritor WABCO anti-lock brake system 4S/2M. Remote diagnostic plug at front of suspension frame.
» Hubs:	Conmet preset, pregreased aluminum 10 stud, hub piloted outboard mounted centrifuse drums w/ ABS exciter rings. Engler hubodometer-curbside rear.
» Rims/Wheels:	8.25x24.5 steel disc, 10-hole hub piloted
» Tires:	285/75R-24.5 (G) Goodyear G314LP 14 ply low profile radials, or equal
» Wiring:	Truck-lite harness exposed with one junction box ahead of suspension
» Lights:	12-volt truck-lite in SS boxes with side markers tied into turn signals
» Nose Box:	7-way A.T.A. connector, lower roadside on front end
» Hose Carrier:	(2) 10"x21" aluminum hose tubes with doors on each end. One on each side.
» Emergency Valve:	(1) 4"x3"x90" SS BETTS quick clean chemical hydraulic valve (#CH46312-SSTS)
» Operator System:	Enerpac hydraulic pump. Remote fusible and frangible plug @ front roadside of trailer.
» Piping:	(1) 3" SS spool piece between emergency valve and outlet valve
» Outlet Valve:	(1) 3" SS ORB Hydrolet with 90° threaded outlet (Betts OR 713 SS-T), pointed to rear
» Gaskets:	Teflon gaskets on all flanged connections
» Seal Tabs:	Provisions for government seals on all openings
» Vents:	(1) 3" Girard threaded (DOT407) pressure relief vent, with teflon encapsulated o-ring, on a 3" threaded nozzle to rear of manhole offset to roadside in spilldam. (1) Girard threaded (3X-407MVB-TT) magnetic vacuum breaker with teflon seat, and air inlet and gauge assembly, on a 3" threaded nozzle to rear of manhole offset to curbside in spilldam.
» Vapor Recovery:	(1) 3"x2" tee style hydraulic vapor recovery valve mounted on 3" nozzle inside spilldam, to be opened with hydraulic system of the emergency valve using same hydraulic hand pump. Pressure gauge on curbside leg. Roadside leg has 2" SS piping down side of tank to rear of trailer ending with pressure gauge, 2"SS ball valve, 2" SS adapter and dust cap.
» Cleanouts:	(3) 3" threaded nozzles with solid caps, (2) located in tank shell on top centerline max. 10' from head seams, and (1) located in manhole cover
» Thermometer:	(1) 0-300°F clip-on type, curbside eye level, tank center
» Level Indicator:	None
» Sign Holders:	(4) aluminum DOT slide-in style, front and rear heads
» Cert Holder:	(1) Betts PS-1, roadside landing gear frame

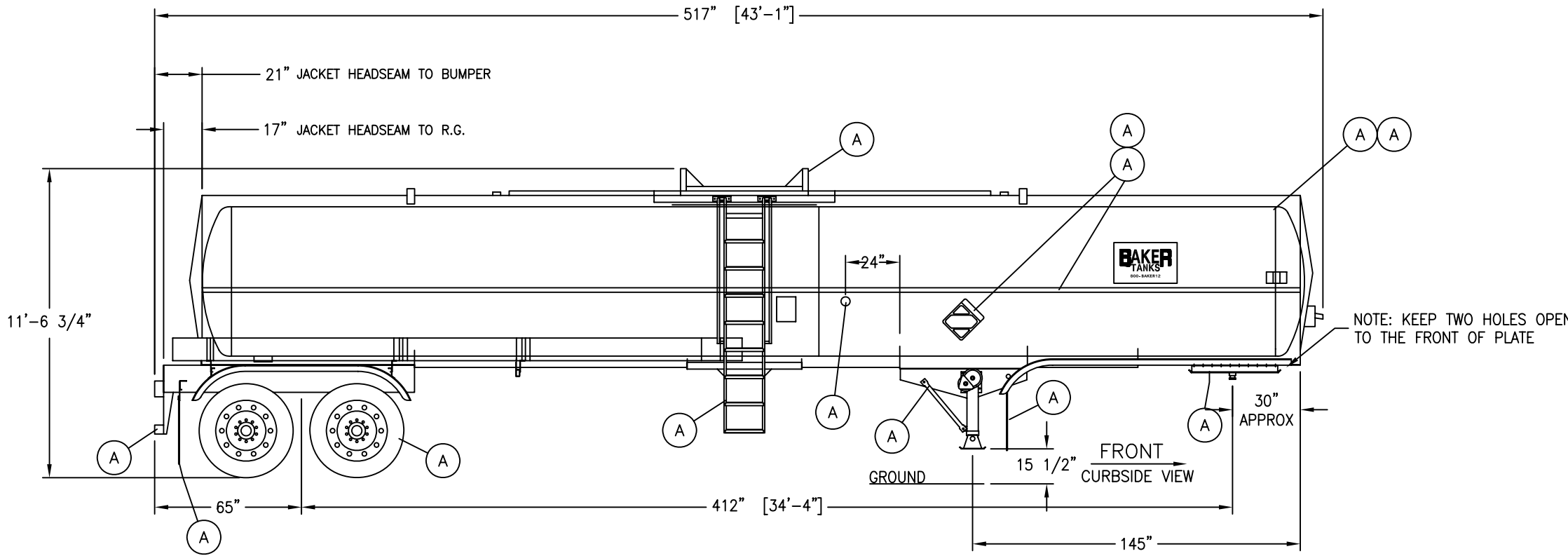
TESTS/CERTIFICATIONS

» Test Performed:	OEM hydrotest @ 40 psig, and scheduled D.O.T. V, I, P and K inspections
-------------------	---



REAR VIEW
(Not to scale)

SPECIFICATIONS
 Capacity - 7000 Gallons (nominal)
 Empty Weight: 12,900 lbs.
 MAWP: 25 PSIG
 Test Pressure 45 PSI.
 Max. Operating Temperature 300°F
 Shell Material: 316L Stainless Steel



ITEM	QTY	PART NUMBER	DESCRIPTION	MATERIAL
18	1	A-VE-D-1258	VAPOR RECOVERY ASSEMBLY	BM
17	---	N/A	PAINT: DUPONT IMRON 5000 BLACK #N0001	-----
16	---	N/A	DUPONT TUFLOCOTE PRIMER #1856S	-----
15	1	P-TH-A-202	0-300° F. CLIP-ON THERMOMETER	-----
14	1	A-IN-B-998	SPILLDAM DRAIN INSTALLATION	BM
13	4	P-MF-A-40	BRENNER MUDFLAPS	PLASTIC
12	1	A-IN-D-621	DECAL INSTALLATION	BM
11	1	A-VE-C-1257	VENTING ASSEMBLY	BM
10	1	A-NP-C-1631	SIGNPLATE MOUNTING ASSEMBLY	BM
9	1	A-L-D-3876	LADDER, WALKWAY AND HOSE TUBE ASSEMBLY	BM
8	1	S-C-27022-02	LIGHTS AND WIRING ASSEMBLY	BM
7	1	A-FE-D-3477	FENDER ASSEMBLY L=129"	BM
6	1	S-D-25022	BUMPER ASSEMBLY	BM
5	1	A-RG-X-3490	RUNNING GEAR ASSEMBLY (A-FR-C-1893)	BM
4	1	A-LG-C-1519	LANDING GEAR ASSEMBLY	BM
3	1	A-FW-B-166	U.F.W. DETAIL ASSEMBLY (A-FW-D-77)	BM
2	1	A-FA-D-3097	FRAME ASSEMBLY	BM
1	1	A-SA-D-4859	SHELL ASSEMBLY	BM

	REAR	
GROUND TO 5th WHEEL	50"	TIRE RADIUS
5th WHEEL HEIGHT	3 5/16"	SUSPENSION MT'G. HEIGHT
5th WHEEL TO SHELL	4"	RUNNING GEAR FRAME HEIGHT
SHELL THICKNESS (times 2)	1/4"	RUNNING GEAR FRAME TO SHELL
SHELL I.D.	66 1/16"	
INSULATION THICKNESS	5"	
OVERTURN HEIGHT (or highest point)	11 7/8"	
SLOPE FROM HEADSEAM TO HIGHEST PROTRUSION (L=207")	-1 3/4"	SLOPE FRONT TO REAR = .0087" /INCH
OVERALL HEIGHT	138 3/4" (11'-6 3/4")	

- NOTES**
- 20" full-opening manhole at top.
 - Full length steam heat, 304SS channels, 150 psi design working pressure, inlet & outlet at front.
 - Emergency valve: 4"x3"x90 deg. SS Betts valve
 - Vents: (1) 3" Girard pressure relief, 25 psi MAWP; and (1) 3" Girard magnetic vacuum breaker.
 - Vapor Recovery: (1) 3"x2" tee style hydraulic valve
 - Insulation: 6" fiberglass compressed to 5".

The information contained herein is proprietary to BakerCorp and shall not be reproduced or disclosed in whole or in part, or used for any design or manufacture except when user obtains direct written authorization from BakerCorp.

BAKERCORP 3020 OLD RANCH PARKWAY
SEAL BEACH, CA 90740-2751

REV.	DESCRIPTION	DATE	BY	SCALE:	SIZE	ORIGINAL DWG. DATE
G				To Scale	B	10NOV03
F						
E				DRAWN BY: P.J.B.	APPROVED BY: -	CAT/CLASS 500-10xx
D						
C				TITLE	BRENNER TANK TRAILER DOT 407	
B						SHEET 1 OF 1
A	FIXED LINEWEIGHTS	7/12/05	Z.E.R	DRAWING NO.	S-4-M0001-1-	
REV.	DESCRIPTION	DATE	BY			REV. C