

PRODUCT DATA SHEET

January, 2007

MODERN MFG. VACUUM ROLL-OFF BOX

GENERAL INFORMATION

These containers can be used to shuttle sludge or solid wastes directly to a disposal site. They are designed to keep a vacuum truck or other air mover operating full time.

WEIGHTS AND MEASURES

» Capacity:	24.9 cubic yards
» Height:	6'-4"
» Width :	8'-2"
» Length:	23'-8"
» Inside Dim.:	82½"Wx55"Hx260"L
» Weight:	11,200 lbs.

STRUCTURAL DESIGN

» Shell, Bottom Half:	¼" steel plate
» Shell, Top Half:	¼" steel plate
» Main Rails:	2"x6"x¼" rectangular tubing
» Door Sheet:	¼" steel plate

FEATURES

» Top Manway:	1 - 21" domed lid
» Side Manway:	None
» Manway Seals	Neoprene

FEATURES - cont

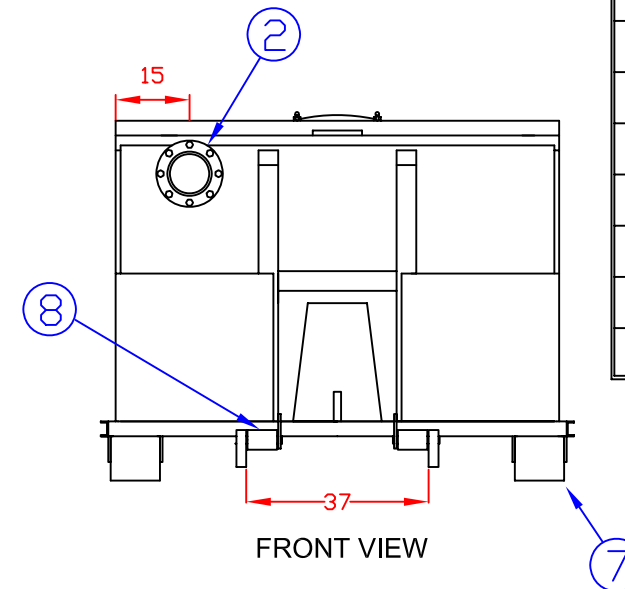
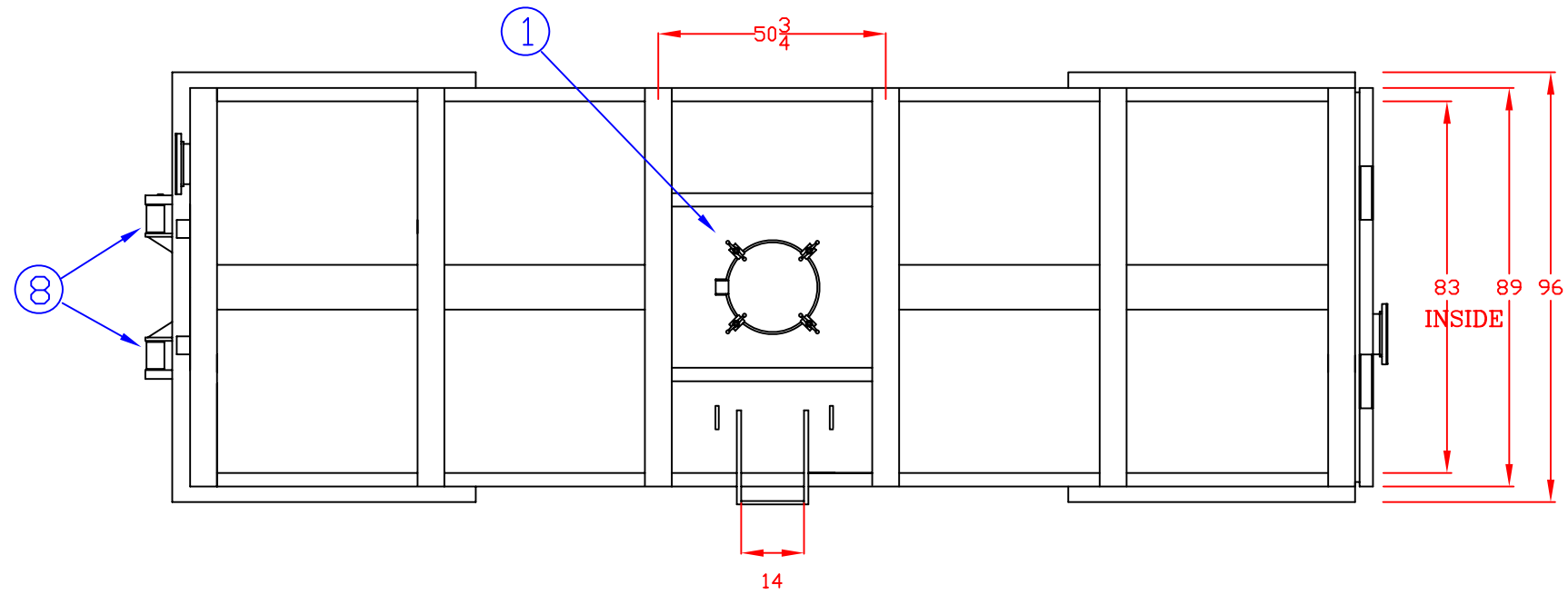
» Wheels:	4 - 10" diameter x 9" long
» Nose Rollers:	2 - 4" diameter x 6" long
» Hook Up Style:	Standard cable roll-off
» Hinges:	Plate/tube assembly w/1" diameter pin
» Locking Mechanism:	Vertical latch with four independent ratchet binder sealing system
» Ladder:	One located at center on driver side
» Ports:	2 - 8" 150 lb. pipe flange, one on front curb side and one on door driver side
» Deflectors:	One - inside at front port
» Valves:	None; 4" pipe nipple w/cap at bottom center door
» Door Gasket:	Extruded neoprene

SURFACE DETAILS

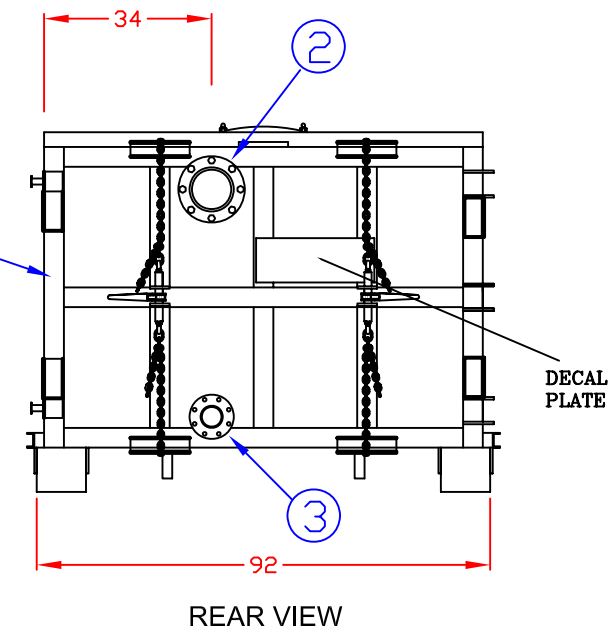
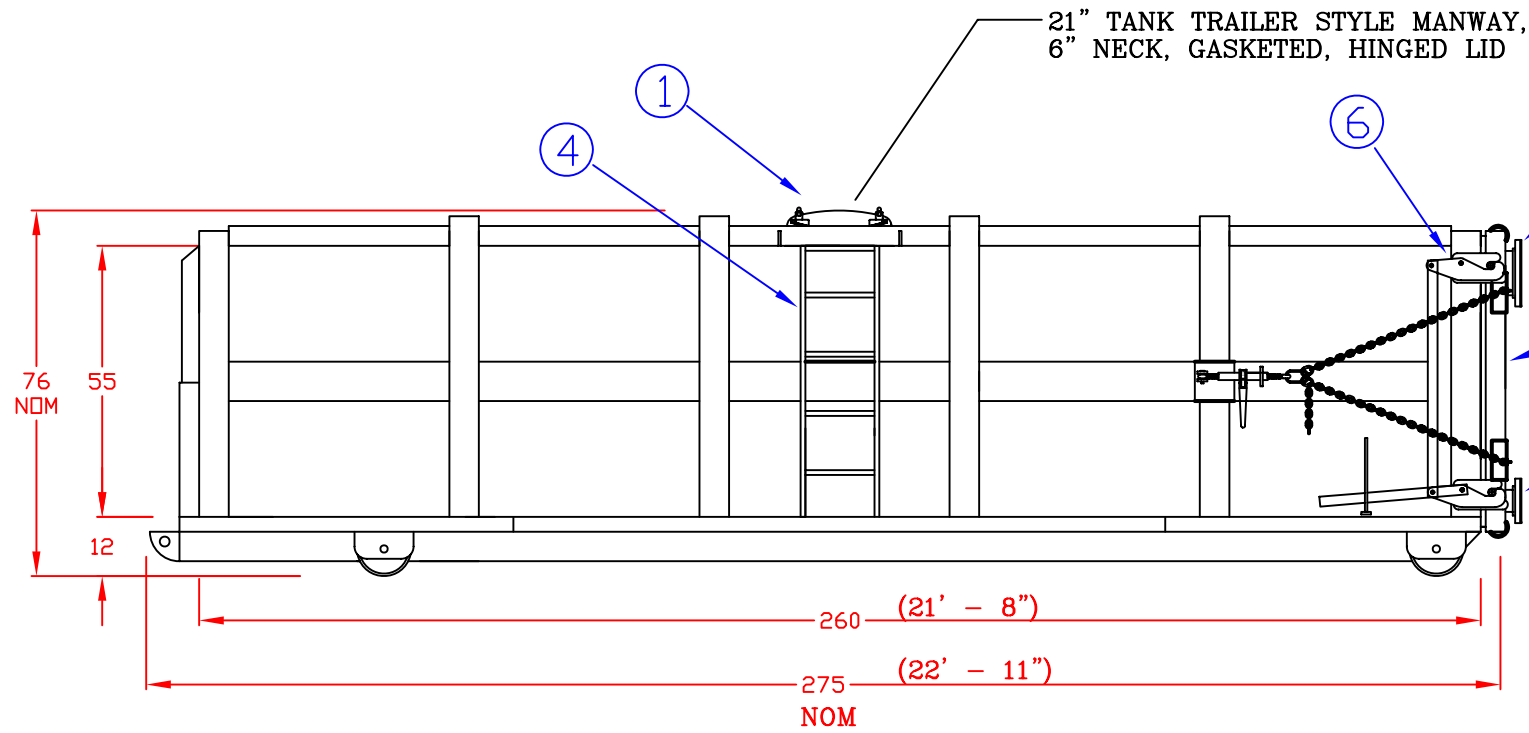
» Exterior Coating:	High Gloss Polyurethane
» Interior Lining:	PPG ALK-300, VISSTAR Acrylic Modified Alkyd Enamel, direct to metal, Warm Gray
» Placard Mounts:	Four - one on each side and each end

TESTS/CERTIFICATIONS

» Tests Performed:	Initial vacuum and hydrostatic test; scheduled OMS inspections
--------------------	--



ITEM	QTY	DESCRIPTION
1	1	21" HINGED MANWAY
2	2	8" FLANGED NOZZLE (INLET & OUTLET)
3	1	4" FLANGED DRAIN
4	1	TOP ACCESS LADDER
5	1	REAR DOOR (GASKETED)
6	1	DOOR LOCKING MECHANISM
7	4	9" DIAMETER WHEELS
8	2	NOSE ROLLERS



SPECIFICATIONS:

- 1) Container Capacity: 25 cu. yds.
- 2) Weight: 11,200 lbs. (empty)

NOTES:

1. This drawing is a baseline representation for this model of tank. Variations between this drawing and the actual equipment in the field can and do exist, primarily with appurtenance locations, sizes and quantities. Consult your local BakerCorp representative if specific needs exist.

<p>The information contained herein is proprietary to BakerCorp and shall not be reproduced or disclosed in whole or in part, or used for any design or manufacture except when user obtains direct written authorization from BakerCorp.</p>				3020 OLD RANCH PARKWAY SEAL BEACH, CA 90740-2751	
G		SCALE:	SIZE	ORIGINAL DWG. DATE	
F		Do not scale	B	02AUG02	
E		DRAWN BY:	APPROVED BY:	CAT/CLASS	
D		P.J.B.	-	--	
C		TITLE			SHEET
B		MODERN MFG. VACUUM CONTAINER			1 OF 1
A		DRAWING NO.			REV.
REV.	DESCRIPTION	DATE	BY	S-5-M0005-1-	0