

PRODUCT DATA SHEET

January, 2007

GALBREATH VACUUM ROLL-OFF BOX

GENERAL INFORMATION

These containers can be used to shuttle sludge or solid wastes directly to a disposal site. They are designed to keep a Super Sucker, Guzzler or other air mover operating full time.

WEIGHTS AND MEASURES

» Capacity:	20yd ³ & 25yd ³
» Height:	20 yd ³ : 69-3/16" 25 yd ³ : 80½"
» Width :	91¾' (both sizes)
» Length:	238 " (both sizes)
» Weight:	20 yd ³ : 9,500 lbs. 25 yd ³ : 10,100 lbs.

STRUCTURAL DESIGN

» Floor:	¼" steel plate
» Walls:	¼" steel plate
» Bottom Guide Rails:	Full length of box, standard width
» Door Sheet:	¼" steel plate
» Bulkhead:	¼" steel plate

FEATURES

» Wheels:	Two each, front and rear
» Nose Rollers:	Two on front of box
» Top Manway:	1-24" diameter, centered on top of box

FEATURES - cont

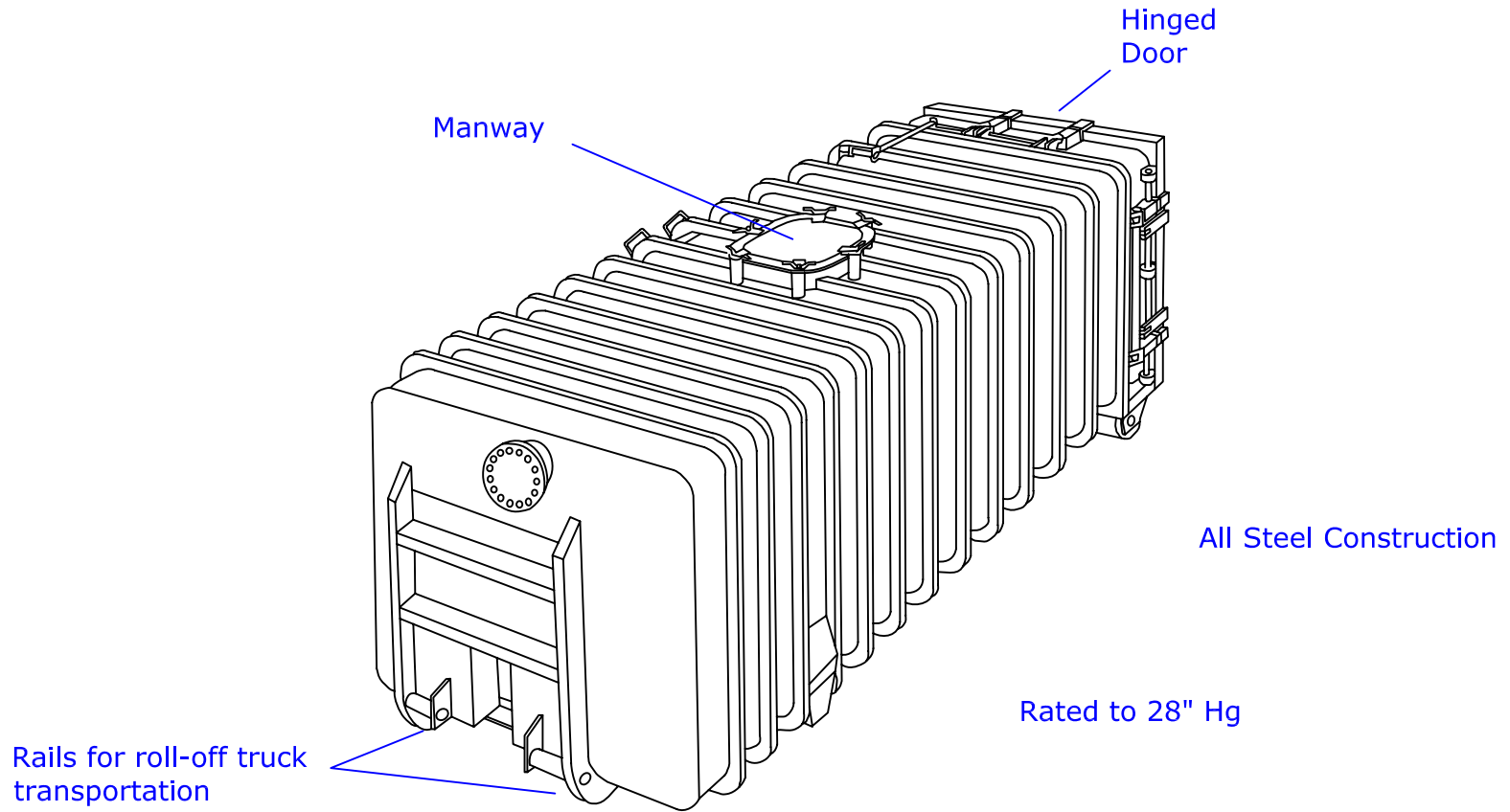
» Hook Up Style:	J-hook on front of box
» Hinges:	Three top hinges
» Locking Mechanism:	Semi-automatic cam locking system, 1¼" "Posi-Lock" cams and ½" "Posi-Lock" keepers on door.
» Manifest Box:	One, front end, driver's side
» Ladder:	One on curb side
» Inlet Ports:	Container Ends: 8" flanged, one each end centered top Container Top: one 8" flanged port, bulkhead end, driver's side
» Deflectors:	(2)- interior plates
» Rear Drain:	4" NPT nipple with cap at center bottom of door

SURFACE DETAILS

» Exterior Coating:	High Gloss Polyurethane
» Interior Lining:	None
» Placard Mounts:	Four, one on each side


TESTS/CERTIFICATIONS

» Tests Performed:	Water tested and vacuum tested at manufacturer; Level I, II and III inspections on scheduled basis
--------------------	--



NOTES:

1. This drawing is a general representation for this class of equipment. Refer to the Product Data Sheet for more detailed information.

The information contained herein is proprietary to BakerCorp and shall not be reproduced or disclosed in whole or in part, or used for any design or manufacture except when user obtains direct written authorization from BakerCorp.				 3020 OLD RANCH PARKWAY SEAL BEACH, CA 90740-2751		
G				SCALE: N.T.S.	SIZE: A	ORIGINAL DWG. DATE: 24JAN06
F				DRAWN BY: P.J.B.	APPROVED BY: -	CAT/CLASS: NA
E				TITLE: GALBREATH VACUUM ROLLOFF		SHEET: 1 OF 1
D				DRAWING NO. S-5-M0014-1-		REV. 0
C						
B						
A						
REV.	DESCRIPTION	DATE	BY			