

## PRODUCT DATA SHEET

January, 2007

## YARDNEY 4-POD SAND FILTER (Equip. # SFL21988 and earlier)

### GENERAL INFORMATION

Skid mounted high rate automatic backwashing sand media filter (4 tanks (pods)) designed for general-purpose water filtration of organic and inorganic solids (Yardney Model # IL5424-4AS2). Powered by 110 V external power supply, or battery with solar cell recharge for remote operation.

### WEIGHTS AND MEASURES

» Capacity:	.....	504 – 756 gpm (Normal flow range) 1000 gpm (Peak flow)
» Design Press:	.....	80 psi maximum
» Temperature:	.....	Limit to ambient. Consult BakerCorp if temperature exceeds 100 degrees.
» Filtration:	.....	To 50 microns
» Height:	.....	8'-11" (overall)
» Width :	.....	6'-3"
» Length:	.....	20'-1"
» Weight:	.....	6,326 lbs. – equipment only 14,500 lbs. – media only 28,000 lbs. - operational
» Backflush:	.....	240 gpm, automatic

### OPERATING REQUIREMENTS

» Compressed Air:	.....	5 cfm minimum at 60 psi [Note: external air supply required]
» Sand Media:	.....	Crushed silica, 0.47MM (#80 grit)
» Gravel Media:	.....	#3 crushed rock, ½" x ¾"
» Input Power:	.....	Selectable input power of customer supplied 110 V AC, or 12V DC from a unit mounted solar package.
» Output Power:	.....	12V DC

### FEATURES

» System Controller:	.....	Automatic Filter Controller. Flush activation based on elapsed time and/or pressure differential.
» Piping:	.....	Inlet & outlet pipe is 6" A53B, 3/16" wall; weld fittings are A234; flanges are A106. Backflush piping is 4" schedule 40 PVC.
» Solar Panel:	.....	Uni-Solar Model UA-5 (5 watts) module.

### FEATURES – con't

» Press. Gauge:	.....	2" face, ¼" NPT bottom connection, stainless steel case, plexiglass lens, brass bourdon tube, 0-100 psi range.
» Flowmeter:	.....	Six-inch propeller type meter, AWWA C704-92 compliant. Instantaneous flowrate indicator and six-digit totalizer. Accuracy is ±2% of reading. Repeatability of 0.25%. Rated at 90-1200 gpm, 150 psi, 160°F. Tube: epoxy-coated carbon steel; Impeller: high-impact plastic.
» Butterfly Valves:	.....	<u>Effluent / Influent:</u> 6" with cast iron body (epoxy coated), EPDM seat, 304 SS stem and aluminum bronze disc. <u>Tank Isolation:</u> 4" grooved ends, EPDM disc coating
» Ball Valves:	.....	Four-inch, bronze body and brass ball; seat is carbon/glass-filled PTFE. ¼ turn open or close.
» Solenoid Valve:	.....	12V DC, normally closed type 7121V (energizing opens valve).
» Differential Press. Switch:	.....	0-30 psid. Two-inch dial, plated steel case, ±3% accuracy.
» Air / Vacuum Release Valve:	.....	2" Bernard Model 4415 valve, mounted on backwash, influent and effluent lines
» Battery:	.....	Sealed rechargeable lead-acid, 12V, NP2.6-12
» Battery Charger:	.....	Power-Sonic Model PSC-12500A, 12 volts.
» Tubing:	.....	Pressurized – ¼" 304 ss w/ Hoke fittings; Drain - ¼" polypropylene; Vent – schedule 80 PVC

### SURFACE DETAILS

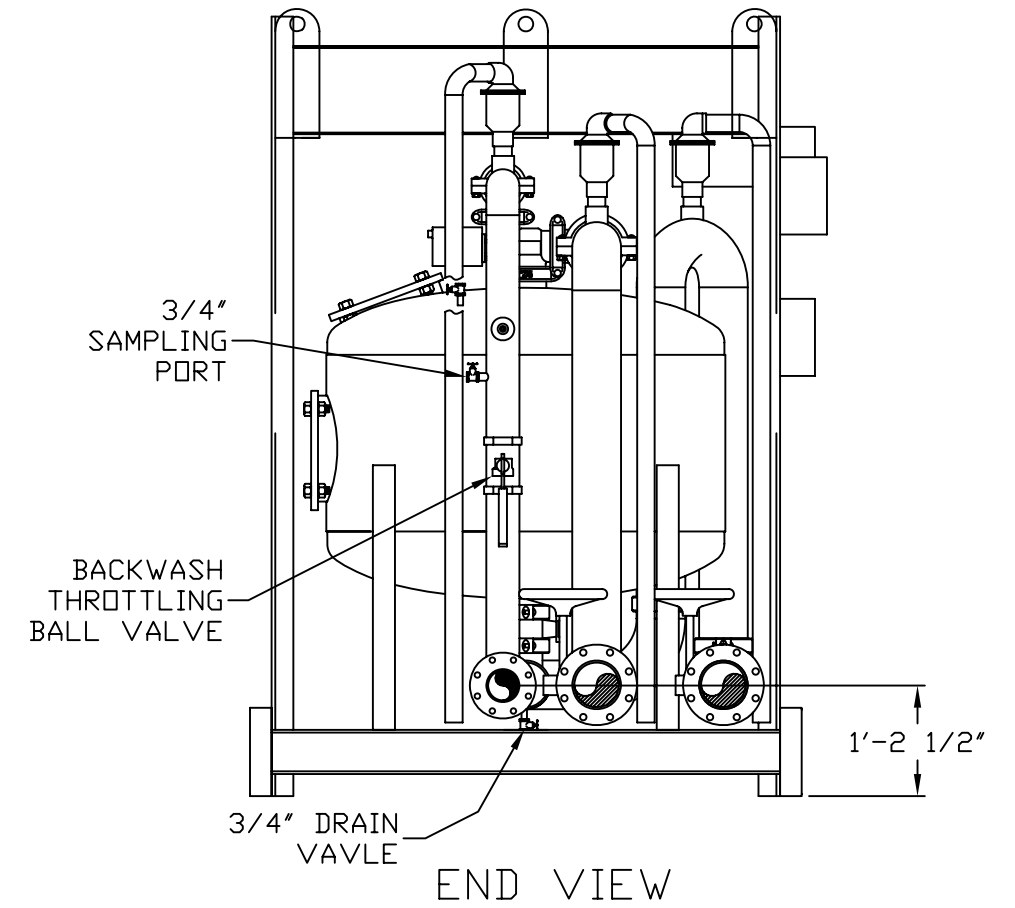
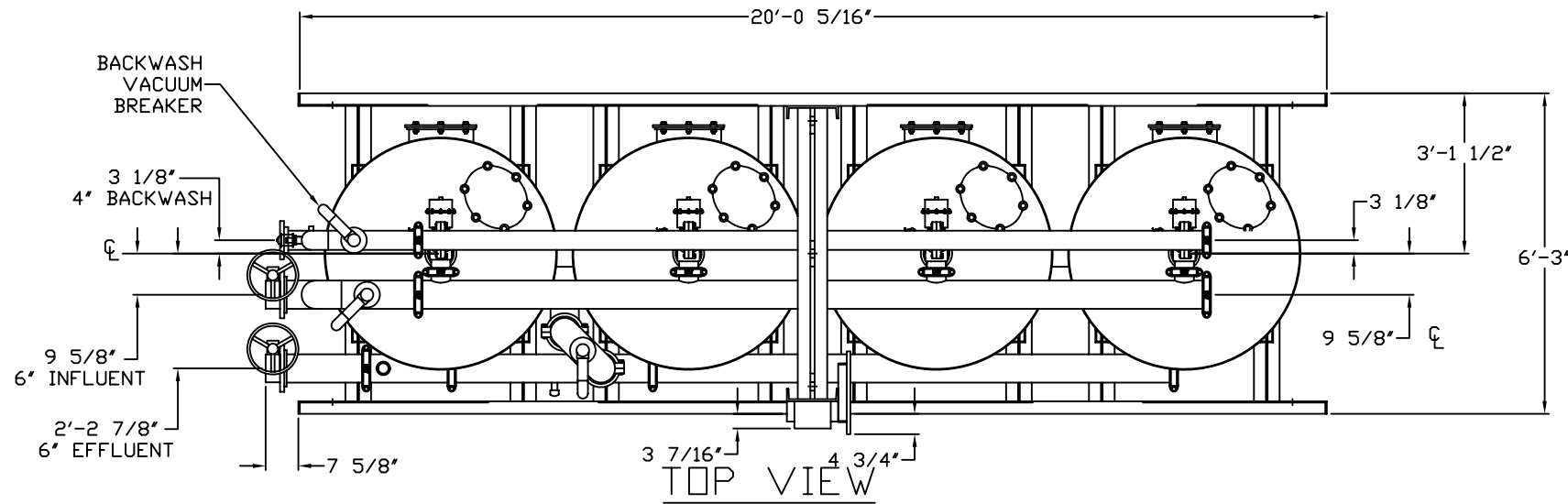
» Interior Coating:	.....	3M Scotchkote 134
» Exterior Coating:	.....	High Gloss Polyurethane

### TESTS/CERTIFICATIONS

» Tests Performed:	.....	OEM pressure tested. BakerCorp performs scheduled QMS inspections.
--------------------	-------	--

**NOTES:**

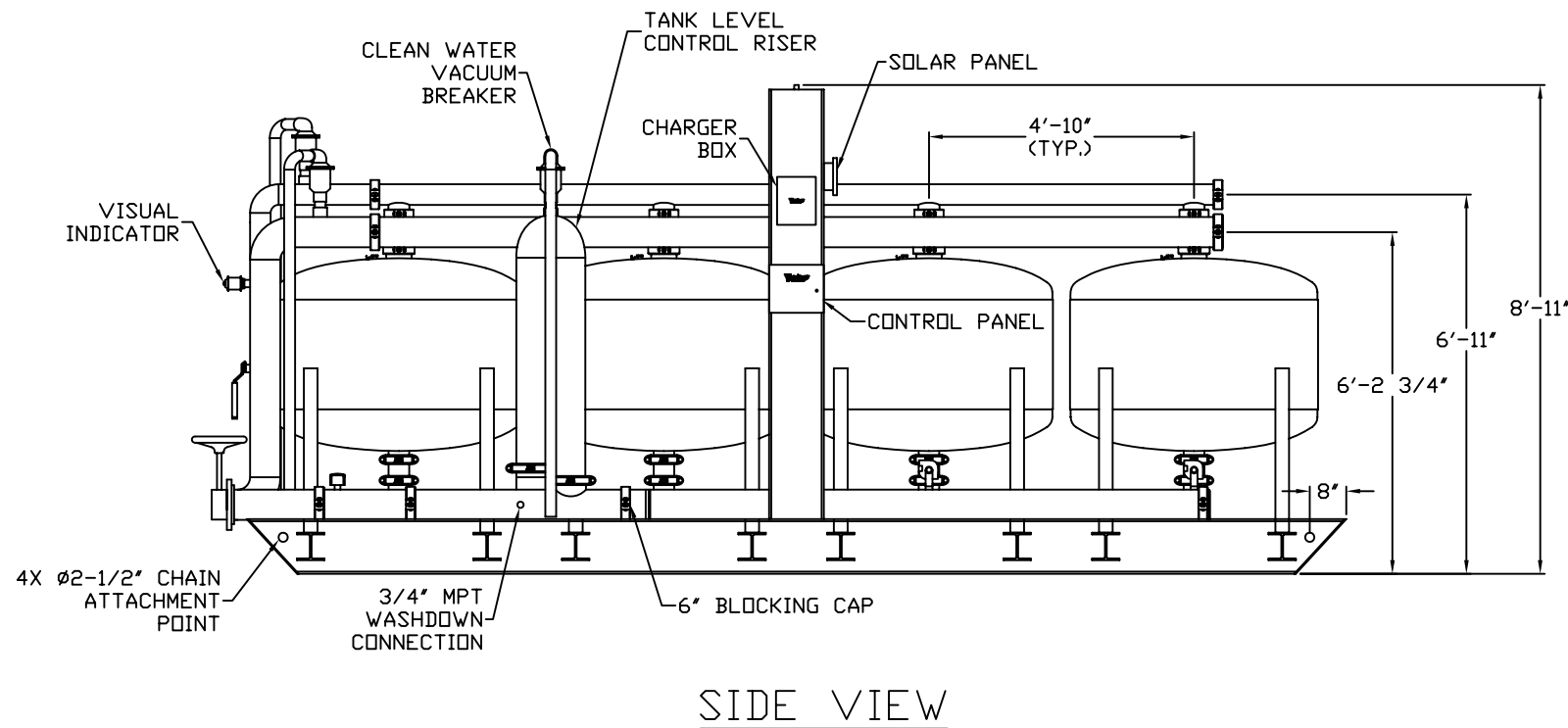
1. This drawing is a baseline representation for this size skid. Variations between this drawing and the actual equipment in the field may exist, primarily with appurtenance locations. Consult your local BakerCorp representative if specific needs exist.



MODEL IL54244AS2 <sup>B</sup>

NOTES:

1. FLOW RATE DESIGN - 1000 GPM
2. MAXIMUM WORKING PRESSURE - 80 PSI
3. ELECTRICAL:
  - CONTROLLER 120V / SOLAR
4. WEIGHT (APPROX.):
  - A. EQUIPMENT - 6,326 LBS.
  - B. MEDIA - 14,500 LBS.
  - C. OPERATION - 28,000 LBS.
  - D. DRAINED & WET - 23,800 LBS.
5. BACKWASH RATE: 15 GPM/FT<sup>2</sup> - 240 GPM.
6. SOLAR PACKAGE.
7. HYDRAULICALLY ACTIVATED VALVES. W/ SS TUBE
8. STEEL CONDUIT
9. TUBE TANK VENT VALVES TO GROUND



The information contained herein is proprietary to BakerCorp and shall not be reproduced or disclosed in whole or in part, or used for any design or manufacture except when user obtains direct written authorization from BakerCorp.				<b>BAKERCORP</b> 3020 OLD RANCH PARKWAY SEAL BEACH, CA 90740-2751		
G				SCALE:	SIZE	ORIGINAL DWG. DATE
F				Do Not Scale	B	06SEP02
E				DRAWN BY:	APPROVED BY:	CAT/CLASS
D				P.J.B.	-	--
C				TITLE	YARDNEY 4-POD SAND FILTER	
B	Changed drawing title and model number	4/17/05	PJB	(Equipment No. SFL21988 and lower)		SHEET 1 OF 1
A	Added note	6/13/03	PJB	DRAWING NO.	REV.	
REV.	DESCRIPTION	DATE	BY	<b>S-9-M0005-1-</b>		<b>B</b>