

PRODUCT DATA SHEET

9/4/2012

BP84HN-CD1540T

BakerPrime 8x4 High Pressure Non-Solids Handling Unit (Open, Trailer)

GENERAL INFORMATION

The compressor/venturi priming system uses a compressor to blow compressed air through a jet into a tapered tube to create a vacuum on the suction.

PERFORMANCE DATA

» Flow (min/max):	-	330 gpm / 1300 gpm
» Minimum Shutoff Head:	-	165 feet (71 psi) @ 1300 rpm (1)
» Maximum Shutoff Head:	-	390 feet (169 psi) @ 2000 rpm (1)
» Minimum Speed:	-	1300 rpm
» Maximum Speed:	-	2000 rpm
» Maximum Suction Lift:	-	25 feet (2)
» Maximum Casing Press:	-	175 psi
» Maximum Temperature:	-	190°F (7)
» Maximum Solids Size:	-	0.62" spherical diameter

PUMP SPECIFICATIONS

» Impeller:	-	16.44"
» Bearing Lubrication:	-	Grease
» Vacuum System:	-	34 cfm Compressor/Venturi
» Mechanical Seal Lube:	-	SAE No. 30 Oil (3)

PHYSICAL SPECIFICATIONS

» Suction Size:	-	8" flange
» Discharge Size:	-	4" flange
» Approximate Weight:	-	6627 lbs dry / 7550 lbs wet
» Overall Height:	-	100" (to top of lifting eye)
» Overall Width:	-	69" (outer most edges)
» Overall Length:	-	175" (nose to tail)

MATERIAL SPECIFICATIONS

» Pump Casing:	-	Cast Iron
» Shaft Sleeve:	-	Heat Treated 416 SS
» Wear Rings:	-	Cast Iron
» Mechanical Seal Faces:	-	Tungsten/Silicon-Carbide
» Pump Shaft:	-	1144 SAE Stressproof
» O-rings:	-	Viton
» Impeller:	-	Cast Iron
» Check Valve Body:	-	Ductile Iron
» Check Valve Flapper:	-	Buna-N

ENGINE SPECIFICATIONS

» Engine Make/Model:	-	Deere 4045H
» Total Displacement:	-	4.5 Liter
» Aspiration:	-	Turbocharged
» Max. Continuous BHP:	-	154 @ 2400 rpm (4)
» Crankcase Oil:	-	SAE 10W40 (5)
» Coolant:	-	50/50 Water/Antifreeze
» Safety Shutdowns:	-	High Water Temp & Low Oil Pressure
» Fuel Consumption:	-	5.5 gal/hr @ 1800 rpm (6)
» Run Time:	-	24 hours at 1800 rpm at 80% Engine Load
» Fuel Capacity/Type:	-	130 gal of No. 2 diesel
» Number of Cylinders:	-	Four

Notes:

- (1) Based on 1.0 specific gravity
- (2) Depends on flow rate, pump speed, and elevation. See performance curve.
- (3) Should always be visible and clear in appearance thru sight glass.
- (4) WARNING – this is the rated speed for the ENGINE ONLY. The rated speed of the pump is less. See curve for max pump RPM.
- (5) Must be changed every 250 hours of runtime.
- (6) Run time fluctuates with speed and engine loads.
- (7) Equipment material limitation. Lower max temperature may be necessary due to application conditions and pump NPSH requirements.

BakerCorp Reference # 406-0201

To the best of our knowledge the technical data contained herein are true and accurate at the date of issuance and are subject to change without prior notice. No guarantee of accuracy is given or implied because variations can and do exist.

NO WARRANTY OR GUARANTEE OF ANY KIND IS MADE BY BAKERCORP, EITHER EXPRESSED OR IMPLIED.

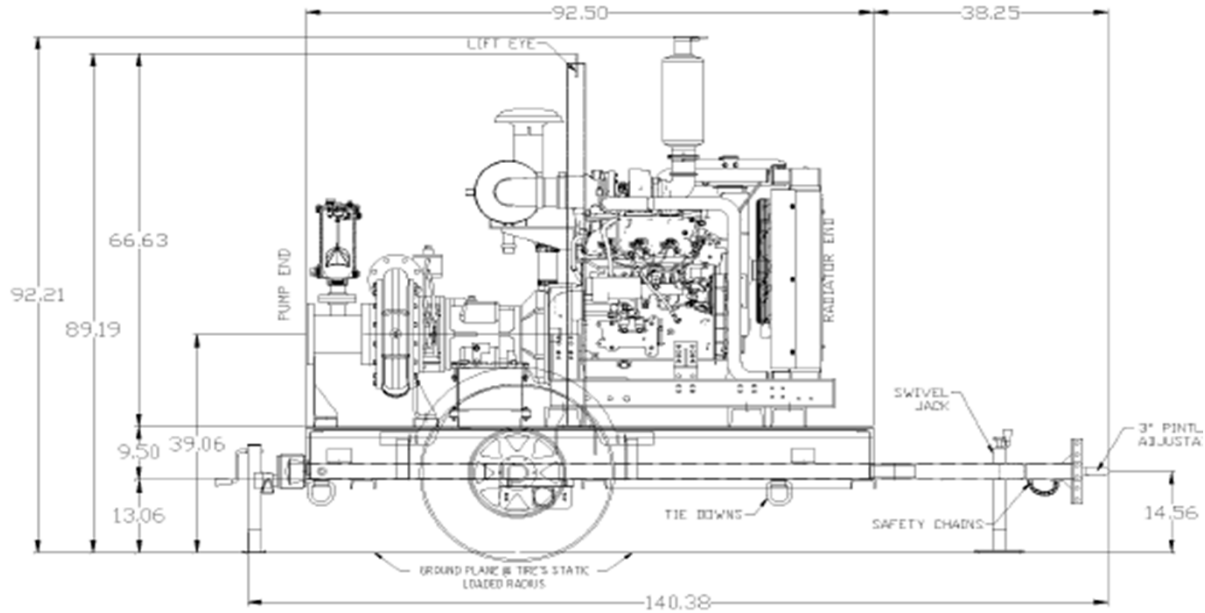
PRODUCT DATA SHEET

9/4/2012

BP84HN-CD1540T

BakerPrime 8x4 High Pressure Non-Solids Handling Unit (Open, Trailer)

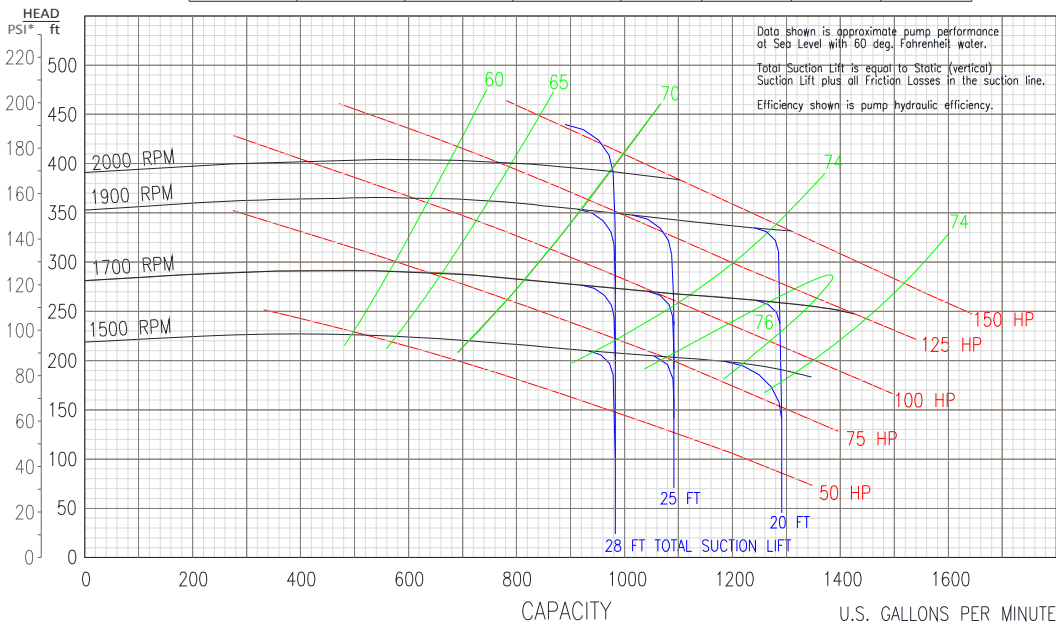
PHYSICAL SPECIFICATIONS



PERFORMANCE CURVE

BP84HN-CD1540T

Speed	Impeller Dia.	Style	Solids Dia.	N _s	Suction	Discharge	No. vanes
VARIOUS	16.44"	ENCLOSED	.62"	960	8"	4"	5



Performances shown are for cool water, frame mounted configuration with Cyclo Seal.® Other liquids or mounting configurations may require performance adjustments.

Performance curve does not include discharge check valve losses.

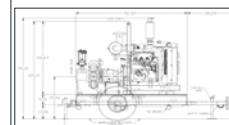
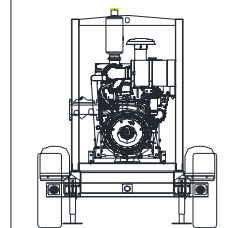
NOTE: CURVES BASED ON 1.0 SPECIFIC GRAVITY

Pump

MAKE: BAKERPRIME
MODEL: BP84HN
CURVE No: BP84HN-1
SUCTION: 8 INCH
DISCHARGE: 4 INCH
MAX SOLID: 0.62 INCH
IMP. DIA: 16.44 INCH
MAX SPEED: 2000 RPM
MIN SPEED: 1300 RPM

Engine

MAKE: John Deere
MODEL: 4045H
RATING: 154 HP @ 2400 RPM



3001 OLD BRANCH PARKWAY
SEAL BEACH, CA 90732-0201